

LINIO NEON 1010 3D Outdoor · Dual Bending · Static White

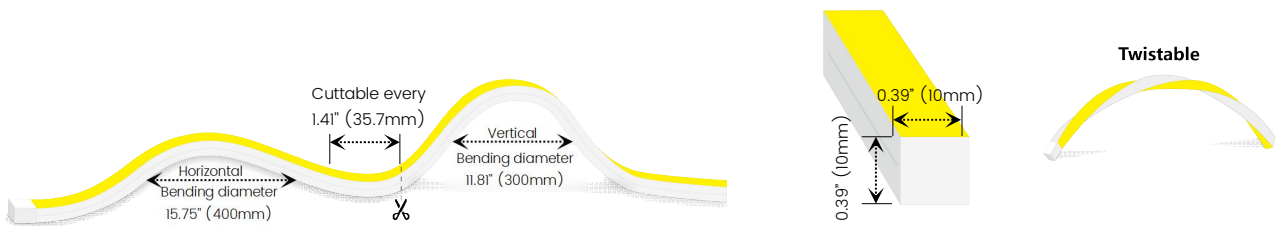
Features

- Dual bending design for curve installations
- Field cuttable & joinable
- Low voltage DC24V
- 200 lumen outputs
- IP67 rated, ideal for indoor and outdoor uses
- 5 years warranty



Date	Fixture type
Project name	Project phase

Dimension



Order Code

Series	Environment		Voltage		Temp./Color		Power		
LN10103D	W7	Wet (IP67)	24	DC24V	27	2700K	305	3.05W/ft	-200 lm/ft
					30	3000K			
					35	3500K			
					40	4000K			
					55	5500K			

Assembly Builder

End Cap ¹		Left Feed Entry		Right Feed Entry		Illuminated Length ²	
IJ	Injected (IP67)	F Front	OW Open wire 3.28'	F Front	OW Open wire 3.28'	Max	16.4' -3.05W
IJC	Clear injected (IP67)	B Bottom	MC Male connector with 0.98' cable	B Bottom	MC Male connector with 0.98' cable	Increment	1.41'
SEC	Silicone (IP67)	S Side	FC Female connector with 0.98' cable	S Side	FC Female connector with 0.98' cable		
		C Closed	NA Only for Closed Feed Entry	C Closed	NA Only for Closed Feed Entry		

1. Injected and clear injected end cap are factory-made only.

2. Production length = Illuminated length + End cap extension length (refer to below page for extension length of each end cap)

Temp./Color	3.05W/ft
2700K	202
3000K	218
3500K	224
4000K	208
5500K	218
Max. Run for Class 2 Low Voltage (ft)	16.4
Max. Run Length (ft)	16.4
Storage Temperature	-13-140°F
Ambient Temperature	-13-113°F

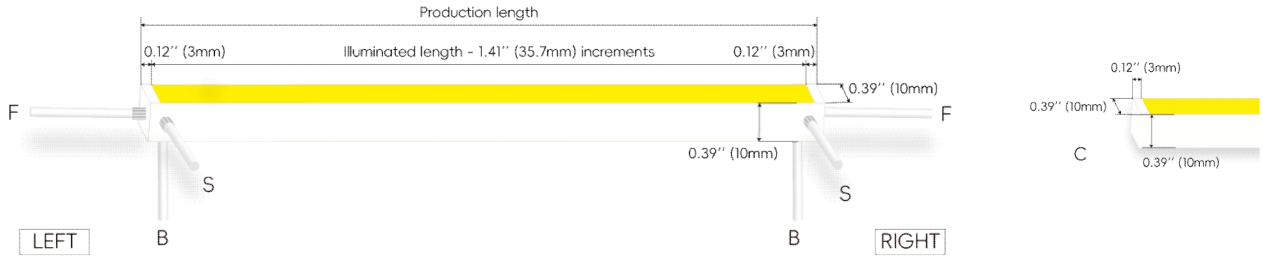
Technical Details

Efficacy	68.2lm/W @4000K 3.05W
CRI	Ra ≥ 90
Beam Angle	120°
LED MacAdam	3 steps
Life (L70)	> 102,000 hours
Max. Length Per Reel	32.8' (10M)
Finish	Matte

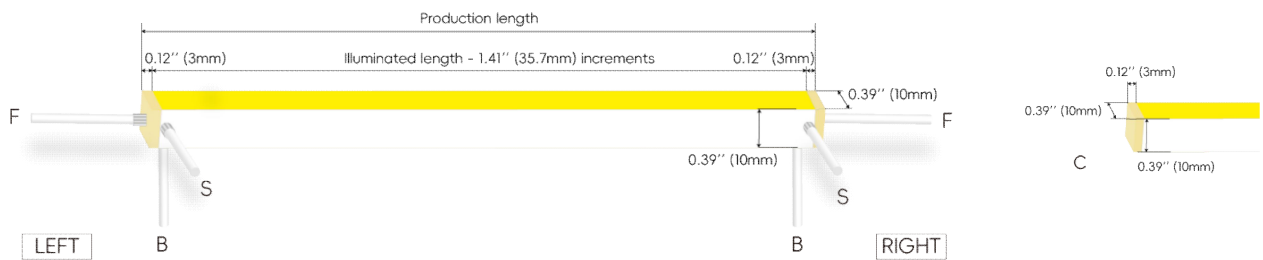
LINIO NEON 1010 3D Outdoor · Dual Bending · Static White

Feed Entry / End Cap Options

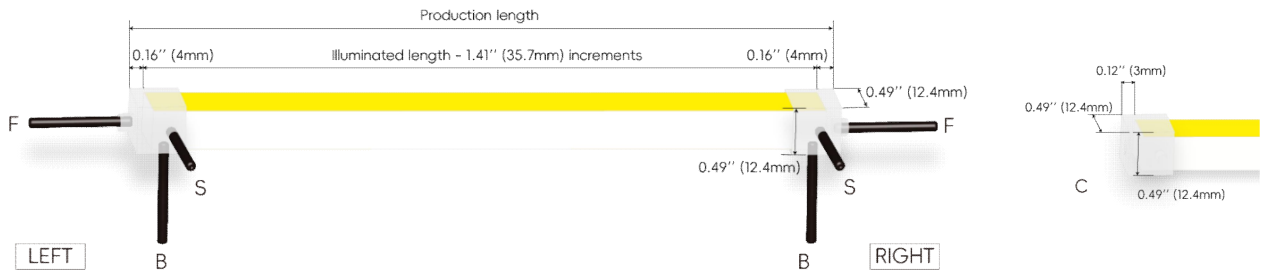
IJ: Injected end cap – IP67, factory-made only



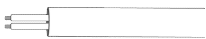
IJC: Clear injected end cap – IP67, factory-made only



SEC: Silicone end cap – IP67



Connector Wire Options



OW: Open wire, **Dry only**
Standard 3.28' (1m), 20 AWG (wire length customizable)



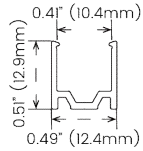
MC: Male connector, **Wet**
Standard 0.98' (30cm), 20 AWG



FC: Female connector, **Wet**
Standard 0.98' (30cm), 20 AWG

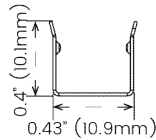
LINIO NEON 1010 3D Outdoor · Dual Bending · Static White

Mounting Options



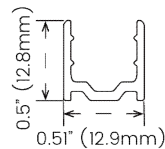
LN1010-SC

Name	Straight surface channel
Material	Aluminum
Standard Length	3.28' (1M)



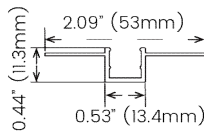
LN1010-BC

Name	Bendable surface channel
Material	Stainless Steel
Standard Length	3.28' (1M)



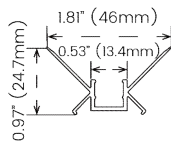
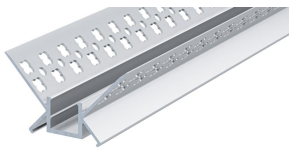
LN1010-PC

Name	PC channel
Material	PC
Standard Length	3.28' (1M)



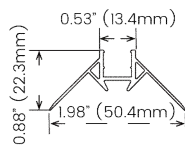
LN1010-MC

Name	Mud-in channel
Material	Aluminum
Standard Length	3.28' (1M)



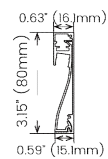
LN1010-IC

Name	Inside corner channel
Material	Aluminum
Standard Length	3.28' (1M)



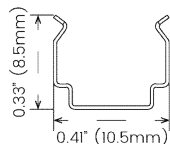
LN1010-OC

Name	Outside corner channel
Material	Aluminum
Standard Length	3.28' (1M)



LN1010-SBC

Name	Skirting board channel
Material	Aluminum
Standard Length	3.28' (1M)



LN1010-CL

Name	Mounting clip
Material	Stainless Steel
Standard Length	0.28' (7MM)

LINIO NEON 1010 3D Outdoor · Dual Bending · Static White

Drivers

Non-dimmable

Code	Max Load	Input	Output	Dimmable	Class 2	Environment	Size (L*W*H)
KV-24030-ASW	30W	100-277VAC	24V	No	Yes	Dry/Damp	6.10" *2.12" *0.78"
KV-24060-ASW	60W	100-277VAC	24V	No	Yes	Dry/Damp	7.00" *2.40" *0.94"
KV-24096-ASW	96W	100-277VAC	24V	No	Yes	Dry/Damp/Wet	9.05" *2.75" *1.69"
KV-24150-ASW	150W	100-277VAC	24V	No	No	Dry/Damp/Wet	10.07" *3.07" *1.85"
KV-24200-ASW	200W	100-277VAC	24V	No	No	Dry/Damp/Wet	10.07" *3.07" *1.85"
KV-24300-ASW	300W	100-277VAC	24V	No	No	Dry/Damp/Wet	10.86" *3.07" *1.85"

Phase cut/Triac-dimmable

Code	Max Load	Input	Output	Dimmable	Class 2	Environment	Size (L*W*H)
KVF-24030-TDW	30W	100-277VAC	24V	Yes	Yes	Dry/Damp	6.10" *2.12" *0.78"
KVF-24060-TDW	60W	100-277VAC	24V	Yes	Yes	Dry/Damp	7.00" *2.40" *0.94"
KVF-24096-TDW	96W	100-277VAC	24V	Yes	Yes	Dry/Damp/Wet	9.05" *2.75" *1.69"
KVF-24150-TDW	150W	100-277VAC	24V	Yes	No	Dry/Damp/Wet	10.00" *3.07" *1.85"
KVF-24200-TDW	200W	100-277VAC	24V	Yes	No	Dry/Damp/Wet	10.00" *3.07" *1.85"
KVF-24300-TDW	300W	100-277VAC	24V	Yes	No	Dry/Damp/Wet	10.87" *3.07" *1.85"

4 in 1-dimmable (0-10V/1-10V/Potentiometer/10V PWM)

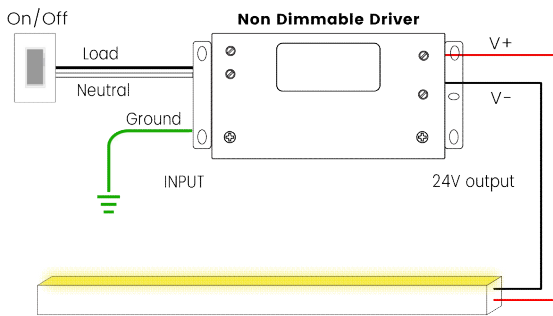
Code	Max Load	Input	Output	Dimmable	Class 2	Environment	Size (L*W*H)
KVD-24030-DIM	30W	100-277VAC	24V	Yes	Yes	Dry/Damp	6.10" *2.12" *0.78"
KVD-24060-DIM	60W	100-277VAC	24V	Yes	Yes	Dry/Damp	7.01" *2.40" *0.94"
KVD-24096-DIM	96W	100-277VAC	24V	Yes	Yes	Dry/Damp/Wet	9.05" *2.75" *1.69"
KVD-24150-DIM	150W	100-277VAC	24V	Yes	No	Dry/Damp/Wet	10.08" *3.07" *1.85"
KVD-24200-DIM	200W	100-277VAC	24V	Yes	No	Dry/Damp/Wet	13.38" *1.02" *7.28"
KVD-24300-DIM	300W	100-277VAC	24V	Yes	No	Dry/Damp/Wet	10.87" *3.07" *1.89"

5 in 1-dimmable (Triac/0-10V/1-10V/Potentiometer/10V PWM)

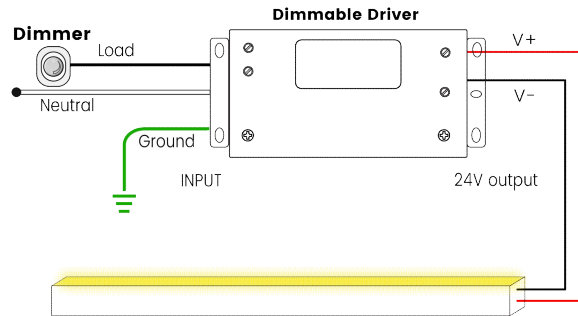
Code	Max Load	Input	Output	Dimmable	Class 2	Environment	Size (L*W*H)
KVG-24030-DW	30W	100-277VAC	24V	Yes	Yes	Dry/Damp	6.10" *2.13" *0.79"
KVG-24060-DW	60W	100-277VAC	24V	Yes	Yes	Dry/Damp	7.01" *2.41" *0.94"
KVG-24096-DW	96W	100-277VAC	24V	Yes	Yes	Dry/Damp/Wet	9.06" *2.76" *1.69"
KVG-24150-DW	150W	100-277VAC	24V	Yes	No	Dry/Damp/Wet	10.08" *3.07" *1.85"
KVG-24200-DW	200W	100-277VAC	24V	Yes	No	Dry/Damp/Wet	10.08" *3.07" *1.85"
KVG-24300-DW	300W	100-277VAC	24V	Yes	No	Dry/Damp/Wet	10.87" *3.07" *1.89"

Wiring Diagram

Non-dimmable

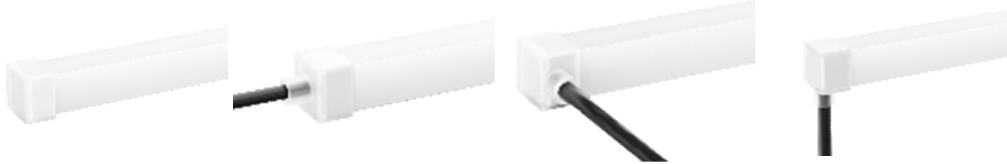


Triac-Dimmable



LINIO NEON 1010 3D Outdoor · Dual Bending · Static White

Connectors (Optional, purchase for extra)



LN1010-SEC-C
Silicone closed end cap

LN1010-SEC-F-2P
Silicone end cap front entry with 0.98' (30cm) cable, 2 pin

LN1010-SEC-S-2P
Silicone end cap side entry with 0.98' (30cm) cable, 2 pin

LN1010-SEC-B-2P
Silicone end cap bottom entry with 0.98' (30cm) cable, 2 pin

Additional Accessories (Optional, purchase for extra)



MCW-2P-67
Male connector with 0.98' (30cm) white cable, 2 pin, IP67, Wet, 20 AWG

FCW-2P-67
Female connector with 0.98' (30cm) white cable, 2 pin, IP67, Wet, 20 AWG

MCB-2P-67
Male connector with 0.98' (30cm) black cable, 2 pin, IP67, Wet, 20 AWG

FCB-2P-67
Female connector with 0.98' (30cm) black cable, 2 pin, IP67, Wet, 20 AWG