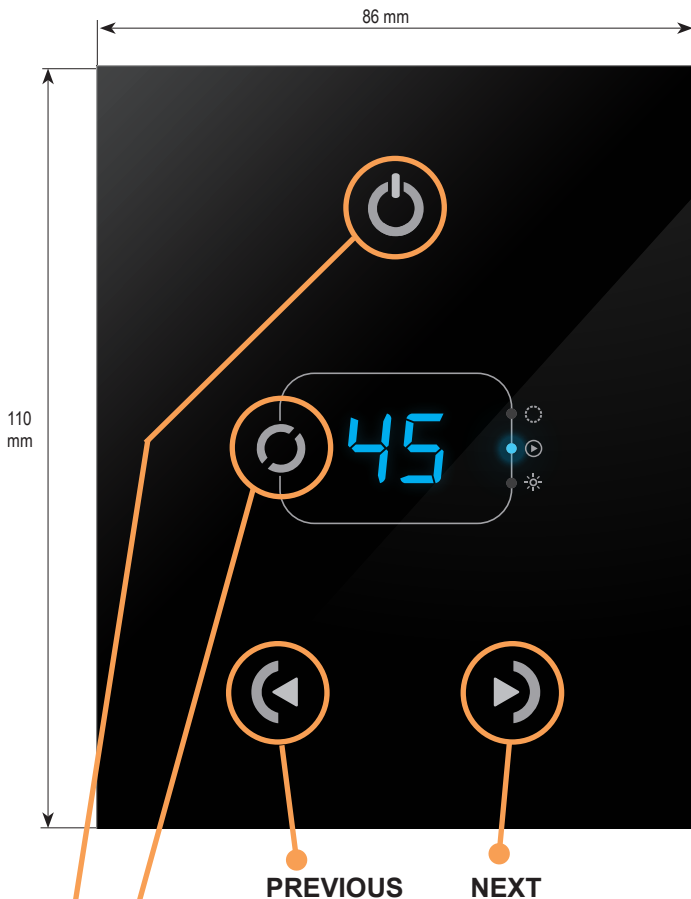
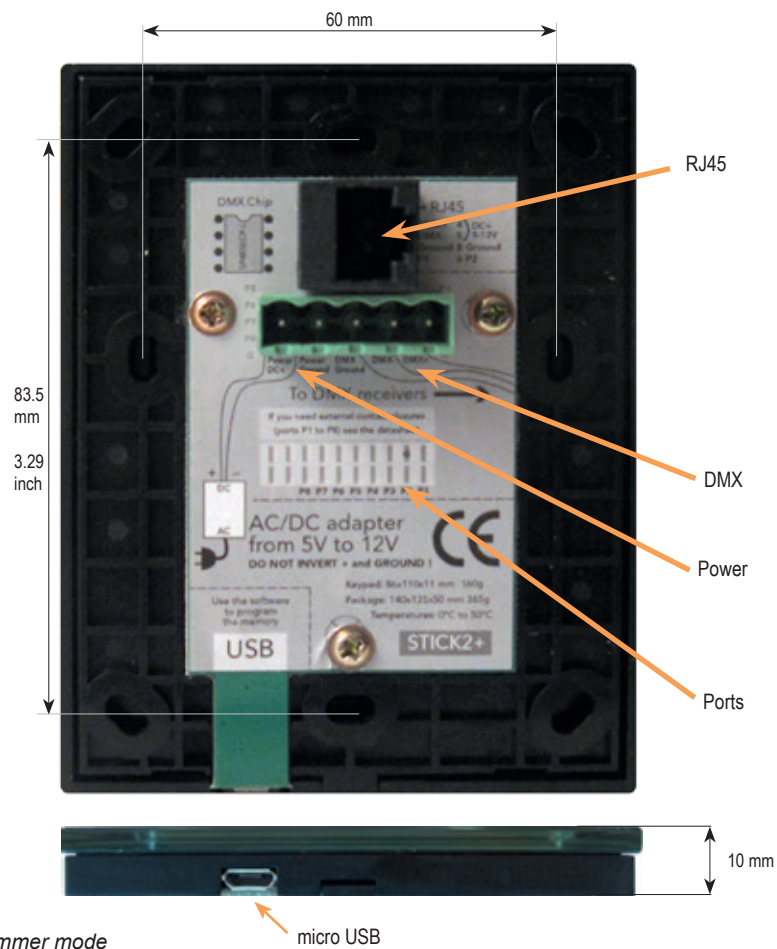


- DMX Stand Alone Controller (512 channels) with a glass face
- 4 touch sensitive buttons (on/off, mode, previous, next)
- Up to 99 dynamic or static scenes
- Live setting of the intensity and color of a scene
- Programmable through the included USB cable and control software
- Compatible with any DMX fixture or DMX LED driver
- Ready to use (pre-loaded with 8 scenes and 170 RGB fixtures)
- Latest ARM CPU technology
- Customized design for OEM, wall mountable
- 8 dry contact trigger ports on PCB and 2 on RJ45



**CHANGE MODE** : Switch between color, scene and dimmer mode  
**ON/OFF** : Short touch - Easily switch on and off

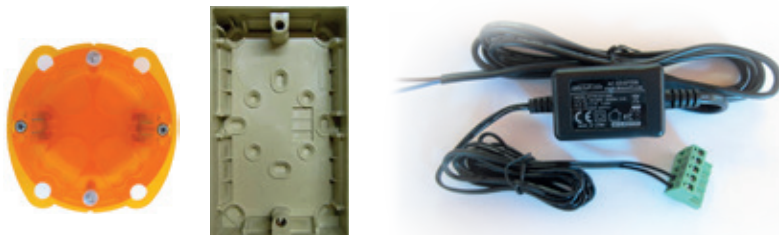


SPECIFICATIONS	
<b>Package</b>	Controller, cdrom, usb cable, connector block
<b>OS Requirement</b>	Mac OSx 10.6/10.7/10.8 - Windows XP/VISTA/SEVEN/8 32/64 bits and USB 2.0
<b>Software</b>	ESA2 (PC & Mac)
<b>Versions</b>	Black glass design, White glass design
<b>Connections</b>	Power (2pins) DMX (3pins) Port (2 pins) Micro-usb
<b>Power</b>	From 5V to 12V DC (AC/DC adapter in option). Max 5.5v with USB
<b>Certifications</b>	EC, EMC, ROHS, ETL, UL (some are in process)
<b>Keypad</b>	86x110x10 mm 145g
<b>Package</b>	140x135x50 mm 365g
<b>Use</b>	Environnement IP20 Temperature 0°C to 50°C

AVAILABLE MEMORY	
Depending on the number of scenes used	
CHANNELS	STEPS Using 8 scenes
4	9710
8	6470
16	3878
32	2150
64	1134
128	580
256	290
384	191
512	141

# EASY INSTALLATION

## 1. Mount an electrical box inside the wall



The S.T.I.C.K. controller can be installed in a standard electrical backbox. This box is usually 60mm high and wide, except in Japan and America where it is 83.5mm/3.29 inches high. You can insert the AC/DC adapter inside or outside the backbox.

## 2. Connect the wires

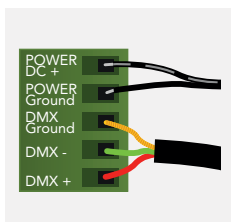
Use the green connector block or RJ45 cable

### POWER+DMX

WITH THE CONNECTOR BLOCK

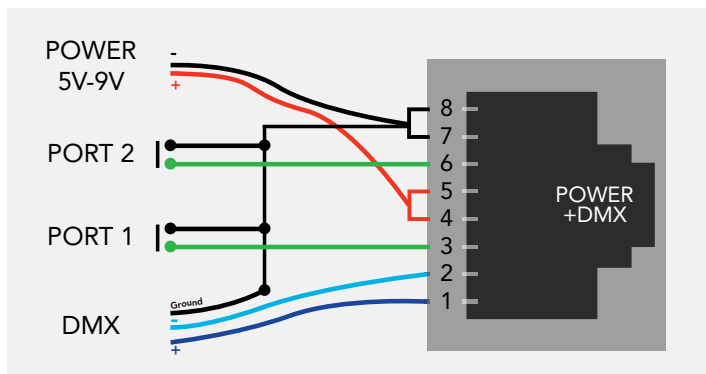
**DMX:** Connect the DMX cable to the lighting receivers (Leds, Dimmers, Fixtures..) (for XLR: 1=ground 2=dmx- 3=dmx+)

**POWER:** Connect the AC/DC adapter. Make sure not to invert the + and the ground.



### POWER+DMX

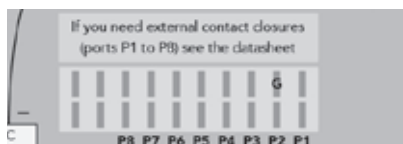
WITH THE RJ45 CABLE



## OTHER CONNECTIONS

20 PIN CMS CONNECTOR FOR PORTS

- remove the sticker
- mount a 20 pin surface connector (CMS)



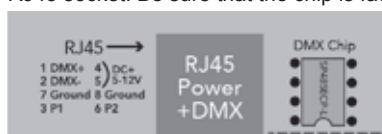
5 PIN CONNECTORS FOR PORTS

- remove the sticker
- solder the port connections directly to the PCB



DMX CHIP

- remove the sticker
- solder the DMX chip to the 8 pin connector on the right of the RJ45 socket. Be sure that the chip is facing downwards

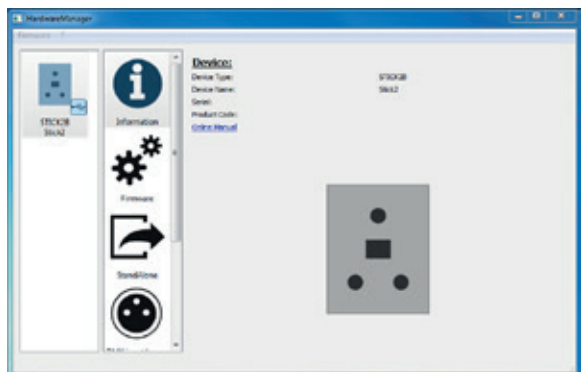


## 3. Mount the interface on the wall

First, plug the green connector block or RJ45 cable. Secondly, mount the back side of the interface on the wall with 2 or more screws. Then, close the unit by clipping the front panel onto the back plate. Wait 30 seconds for the touch sensitivity to adjust.

## SOFTWARE

Hardware Manager to set parameters



ESA2 (PC & Mac) to make the lighting programs

