

LINIO NEON 360° RGBW

Indoor/Outdoor · All-direction Bending · 360° Emitting

Beamever

Features

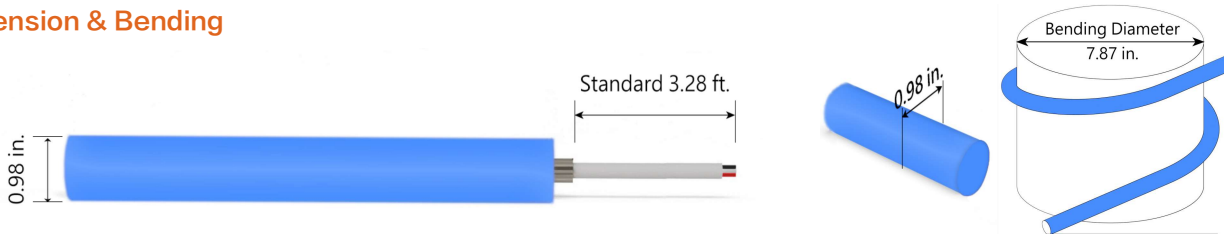
- Low voltage 24V DC
- Diameter of 25mm (0.98")
- Multiple mounting accessories for any design needs
- 360° emitting provides unparalleled creative possibilities
- High-grade Dow Corning silicone
- High-quality LED chips



Fixture type	
Project name	
Project phase	
Date	



Dimension & Bending



Physical

Dimensions	0.98" (diameter)
Bend Direction	All-direction bending
Bend Diameter	7.87" (200mm)
Cutting Interval	1.97" (50mm)
Field Cuttable	No
Housing Material	Dow Corning
Housing Technique	Tubing
Body Color	White
Finish	Matte
Feed Entry	Front, side
Feed Length	Standard length 3.28'
End Cap	Injected (Factory made only)
Mounting	17 types of mounting accessories
Storage Temperature	-40~60°C (-40~140°F)
Ambient Temperature	-40~45°C (-40~113°F)@4.88W
Max. Production Length	16.4ft (5m)

Performance & Electrical

Voltage	24VDC (23.5Vmin, 24.5Vmax)
Beam Angle	360°
MacAdam	3 steps
Efficacy (lm/W)	32lm/W @RGBW3200K 4.88W
CRI	N/A
Lumen Maintenance	> 30,000 hours
IP Rating	IP65
Resistance	UV, solvent, saltwater, flame
Dimming	Triac, ELV, PWM, 0-10V, DMX
Control Protocol	N/A
Warranty	5 years

Certification & Safety

Certifications	UL
Environment	Dry or damp locations

Lumen/ft	4.88W
■ R	18
■ G	59
■ B	10
■ RGBW27	154
■ RGBW32	155
■ RGBW45	156
■ RGBW65	157
Max. Run Length(ft)	16.4

LINIO NEON 360° RGBW

Indoor/Outdoor · All-direction Bending · 360° Emitting



Order Code

Series	Temp./Color	Power	Feed Entry	Connector Wire	End Cap	Length (ft)
LN360	RGBW27 (2700K) RGBW32 (3200K) RGBW45 (4500K) RGBW65 (6500K)	488=4.88W	FC=Front + Closed SC=Side+ Closed *Only available for feed entry in one side	OW=Open wire 3.28' MLC=Male connector 0.98' FLC=Female connector 0.98'	IJ=Injected end cap (IP65) * End caps are added by default	Min. - 1.97" Max. - 16.4' Cut Inc. - 1.97"

Example: LN360-RGBW27-488-FC-OW-IJ-11'

* Customizable—Contact Beamever representatives

Feed Entry Options

Front feed entry (F)



Side feed entry (S)



Closed feed entry (C)

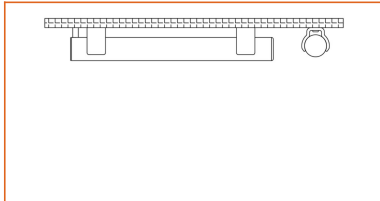


Mounting Options

Surface mount clear bracket - open clip

Code LN360-SFC-O

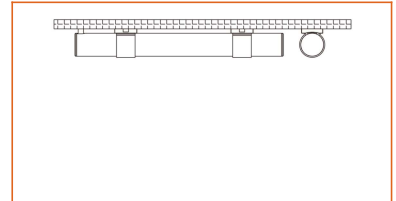
Mounting Type



Surface mount clear bracket - closed clip

Code LN360-SFC-C

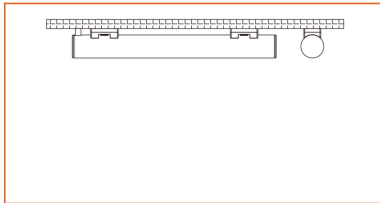
Mounting Type



Surface mount clear bracket - low profile clip

Code LN360-SFC-L

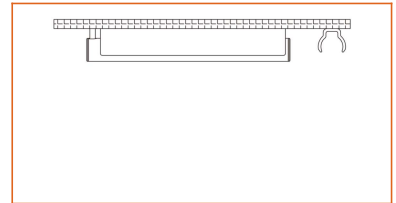
Mounting Type



Surface mount clear bracket - PC channel

Code LN360-SFC-PC

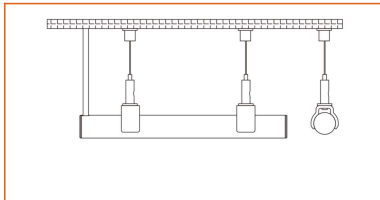
Mounting Type



Suspended mount clear bracket - open clip

Code LN360-SPC-O

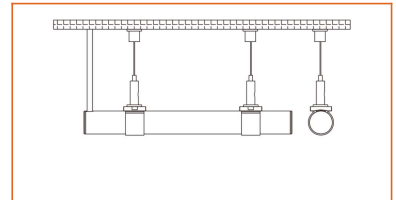
Mounting Type



Suspended mount clear bracket - closed clip

Code LN360-SPC-C

Mounting Type



LINIO NEON 360° RGBW

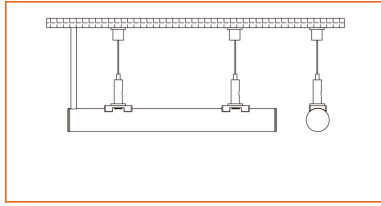
Indoor/Outdoor · All-direction Bending · 360° Emitting



Suspended mount clear bracket - low profile clip

Code LN360-SPC-L

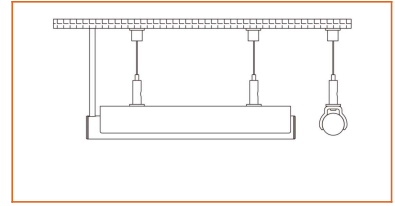
Mounting Type



Suspended mount clear bracket - PC channel

Code LN360-SPC-PC

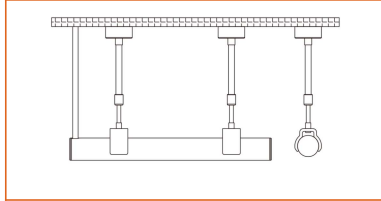
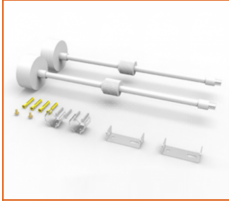
Mounting Type



Telescoping clear bracket - open clip (Length: 50-99cm)

Code LN360-TLC-O

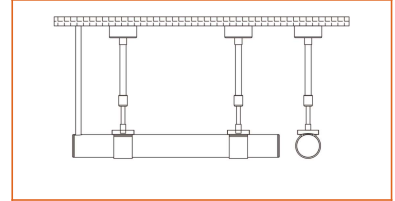
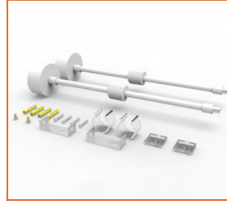
Mounting Type



Telescoping clear bracket - closed clip (Length: 50-99cm)

Code LN360-TLC-C

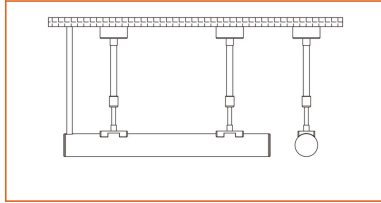
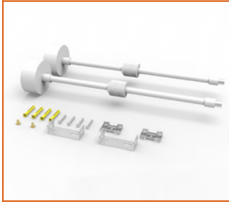
Mounting Type



Telescoping clear bracket - low profile clip (Length: 50-99cm)

Code LN360-TLC-L

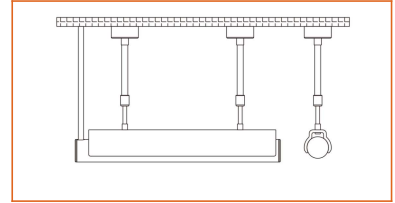
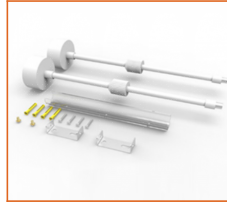
Mounting Type



Telescoping clear bracket - PC channel (Length: 50-99cm)

Code LN360-TLC-PC

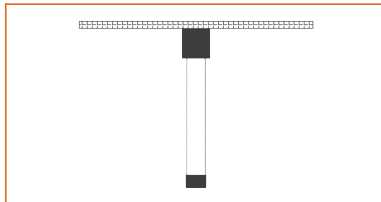
Mounting Type



Vertical metal flush surface mount bracket - black

Code LN360-VB

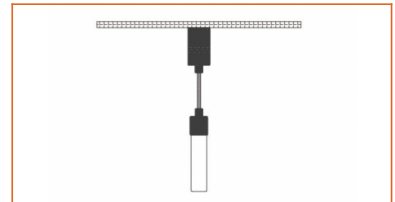
Mounting Type



Vertical pendant suspended mount bracket - black

Code LN360-VSB

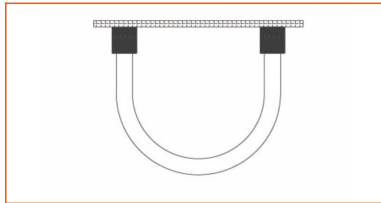
Mounting Type



U-shaped metal flush mounting bracket - black

Code LN360-UB

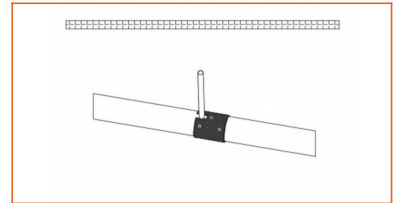
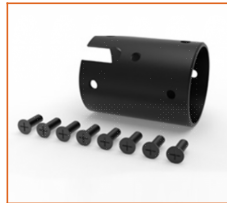
Mounting Type



Metal joiner bracket - black (side cable entry only)

Code LN360-JNB-S

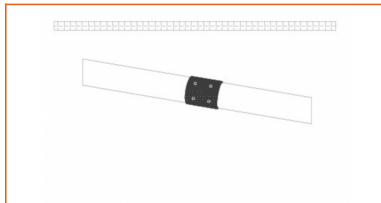
Mounting Type



Metal joiner bracket - black (closed end cap)

Code LN360-JNB-C

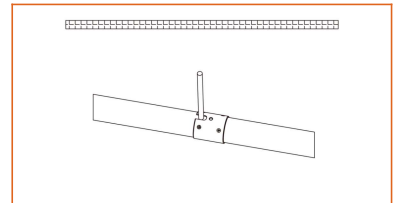
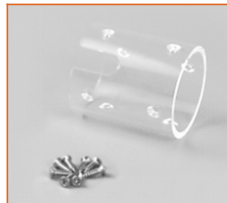
Mounting Type



Joiner bracket - clear (side cable entry only)

Code LN360-JNC-S

Mounting Type



LINIO NEON 360° RGBW

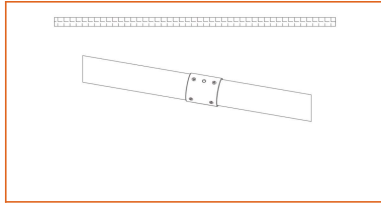
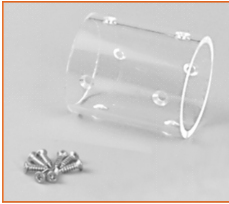
Indoor/Outdoor · All-direction Bending · 360° Emitting



Joiner bracket - clear (closed end cap)

Code LN360-JNC-C

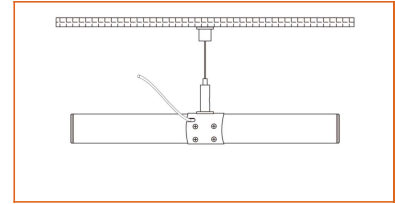
Mounting Type



Suspended joiner bracket - clear (side cable entry only)

Code LN360-JSC-S

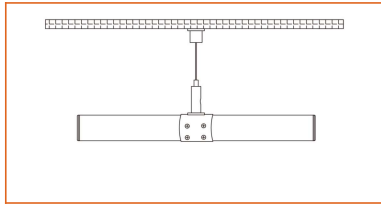
Mounting Type



Suspended joiner bracket - clear (closed end cap)

Code LN360-JSC-C

Mounting Type



Driver Options

Code	Max Load	Input	Output	Dimmable	Class 2	Environment	Size (L*W*H)
Non Dimmable							
KV-24030-ASW	30W	100-277VAC	24V	No	Yes	Dry/damp	6.10*2.12*0.78 inch
KV-24060-ASW	60W	100-277VAC	24V	No	Yes	Dry/damp	7.00*2.40*0.94 inch
KV-24096-ASW	96W	100-277VAC	24V	No	Yes	Dry/damp/wet	9.05*2.75*1.69 inch
KV-24150-ASW	150W	100-277VAC	24V	No	No	Dry/damp/wet	10.07*3.07*1.85 inch
KV-24200-ASW	200W	100-277VAC	24V	No	No	Dry/damp/wet	10.07*3.07*1.85 inch
KV-24300-ASW	300W	100-277VAC	24V	No	No	Dry/damp/wet	10.86*3.07*1.85 inch
DMX512 Dimmable							
KVX-24096-4C-A	96W	100-277VAC	24V	Yes	Yes	Dry/damp/wet	9.05*3.07*0.98 inch
KVX-24150-4C-A	150W	100-277VAC	24V	Yes	No	Dry/damp/wet	10.9*3.07*0.98 inch
KVX-24200-4C-A	200W	100-277VAC	24V	Yes	No	Dry/damp/wet	10.9*3.07*0.98 inch
KVX-24300-4C-A	300W	100-277VAC	24V	Yes	No	Dry/damp/wet	11.85*3.07*0.98 inch

* Please refer to the spec sheet of each power supply for more detailed information

DMX Decoder Options

Code	Description
LT-904	4 channels output, up to 576W output power
LT-916	16 channels output, up to 1152W output power
LT-932	32 channels output, up to 2304W output power

* Please refer to the spec sheet of each decoder for more detailed information

Controller Options

Code	Description
DINA-DR micro	DMX 60 channels, DMX Stand Alone controller with 10 scenes, USB connectivity for programming
SLESA-U9	DMX 256 channels, USB connection, stand alone mode with 1 area and 20 scenes
STICK-GA2	DMX 512 channels, ready to use (pre-loaded with 8 scenes and 170 RGB fixtures)
STICK-CW4	DMX 1024 channels, up to 36 scenes stored and directly recalled via 6 touch sensitive buttons

* Please refer to the spec sheet of each controller for more detailed information

LINIO NEON 360° RGBW

Indoor/Outdoor · All-direction Bending · 360° Emitting



Accessories Options (Optional, purchase for extra)



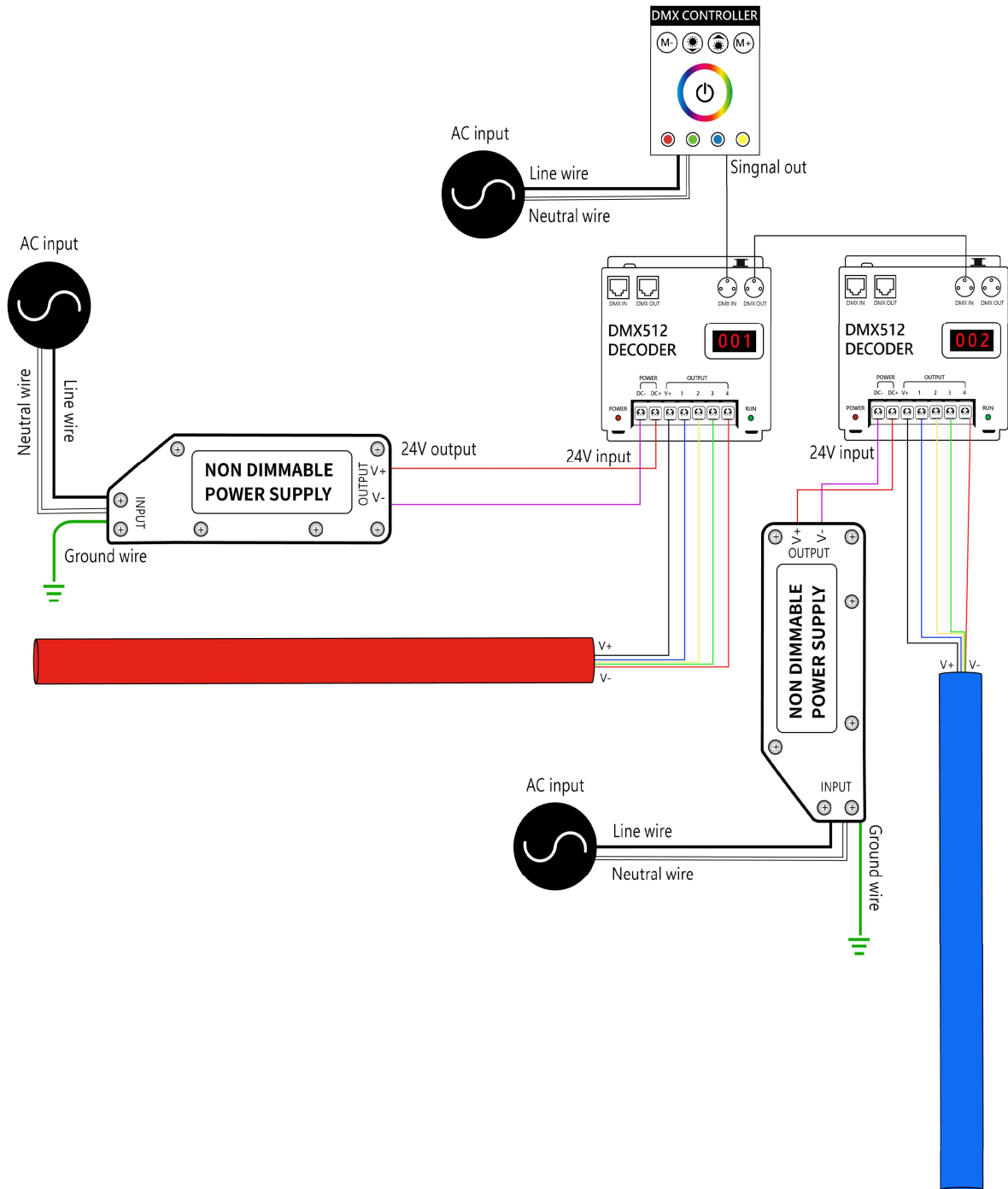
Name Male and female connectors

Code MFC67-5P

Male and female connectors with 11.81" cable, IP67, 5 pin

Wiring Diagram

Nicolaudie DMX Control System



LINIO NEON 360° RGBW

Indoor/Outdoor · All-direction Bending · 360° Emitting



DMX Driver System

