

# LINIO NEON 0612 SV RGB

Outdoor · Horizontal Bending · Field Cuttable



## Features

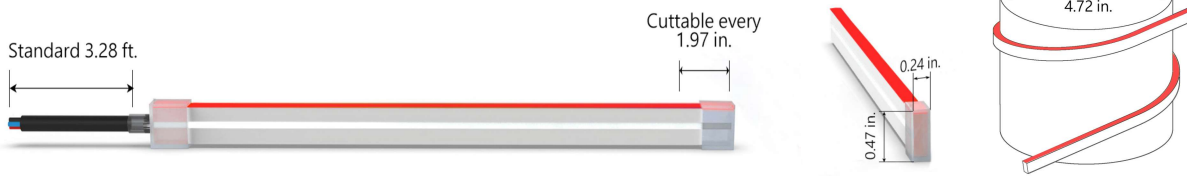
- Field cuttable & joinable
- Low voltage 24V DC
- RGB allows for versatile lighting effects
- IP67 rated, ideal for indoor and outdoor uses
- UV stable without yellowing or cracking over time
- 5 years warranty



|               |  |
|---------------|--|
| Fixture type  |  |
| Project name  |  |
| Project phase |  |
| Date          |  |



## Dimension & Bending



## Physical

|                        |                                |
|------------------------|--------------------------------|
| Dimensions             | 0.24" x 0.47" (width x height) |
| Bend Direction         | Horizontal bending             |
| Bend Diameter          | 4.72" (120mm)                  |
| Cutting Interval       | 1.97" (50mm)                   |
| Field Cuttable         | Yes                            |
| Housing Material       | Dow Corning                    |
| Housing Technique      | Co-extrusion                   |
| Body Color             | White                          |
| Finish                 | Glossy                         |
| Feed Entry             | Front, side, bottom            |
| Feed Length            | Standard length 3.28'          |
| End Cap                | Silicone                       |
| Mounting               | Clips or channel (rigid)       |
| Storage Temperature    | -40~60°C (-40~140°F)           |
| Ambient Temperature    | -40~60°C (-40~140°F)@3.05W     |
| Max. Production Length | 98.43ft (30m)                  |

## Performance & Electrical

|                   |                               |
|-------------------|-------------------------------|
| Voltage           | 24VDC (23.5Vmin, 24.5Vmax)    |
| Beam Angle        | 120°                          |
| MacAdam           | 3 steps                       |
| Efficacy (lm/W)   | 14.8lm/W @3.05W               |
| CRI               | N/A                           |
| Lumen Maintenance | > 30,000 hours                |
| IP Rating         | IP67/IP44                     |
| Resistance        | UV, solvent, saltwater, flame |
| Dimming           | DMX                           |
| Control Protocol  | N/A                           |
| Warranty          | 5 years                       |

## Certification & Safety

|                |                            |
|----------------|----------------------------|
| Certifications | UL                         |
| Environment    | Dry, damp or wet locations |

| Lumen/ft            | 3.05W |
|---------------------|-------|
| ■ R                 | 11    |
| ■ G                 | 29    |
| ■ B                 | 5     |
| ■ RGB               | 45    |
| Max. Run Length(ft) | 16.4  |

# LINIO NEON 0612 SV RGB

Outdoor · Horizontal Bending · Field Cuttable



## Order Code

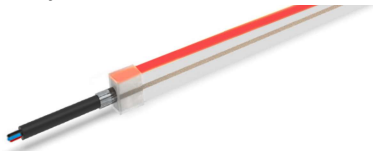
| Series   | Temp./Color | Power     | Feed Entry   | Connector Wire  | End Cap  | Length (ft)                                      |
|----------|-------------|-----------|--|---|--|--|
| LN0612SV | RGB         | 305=3.05W | FF=Front + Front<br>BB=Bottom + Bottom<br>LSLS=Left Side + Left Side<br>RRSR=Right Side + Right Side<br>FC=Front + Closed<br>FB=Front + Bottom<br>FLS=Front + Left Side<br>FRS=Front + Right Side<br>BC=Bottom + Closed<br>BLS=Bottom + Left Side<br>BRS=Bottom + Right side<br>LSC=Left side + Closed<br>RSC=Right side + Closed<br>LSRS=Left side + Right side | OW=Open wire 3.28'<br>MFC=Male & female connector 0.98' | IJ=Injected end cap (IP44)<br>*Only available for front/closed entry<br>SEC=Silicone end cap (IP67)<br>* End caps are added by default | Min. - 1.97"<br>Max. - 98.4'<br>Cut Inc. - 1.97" |

Example: LN0612SV-RGB-305-FF-OW-IJ-11'

\* Customizable—Contact Beamever representatives

## Feed Entry Options

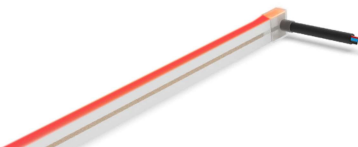
Front feed entry (F)



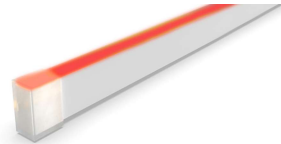
Left side feed entry (LS)



Right side feed entry (RS)



Closed (C)



Bottom feed entry (B)

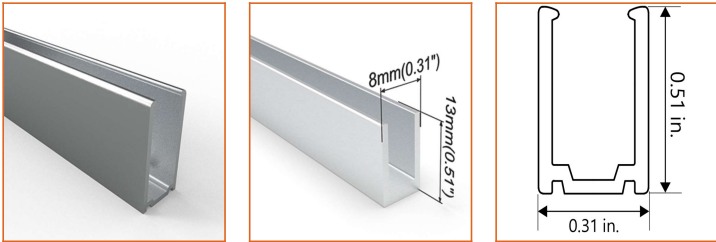


# LINIO NEON 0612 SV RGB

Outdoor · Horizontal Bending · Field Cuttable

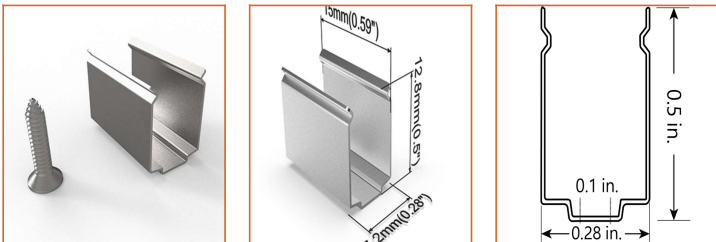


## Mounting Options



\* Standard length is 3.28' / pcs.

|                |                           |
|----------------|---------------------------|
| Name           | Straight Aluminum channel |
| Code           | LN0612-SC                 |
| Material       | Aluminum                  |
| Mounting type  | Surface mounted           |
| Length         | 3.28' (1m)                |
| Width          | 0.31" (8mm)               |
| Height         | 0.51" (13mm)              |
| Internal width | 0.26" (6.5mm)             |



\* Recommend use 1 mounting clip for 1' of neon.

|                |                 |
|----------------|-----------------|
| Name           | Mounting clip   |
| Code           | LN0612-CL       |
| Material       | Stainless Steel |
| Mounting type  | Surface mounted |
| Length         | 0.59" (15mm)    |
| Width          | 0.28" (7.2mm)   |
| Height         | 0.5" (12.8mm)   |
| Internal Width | /               |

## Driver Options

| Code                   | Max Load | Input      | Output | Dimmable | Class 2 | Environment  | Size (L*W*H)         |
|------------------------|----------|------------|--------|----------|---------|--------------|----------------------|
| <b>Non Dimmable</b>    |          |            |        |          |         |              |                      |
| KV-24030-ASW           | 30W      | 100-277VAC | 24V    | No       | Yes     | Dry/damp     | 6.10*2.12*0.78 inch  |
| KV-24060-ASW           | 60W      | 100-277VAC | 24V    | No       | Yes     | Dry/damp     | 7.00*2.40*0.94 inch  |
| KV-24096-ASW           | 96W      | 100-277VAC | 24V    | No       | Yes     | Dry/damp/wet | 9.05*2.75*1.69 inch  |
| KV-24150-ASW           | 150W     | 100-277VAC | 24V    | No       | No      | Dry/damp/wet | 10.07*3.07*1.85 inch |
| KV-24200-ASW           | 200W     | 100-277VAC | 24V    | No       | No      | Dry/damp/wet | 10.07*3.07*1.85 inch |
| KV-24300-ASW           | 300W     | 100-277VAC | 24V    | No       | No      | Dry/damp/wet | 10.86*3.07*1.85 inch |
| <b>DMX512 Dimmable</b> |          |            |        |          |         |              |                      |
| KVX-24096-3C-A         | 96W      | 100-277VAC | 24V    | Yes      | Yes     | Dry/damp/wet | 9.05*3.07*0.98 inch  |
| KVX-24150-3C-A         | 150W     | 100-277VAC | 24V    | Yes      | No      | Dry/damp/wet | 10.9*3.07*0.98 inch  |
| KVX-24200-3C-A         | 200W     | 100-277VAC | 24V    | Yes      | No      | Dry/damp/wet | 10.9*3.07*0.98 inch  |
| KVX-24300-3C-A         | 300W     | 100-277VAC | 24V    | Yes      | No      | Dry/damp/wet | 11.85*3.07*0.98 inch |

\* Please refer to the spec sheet of each power supply for more detailed information

## DMX Decoder Options

| Code   | Description                                  |
|--------|--|
| LT-903 | 3 channels output, up to 576W output power   |
| LT-912 | 12 channels output, up to 1152W output power |
| LT-924 | 24 channels output, up to 1728W output power |

\* Please refer to the spec sheet of each decoder for more detailed information

## Controller Options

| Code          | Description   |
|---------------|---|
| DINA-DR micro | DMX 60 channels, DMX Stand Alone controller with 10 scenes, USB connectivity for programming  |
| SLESA-U9      | DMX 256 channels, USB connection, stand alone mode with 1 area and 20 scenes                  |
| STICK-GA2     | DMX 512 channels, ready to use (pre-loaded with 8 scenes and 170 RGB fixtures)                |
| STICK-CW4     | DMX 1024 channels, up to 36 scenes stored and directly recalled via 6 touch sensitive buttons |

\* Please refer to the spec sheet of each controller for more detailed information

# LINIO NEON 0612 SV RGB

Outdoor · Horizontal Bending · Field Cuttable



## Accessories Options (Optional, purchase for extra)



Name Silicone closed end cap

Code LN0612-SEC-C

Closed silicone end cap for LINIO NEON 0612 SV



Name Silicone front end cap

Code LN0612-SEC-F-4P

Silicone end cap front entry with 11.81" 4 pin cable



Name Silicone side end cap

Code LN0612-SEC-S-4p

Silicone end cap side entry with 11.81" 4 pin cable



Name Silicone bottom end cap

Code LN0612-SEC-B-4P

Silicone end cap bottom entry with 11.81" 4 pin cable



Name Male & female connectors

Code MFC-4P-67

Male and female connectors with 11.81" cable, IP67, 4 pin



Name Extension connectors

Code ETC-4P-67-1M

Extension Male & Female connectors with 1m (3.28ft) cable, IP67, 4 pin



Name Extension connectors

Code ETC-4P-67-5M

Extension Male & Female connectors with 5m (16.4ft) cable, IP67, 4 pin



Name Silicone glue

Code SG

Silicone glue

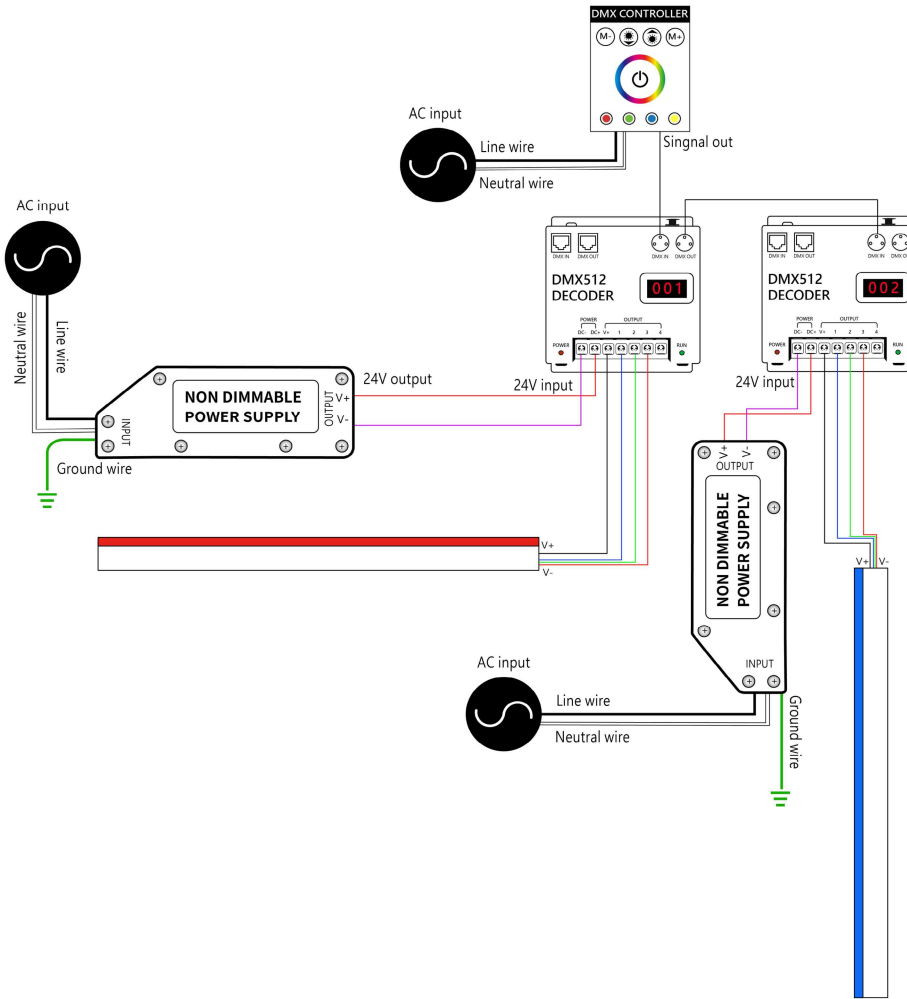
# LINIO NEON 0612 SV RGB

Outdoor · Horizontal Bending · Field Cuttable



## Wiring Diagram

Nicolaudie DMX Control System



## DMX Driver System

