

BELA TAPE RGBW

Indoor · RGBW

Beamever

Features

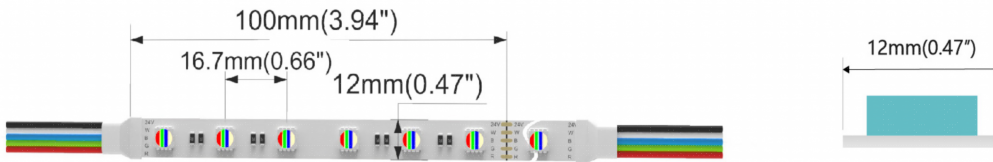
- Field cuttable & joinable
- Operates at safe and energy-efficient voltage of DC24V
- Slim and elegant, ideal for indoor applications
- 3M tape on the back makes it easy to install
- RGBW allows for versatile lighting effects
- 5 years warranty



Fixture type	
Project name	
Project phase	
Date	



Dimension & Bending



Physical

PCB Width	0.47" (12mm)
LED Pitch	0.66" (16.7mm)
Cutting Interval	3.94" (100mm)
LED Brand	Sanan
LED Size	5050 (4 in 1)
LED Quantity	18 LEDs/ft (60 LEDs/m)
Housing Material	N/A
Housing Technique	N/A
Adhesive Type	Yellow 3M tape
Feed Entry	Front
Feed Length	Standard length 3.28'
Storage Temperature	-40~60°C(-40~140°F)
Ambient Temperature	-25°C (-13°F) to 45°C (113°F)@5.85W
Max Production Length	98.4ft (30m)

Performance & Electrical

Voltage	24VDC (23.5Vmin, 24.5Vmax)
Beam Angle	120°
MacAdam	3 steps
Efficacy (lm/W)	61lm/W @RGBW4000K
CRI	N/A
Lumen Maintenance	> 30,000 hours
IP Rating	IP20
Resistance	UV, solvent, saltwater, flame
Dimming	Triac, ELV, PWM, 0-10V, DMX
Control Protocol	N/A
Warranty	5 years

Certification & Safety

Certifications	UL
Environment	Dry location

Lumen/ft	5.85W
R	39
G	102
B	29
RGBW27	337
RGBW30	346
RGBW40	359
RGBW65	363
Max. Run Length(ft)	16.4

BELA TAPE RGBW

Indoor · RGBW



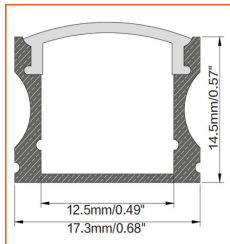
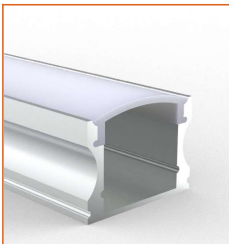
Order Code

Series	Temp./Color	Power	Connector Wire	IP Rating	Length (ft)
BELA	RGBW27 (2700K) RGBW30 (3000K) RGBW40 (4000K) RGBW65 (6500K)	585=5.85W	OW=Open wire 3.28' MFC=Male & female connector 0.98'	20=IP20	Min. - 3.94' Max. - 98.4' Cut Inc. - 3.94'

Example: BELA-RGBW27-585-OW-20-11'

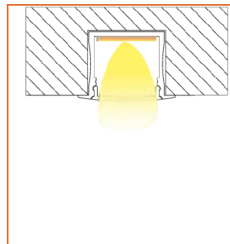
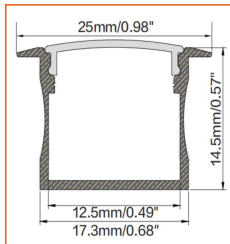
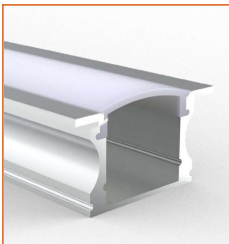
* Customizable—Contact Beamever representatives

Mounting Options



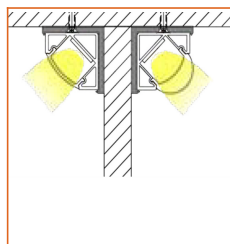
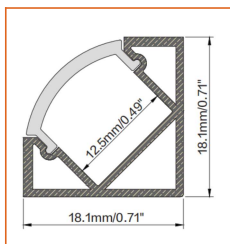
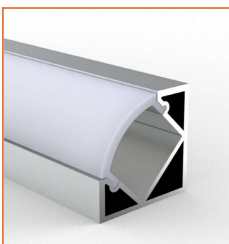
* Standard length is 3.28'/pcs.

Name	Straight aluminum channel
Code	BE1202
Material	Aluminum
Mounting style	Surface mounted
Length	3.28' (1m)
Width	0.68" (17.3mm)
Height	0.57" (14.5mm)
Internal width	0.49" (12.5mm)



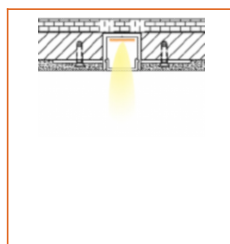
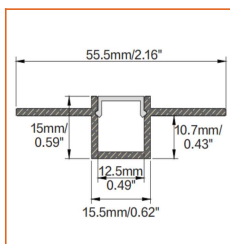
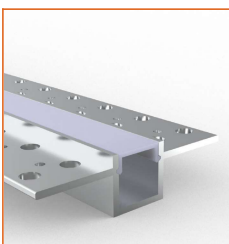
* Standard length is 3.28'/pcs.

Name	Straight aluminum channel
Code	BE1201
Material	Aluminum
Mounting style	Recessed mounted
Length	3.28' (1m)
Width	0.68" (17.3mm)
Height	0.57" (14.5mm)
Internal width	0.49" (12.5mm)



* Standard length is 3.28'/pcs.

Name	Straight aluminum channel
Code	BE1203
Material	Aluminum
Mounting style	Angled mounted
Length	3.28' (1m)
Width	0.71" (18.1mm)
Height	0.71" (18.1mm)
Internal width	0.49" (12.5mm)



* Standard length is 3.28'/pcs.

Name	Straight aluminum channel
Code	BE5615
Material	Aluminum
Mounting style	Mud-in
Length	3.28' (1m)
Width	0.62" (15.5mm)
Height	0.59" (15mm)
Internal width	0.49" (12.5mm)

* For more options, please refer to "Beamever Profile Spec Sheet"

BELA TAPE RGBW

Indoor · RGBW



Driver Options

Code	Max Load	Input	Output	Dimmable	Class 2	Environment	Size (L*W*H)
Non Dimmable							
KV-24030-ASW	30W	100-277VAC	24V	No	Yes	Dry/damp	6.10*2.12*0.78 inch
KV-24060-ASW	60W	100-277VAC	24V	No	Yes	Dry/damp	7.00*2.40*0.94 inch
KV-24096-ASW	96W	100-277VAC	24V	No	Yes	Dry/damp/wet	9.05*2.75*1.69 inch
KV-24150-ASW	150W	100-277VAC	24V	No	No	Dry/damp/wet	10.07*3.07*1.85 inch
KV-24200-ASW	200W	100-277VAC	24V	No	No	Dry/damp/wet	10.07*3.07*1.85 inch
KV-24300-ASW	300W	100-277VAC	24V	No	No	Dry/damp/wet	10.86*3.07*1.85 inch
DMX512 Dimmable							
KVX-24096-4C-A	96W	100-277VAC	24V	Yes	Yes	Dry/damp/wet	9.05*3.07*0.98 inch
KVX-24150-4C-A	150W	100-277VAC	24V	Yes	No	Dry/damp/wet	10.9*3.07*0.98 inch
KVX-24200-4C-A	200W	100-277VAC	24V	Yes	No	Dry/damp/wet	10.9*3.07*0.98 inch
KVX-24300-4C-A	300W	100-277VAC	24V	Yes	No	Dry/damp/wet	11.85*3.07*0.98 inch

* Please refer to the spec sheet of each power supply for more detailed information

DMX Decoder Options

Code	Description
LT-904	4 channels output, up to 576W output power
LT-916	16 channels output, up to 1152W output power
LT-932	32 channels output, up to 2304W output power

* Please refer to the spec sheet of each decoder for more detailed information

Controller Options

Code	Description
DINA-DR micro	DMX 60 channels, DMX Stand Alone controller with 10 scenes, USB connectivity for programming
SLESA-U9	DMX 256 channels, USB connection, stand alone mode with 1 area and 20 scenes
STICK-GA2	DMX 512 channels, ready to use (pre-loaded with 8 scenes and 170 RGB fixtures)
STICK-CW4	DMX 1024 channels, up to 36 scenes stored and directly recalled via 6 touch sensitive buttons

* Please refer to the spec sheet of each controller for more detailed information

BELA TAPE RGBW

Indoor · RGBW



Accessories Options (Optional)



Name Strip to strip connector
Code BELA20-STS-5P-12
Connector for 12mm strip to strip connection, IP20, 5 pin



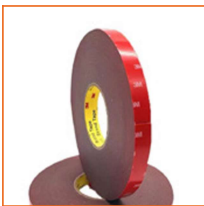
Name Strip to cable connector
Code BELA20-STC-5P-12
Connector for 12mm strip to cable connection, IP20, 5 pin



Name Male & female connector
Code MFC-5P-20
Male and female connector with 11.81" cable, IP20, 5 pin



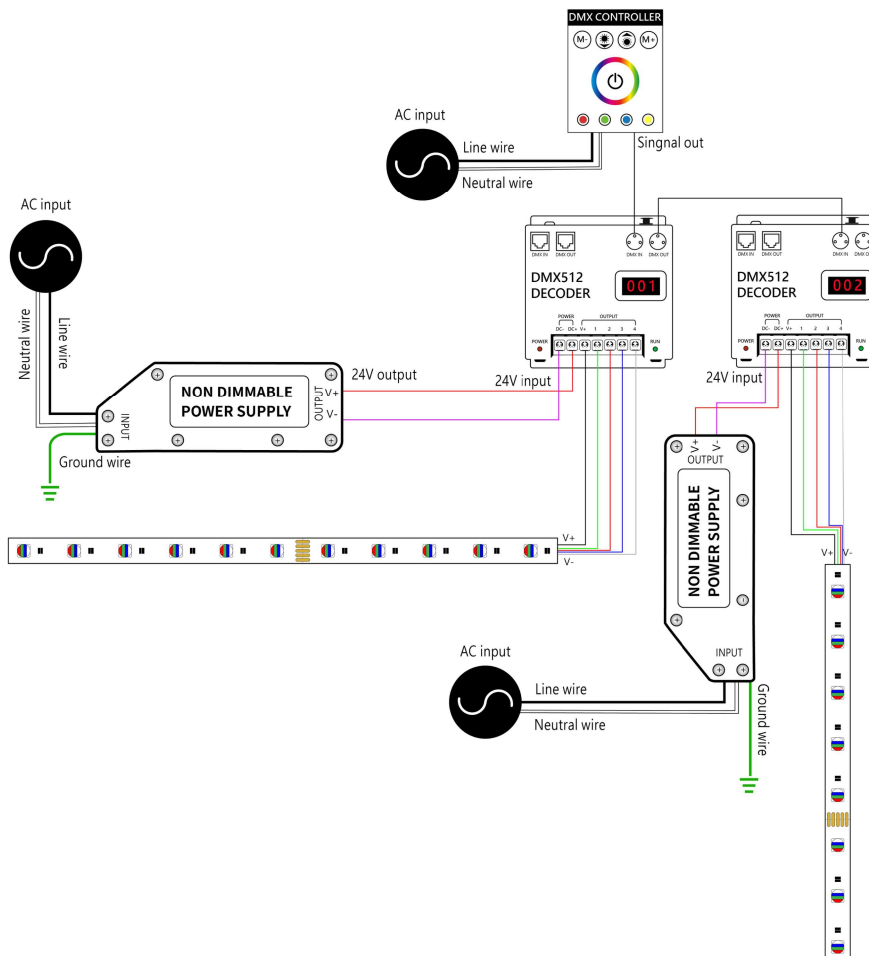
Name Male & female DC connector
Code MFC-DC-44
Male and female DC connector with 11.81" cable, IP44



Name VHB 3M adhesive tape
Code VHB
VHB 3M adhesive back tape, stronger stickiness.

Wiring Diagram

Nicolaudie DMX Control System



BELA TAPE RGBW

Indoor · RGBW



DMX Driver System

