

NOVA TAPE S TW

Indoor · Ultra-slim · Dot-free

Beamever

Features

- Field cuttable
- Channel-free, easy to mount on smooth surface
- Ultra-slim, ideal for edge lighting applications
- 3M tape on the back makes it easy to install
- 5 years warranty
- Available in a variety of CCT color options



Fixture type	
Project name	
Project phase	
Date	



Dimension



Physical

PCB Width	0.16" (4mm)
LED Pitch	N/A
Cutting Interval	1.09" (27.8mm)
LED Brand	Sanan
LED Type	COB
LED Quantity	175 LEDs/ft (576 LEDs/m)
Housing Material	N/A
Housing Technique	N/A
Adhesive Type	Yellow 3M tape
Feed Entry	Front
Feed Length	Standard length 3.28'
Storage Temperature	-40°C(-40°F) to 60°C (140°F)
Ambient Temperature	-40°C(-40°F) to 60°C (140°F)@3.66W
Max Production Length	98.4ft (30m)

Performance & Electrical

Voltage	24VDC (23.5Vmin, 24.5Vmax)
Beam Angle	150°
MacAdam	3 steps
Efficacy (lm/W)	105lm/W @2700K+5000K 3.66W
CRI	Ra90
Lumen Maintenance	> 54,000 hours
IP Rating	IP20
Resistance	UV, solvent, saltwater, flame
Dimming	Triac, ELV, PWM, 0-10V, DMX, SPI
Control Protocol	N/A
Warranty	5 years

Certification & Safety

Certifications	UL
Environment	Dry locations

Lumen/ft	3.66W
■ 2700K	171
■ 5000K	215
■ 2700K+5000K	386
Max. Run Length(ft)	16.4

NOVA TAPE S TW

Indoor · Ultra-slim · Dot-free



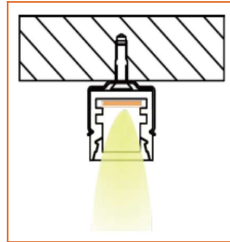
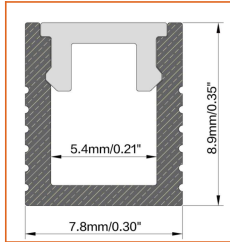
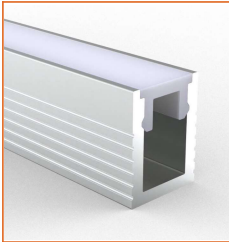
Order Code

Series	Temp./Color	Power	Connector Wire	IP Rating	Length (ft)
NOVAS	2750=2700K+50 00K	366=3.66W	OW=Open wire 3.28' MFC=Male & female connector 0.98'	20=IP20	Min. - 1.09" Max. - 98.4' Cut Inc. - 1.09"

Example: NOVAS-2750-366-OW-20-11'

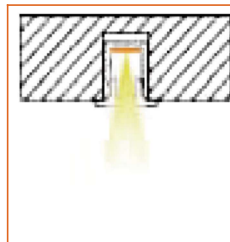
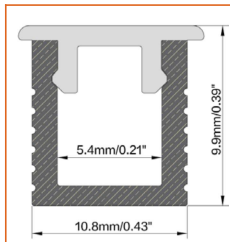
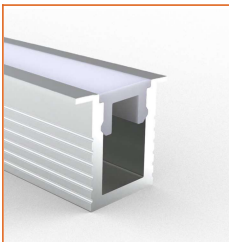
* Customizable—Contact Beamever representatives

Mounting Options



* Standard length is 3.28'/pcs.

Name	Straight alluminum channel
Code	BE078
Material	Alluminum
Mounting style	Surface mounted
Length	3.28' (1m)
Width	0.3" (7.8mm)
Height	0.35" (8.9mm)
Internal width	0.21" (5.4mm)



* Standard length is 3.28'/pcs.

* For more options, please refer to "Beamever Profile Spec Sheet"

Name	Recessed alluminum channel
Code	BE078-1
Material	Alluminum
Mounting style	Recessed mounted
Length	3.28' (1m)
Width	0.43" (10.8mm)
Height	0.39" (9.9mm)
Internal width	0.21" (5.4mm)

Driver Options

Code	Max Load	Input	Output	Dimmable	Class 2	Environment	Size (L*W*H)
LM-100-24-U2A2	100W	100-277VAC	24V	Yes	No	Dry	13.86 x 1.69 x 1.18 inch

* Please refer to the spec sheet of each power supply for more detailed information

Accessories Options (Optional)



Name Male & female connector

Code MFC-2P-20

Male and female connector with 11.81" cable, IP20, 2 pin



Name Male & female DC connector

Code MFC-DC-44

Male and female DC connector with 11.81" cable, IP44



Name VHB 3M adhesive tape

Code VHB

VHB 3M adhesive back tape, stronger stickiness.

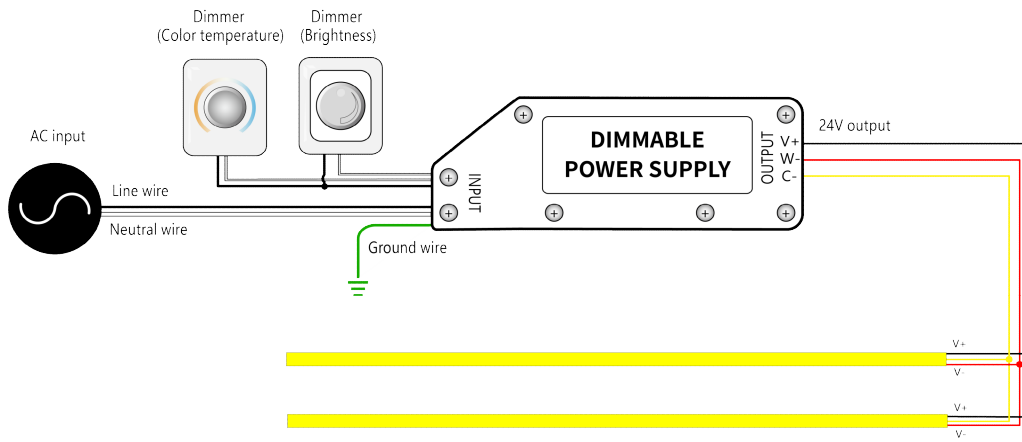
NOVA TAPE S TW

Indoor · Ultra-slim · Dot-free



Wiring Diagram

Dimmable



* Dimmers need to be purchased separately.