

# AERO TAPE TW

Indoor · Tunable White

# Beamever

## Features

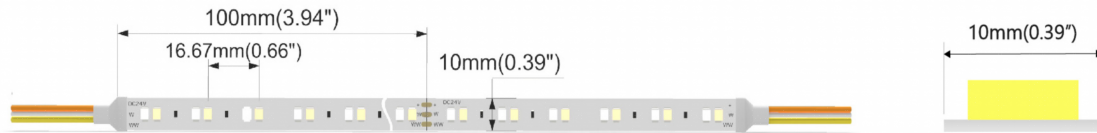
- Field cuttable & joinable
- Operates at safe and energy-efficient voltage of DC24V
- Slim and elegant, ideal for indoor applications
- 3M tape on the back makes it easy to install
- Available in a variety of CCT color options
- 5 years warranty



Fixture type	
Project name	
Project phase	
Date	



## Dimension & Bending



## Physical

PCB Width	0.39" (10mm)
LED Pitch	0.66" (16.67mm)
Cutting Interval	3.94" (100mm)
LED Brand	Sanan
LED Size	2835
LED Quantity	36 LEDs/ft (120 LEDs/m)
Housing Material	N/A
Housing Technique	N/A
Adhesive Type	Yellow 3M tape
Feed Entry	Front
Feed Length	Standard length 3.28'
Storage Temperature	-40~60°C (-40~140°F)
Ambient Temperature	-25°C (-13°F) to 45°C (113°F)@7.32W
Max Production Length	98.4ft (30m)

## Performance & Electrical

Voltage	24VDC (23.5Vmin, 24.5Vmax)
Beam Angle	120°
MacAdam	3 steps
Efficacy (lm/W)	78lm/W
CRI	Ra90
Lumen Maintenance	> 54,000 hours
IP Rating	IP20
Resistance	UV, solvent, saltwater, flame
Dimming	Triac, ELV, PWM, 0-10V, DMX
Control Protocol	N/A
Warranty	5 years

## Certification & Safety

Certifications	UL
Environment	Dry location

<b>Lumen/ft</b>	<b>7.32W</b>
■ 2700K+6500K	569
Max. Run Length(ft)	16.4

## Order Code

Series	Temp./Color	Power	Connector Wire	IP Rating	Length (ft)
AERO	2765=2700K+6500K	732=7.32W	OW=Open wire 3.28' MFC=Male & female connector 0.98'	20=IP20	Min. - 3.94' Max. - 98.4' Cut Inc. - 3.94'

Example: AERO-2765-732-OW-20-11'

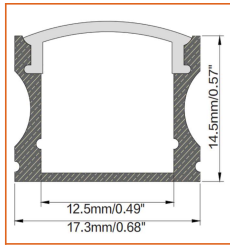
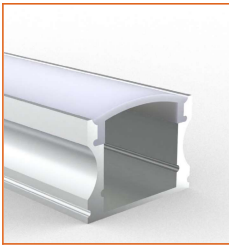
\* Customizable—Contact Beamever representatives

# AERO TAPE TW

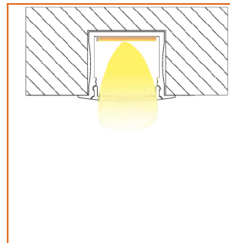
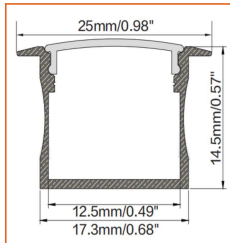
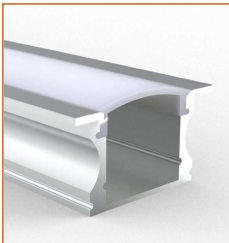
Indoor · Tunable White



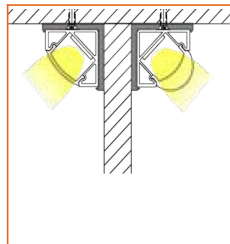
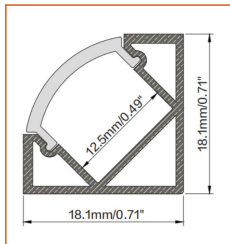
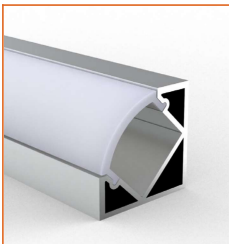
## Mounting Options



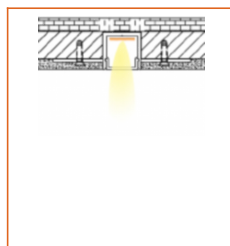
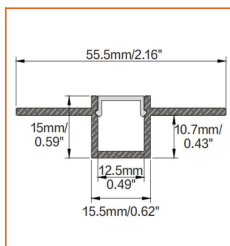
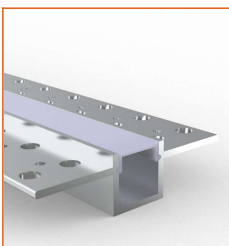
\* Standard length is 3.28'/pcs.



\* Standard length is 3.28'/pcs.



\* Standard length is 3.28'/pcs.



\* Standard length is 3.28'/pcs.

\* For more options, please refer to "Beamever Profile Spec Sheet"

Name	Straight aluminum channel
Code	BE1202
Material	Alluminum
Mounting style	Surface mounted
Length	3.28' (1m)
Width	0.68" (17.3mm)
Height	0.57" (14.5mm)
Internal width	0.49" (12.5mm)

Name	Straight aluminum channel
Code	BE1201
Material	Alluminum
Mounting style	Recessed mounted
Length	3.28' (1m)
Width	0.68" (17.3mm)
Height	0.57" (14.5mm)
Internal width	0.49" (12.5mm)

Name	Straight aluminum channel
Code	BE1203
Material	Alluminum
Mounting style	Angled mounted
Length	3.28' (1m)
Width	0.71" (18.1mm)
Height	0.71" (18.1mm)
Internal width	0.49" (12.5mm)

Name	Straight aluminum channel
Code	BE5615
Material	Alluminum
Mounting style	Mud-in
Length	3.28' (1m)
Width	0.62" (15.5mm)
Height	0.59" (15mm)
Internal width	0.49" (12.5mm)

## Driver Options

Code	Max Load	Input	Output	Dimmable	Class 2	Environment	Size (L*W*H)
LM-100-24-U2A2	100W	100-277VAC	24V	Yes	No	Dry	13.86 x 1.69 x 1.18 inch

\* Please refer to the spec sheet of each power supply for more detailed information

# AERO TAPE TW

Indoor · Tunable White



## Accessories Options (Optional)



Name Strip to strip connector  
Code AERO20-ST3-3P-10  
Connector for 0.39" (10mm) AERO TAPE, IP20



Name Strip to strip jumper connector  
Code AERO20-ST3J-3P-10  
Strip to strip jumper connector for 0.39" (10mm) AERO TAPE, IP20



Name Strip to cable connector  
Code AERO20-STC-3P-10  
Strip to cable connector 0.39" (10mm) AERO TAPE, IP20



Name L-shaped connector  
Code AERO20-L-3P-10  
L-shaped connector for 0.39" (10mm) AERO TAPE, IP20



Name L-shaped corner connector  
Code AERO20-LC-3P-10  
Strip to cable connector 0.31" (8mm) NOVA TAPE, IP20



Name R-shaped corner connector  
Code AERO20-RC-3P-10  
R-shaped corner connector for 0.39" (10mm) AERO TAPE, IP20



Name Male & female connector  
Code MFC-3P-20  
Male and female connector with 11.81" cable, IP20, 3 pin



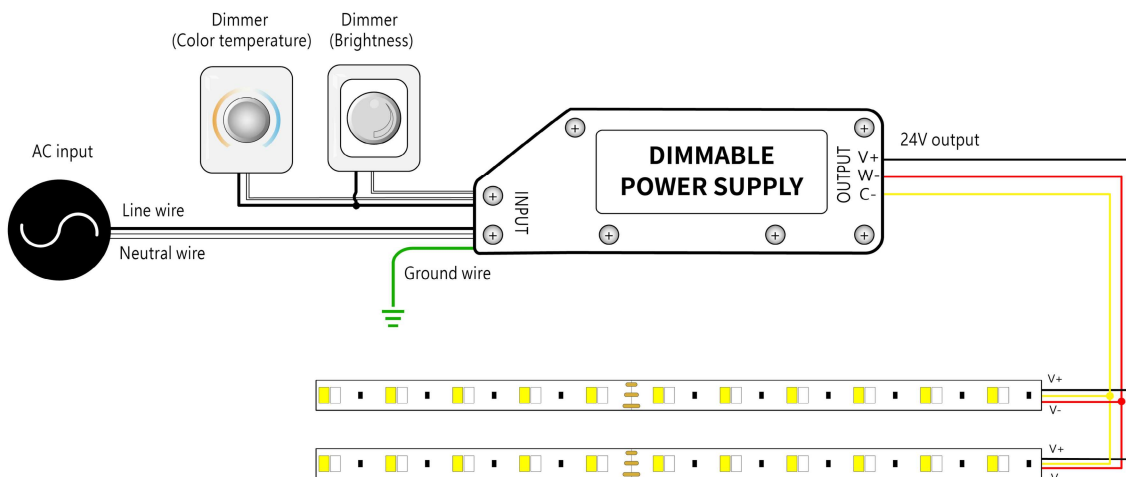
Name Male & female DC connector  
Code MFC-DC-44  
Male and female DC connector with 11.81" cable, IP44



Name VHB 3M adhesive tape  
Code VHB  
VHB 3M adhesive back tape, stronger stickiness.

## Wiring Diagram

Dimmable



\* Dimmers need to be purchased separately.