

NOVA TAPE TW

Indoor · Dot-free · Tunable White

Beamever

Features

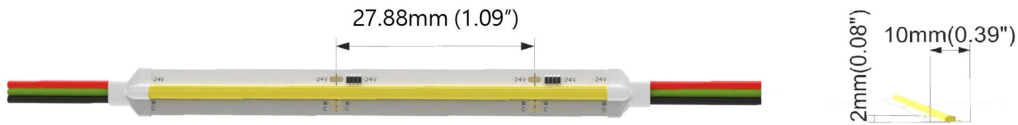
- Field cuttable & joinable
- Channel-free, easy to mount on smooth surface
- Slim and elegant, ideal for indoor applications
- 3M tape on the back makes it easy to install
- 5 years warranty
- Tunable white, CCT changing from 2700K to 6500K



Fixture type	
Project name	
Project phase	
Date	



Dimension



Physical

PCB Width	0.39" (10mm)
LED Pitch	N/A
Cutting Interval	1.09" (27.8mm)
LED Brand	Sanan
LED Type	COB
LED Quantity	175 LEDs/ft (576 LEDs/m)
Housing Material	N/A
Housing Technique	N/A
Adhesive Type	Yellow 3M tape
Feed Entry	Front
Feed Length	Standard length 3.28'
Storage Temperature	-40°C(-40°F) to 60°C (140°F)
Ambient Temperature	-40°C(-40°F) to 45°C (113°F)@4.57W
Max Production Length	98.4ft (30m)

Performance & Electrical

Voltage	24VDC (23.5Vmin, 24.5Vmax)
Beam Angle	150°
MacAdam	3 steps
Efficacy (lm/W)	107lm/W @2700K+6500K @4.57W
CRI	Ra90
Lumen Maintenance	> 54,000 hours
IP Rating	IP20
Resistance	UV, solvent, saltwater, flame
Dimming	Triac, ELV, PWM, 0-10V, DMX, SPI
Control Protocol	N/A
Warranty	5 years

Certification & Safety

Certifications	UL
Environment	Dry locations

Lumen/ft	4.57W
■ 2700K	229
■ 6500K	269
■ 2700K+6500K	489
Max. Run Length(ft)	16.4

Order Code

Series	Temp./Color	Power	Connector Wire	IP Rating	Length (ft)
NOVA	2765=2700K+6500K	457=4.57W	OW=Open wire 3.28' MFC=Male & female connector 0.98'	20=IP20	Min. - 1.09" Max. - 98.4' Cut Inc. - 1.09"

Example: NOVA-2765-457-OW-20-11'

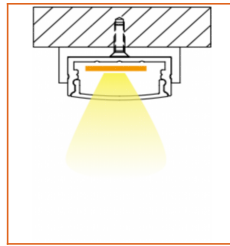
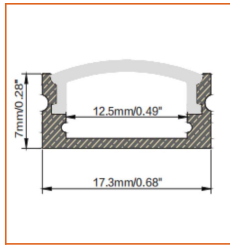
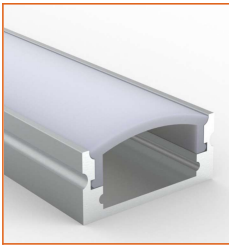
* Customizable—Contact Beamever representatives

NOVA TAPE TW

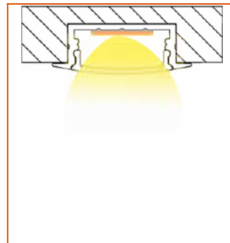
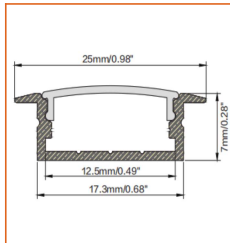
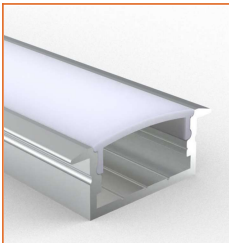
Indoor · Dot-free · Tunable White



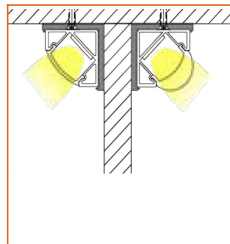
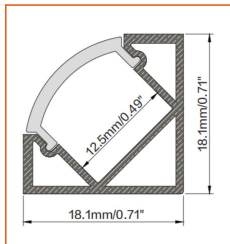
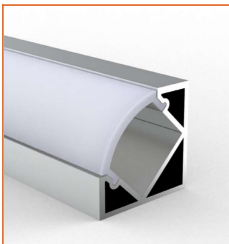
Mounting Options



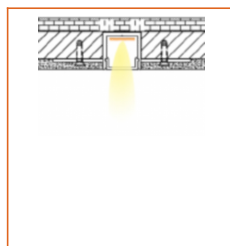
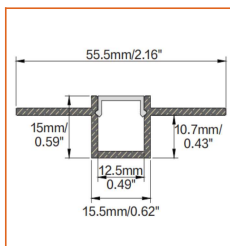
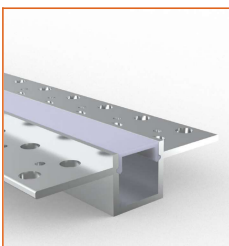
* Standard length is 3.28' / pcs.



* Standard length is 3.28' / pcs.



* Standard length is 3.28' / pcs.



* Standard length is 3.28' / pcs.

* For more options, please refer to "Beamever Profile Spec Sheet"

Name	Straight aluminum channel
Code	BE1205
Material	Alluminum
Mounting style	Surface mounted
Length	3.28' (1m)
Width	0.68" (17.3mm)
Height	0.28" (7mm)
Internal width	0.49" (12.5mm)

Name	Straight aluminum channel
Code	BE1204
Material	Alluminum
Mounting style	Recessed mounted
Length	3.28' (1m)
Width	0.68" (17.3mm)
Height	0.28" (7mm)
Internal width	0.49" (12.5mm)

Name	Straight aluminum channel
Code	BE1203
Material	Alluminum
Mounting style	Angled mounted
Length	3.28' (1m)
Width	0.71" (18.1mm)
Height	0.71" (18.1mm)
Internal width	0.49" (12.5mm)

Name	Straight aluminum channel
Code	BE5615
Material	Alluminum
Mounting style	Mud-in
Length	3.28' (1m)
Width	0.62" (15.5mm)
Height	0.59" (15mm)
Internal width	0.49" (12.5mm)

Driver Options

Code	Max Load	Input	Output	Dimmable	Class 2	Environment	Size (L*W*H)
LM-100-24-U2A2	100W	100-277VAC	24V	Yes	No	Dry	13.86 x 1.69 x 1.18 inch

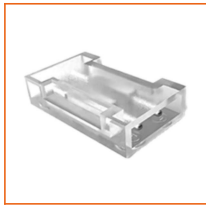
* Please refer to the spec sheet of each power supply for more detailed information

NOVA TAPE TW

Indoor · Dot-free · Tunable White



Accessories Options (Optional)



Name Strip to strip connector
Code NOVA20-STC-3P-10
Strip to strip connector 0.39" (10mm)
NOVA TAPE, IP20



Name Strip to strip jumper connector
Code NOVA20-STSJ-3P-10
Strip to strip jumper connector for 0.39" (10mm)
NOVA TAPE, IP20



Name Strip to cable connector
Code NOVA20-STC-3P-10
Strip to cable connector 0.39" (10mm)
NOVA TAPE, IP20



Name L-shaped connector
Code NOVA20-L-3P-10
L-shaped connector for 0.39" (10mm)
NOVA TAPE, IP20



Name L-shaped corner connector
Code NOVA20-LC-3P-10
Strip to cable connector 0.39" (10mm)
NOVA TAPE, IP20



Name R-shaped corner connector
Code NOVA20-RC-3P-10
R-shaped corner connector for 0.39" (10mm)
NOVA TAPE, IP20



Name Male & female connector
Code MFC-3P-20
Male and female connector with
11.81" cable, IP20, 3 pin



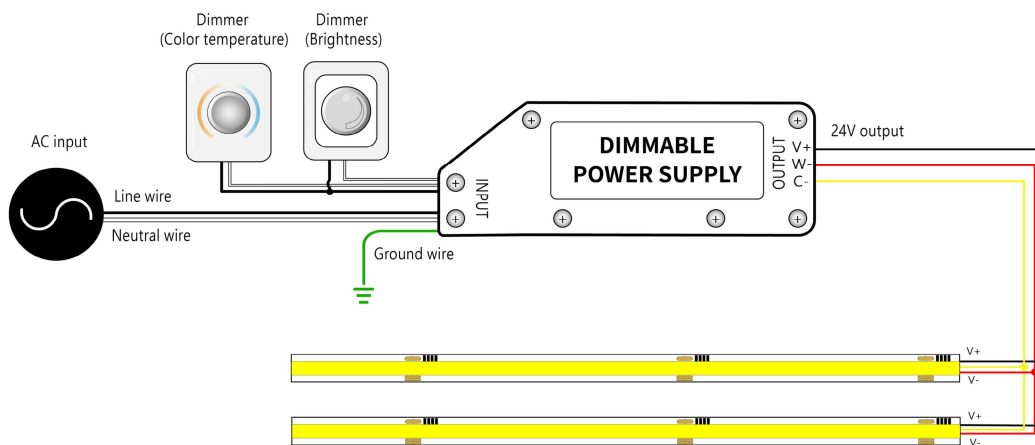
Name Male & female DC connector
Code MFC-DC-44
Male and female DC connector with
11.81" cable, IP44



Name VHB 3M adhesive tape
Code VHB
VHB 3M adhesive back tape, stronger
stickiness.

Wiring Diagram

Dimmable



* Dimmers need to be purchased separately.