

LINIO NEON 360°

Indoor/Outdoor · All-direction Bending · 360° Emitting

Beamever

Features

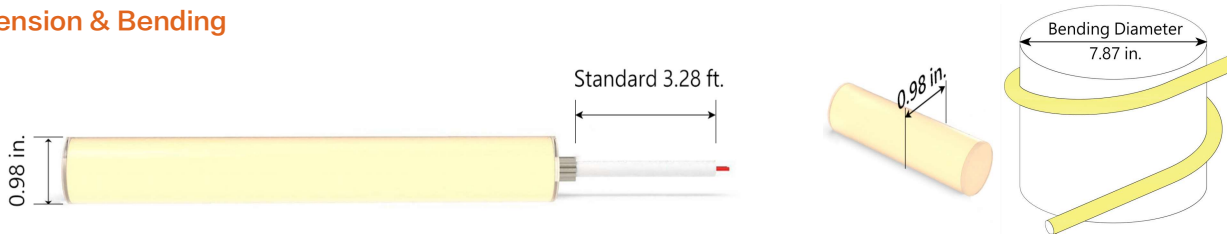
- Low voltage 24V DC
- Diameter of 25mm (0.98")
- Multiple mounting accessories for any design needs
- 360° emitting provides unparalleled creative possibilities
- High-grade Dow Corning silicone
- High-quality Lumileds LED chips



Fixture type	
Project name	
Project phase	
Date	



Dimension & Bending



Physical

Dimensions	0.98" (diameter)
Bend Direction	All-direction bending
Bend Diameter	7.87" (200mm)
Cutting Interval	1.97" (50mm)
Field Cuttable	No
Housing Material	Dow Corning
Housing Technique	Tubing
Body Color	White
Finish	Matte
Feed Entry	Front, side
Feed Length	Standard length 3.28'
End Cap	Injected (Factory made only)
Mounting	17 types of mounting accessories
Storage Temperature	-40~60°C (-40~140°F)
Ambient Temperature	-40~60°C (-40~140°F)@3.05W
Max. Production Length	16.4ft (5m)

Performance & Electrical

Voltage	24VDC (23.5Vmin, 24.5Vmax)
Beam Angle	360°
MacAdam	2 steps
Efficacy (lm/W)	56lm/W @4000K 3.05W
CRI	Ra90
Lumen Maintenance	> 54,000 hours
IP Rating	IP65
Resistance	UV, solvent, saltwater, flame
Dimming	Triac, ELV, PWM, 0-10V, DMX
Control Protocol	N/A
Warranty	5 years

Certification & Safety

Certifications	UL
Environment	Dry or damp locations

Lumen/ft	1.52W	3.05W
■ 2200K	68	129
■ 2400K	75	140
■ 2700K	84	158
■ 3000K	87	161
■ 3500K	93	183
■ 4000K	91	170
■ 6000K	92	179
Max. Run Length(ft)	16.4	16.4

*Other color temperatures and single chromatic colors customizable.

LINIO NEON 360°

Indoor/Outdoor · All-direction Bending · 360° Emitting



Order Code

Series	Temp./Color	Power	Feed Entry	Connector Wire	End Cap	Length (ft)
LN360	22=2200K 24=2400K 27=2700K 30=3000K 35=3500K 40=4000K 60=6000K	152=1.52W 305=3.05W	FC=Front + Closed SC=Side+ Closed *Only available for feed entry in one side	OW=Open wire 3.28' MLC=Male connector 0.98' FLC=Female connector 0.98'	IJ=Injected end cap (IP65) * End caps are added by default	Min. - 1.97" Max. - 16.4' Cut Inc. - 1.97"

Example: LN360-27-305-FC-OW-IJ-11'

* Customizable—Contact Beamever representatives

Feed Entry Options

Front feed entry (F)



Side feed entry (S)



Closed feed entry (C)

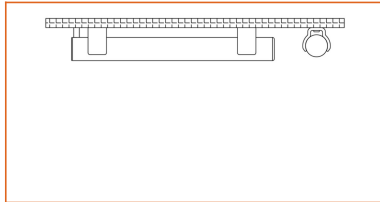


Mounting Options

Surface mount clear bracket - open clip

Code LN360-SFC-O

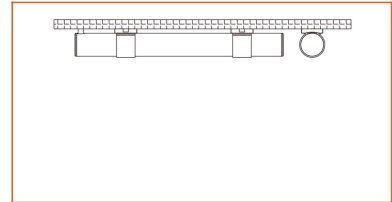
Mounting Type



Surface mount clear bracket - closed clip

Code LN360-SFC-C

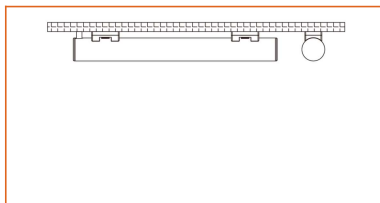
Mounting Type



Surface mount clear bracket - low profile clip

Code LN360-SFC-L

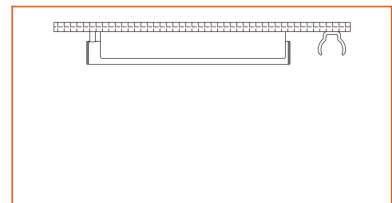
Mounting Type



Surface mount clear bracket - PC channel

Code LN360-SFC-PC

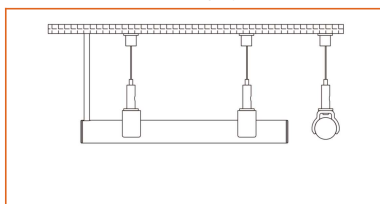
Mounting Type



Suspended mount clear bracket - open clip

Code LN360-SPC-O

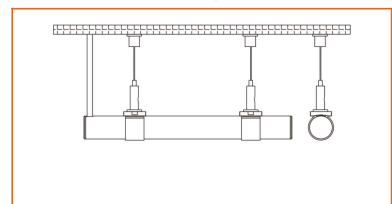
Mounting Type



Suspended mount clear bracket - closed clip

Code LN360-SPC-C

Mounting Type



LINIO NEON 360°

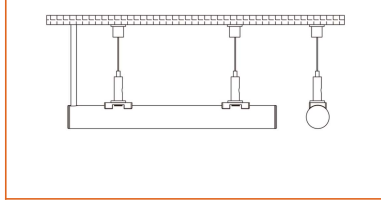
Indoor/Outdoor · All-direction Bending · 360° Emitting



Suspended mount clear bracket - low profile clip

Code LN360-SPC-L

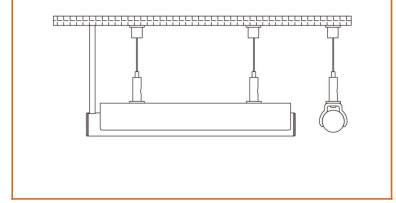
Mounting Type



Suspended mount clear bracket - PC channel

Code LN360-SPC-PC

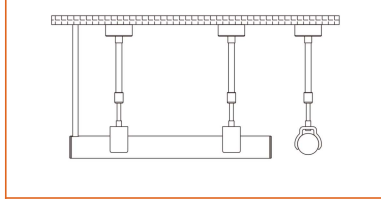
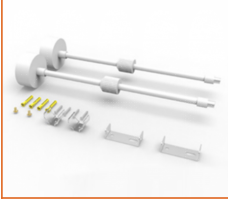
Mounting Type



Telescoping clear bracket - open clip (Length: 50-99cm)

Code LN360-TLC-O

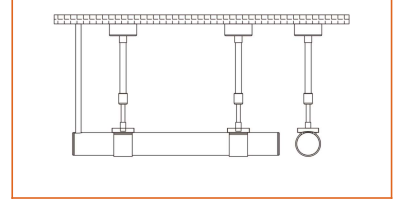
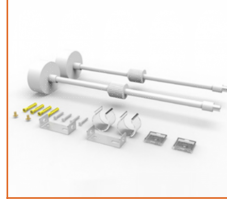
Mounting Type



Telescoping clear bracket - closed clip (Length: 50-99cm)

Code LN360-TLC-C

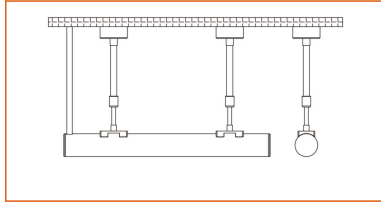
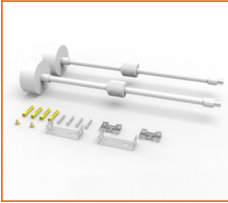
Mounting Type



Telescoping clear bracket - low profile clip (Length: 50-99cm)

Code LN360-TLC-L

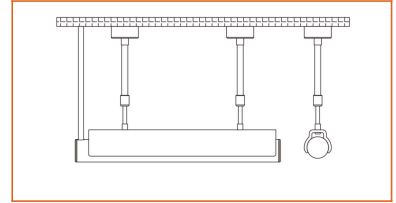
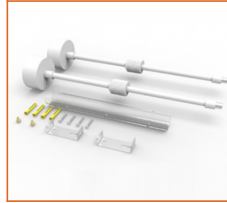
Mounting Type



Telescoping clear bracket - PC channel (Length: 50-99cm)

Code LN360-TLC-PC

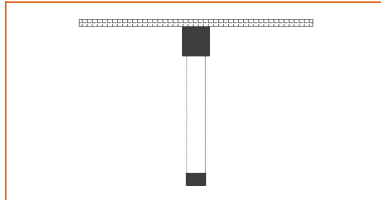
Mounting Type



Vertical metal flush surface mount bracket - black

Code LN360-VB

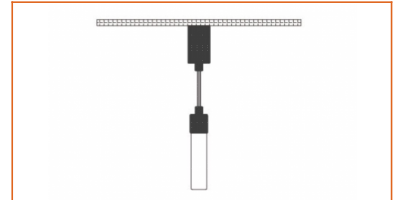
Mounting Type



Vertical pendant suspended mount bracket - black

Code LN360-VSB

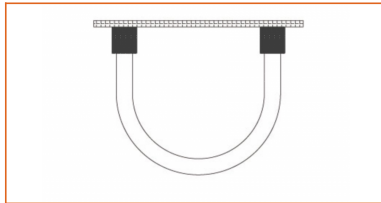
Mounting Type



U-shaped metal flush mounting bracket - black

Code LN360-UB

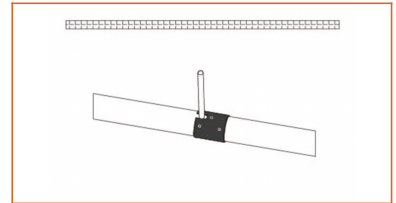
Mounting Type



Metal joiner bracket - black (side cable entry only)

Code LN360-JNB-S

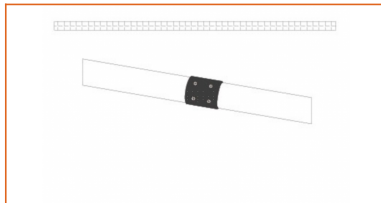
Mounting Type



Metal joiner bracket - black (closed end cap)

Code LN360-JNB-C

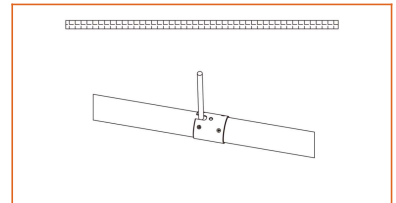
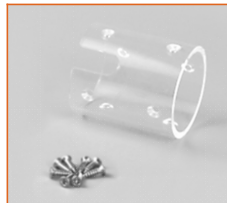
Mounting Type



Joiner bracket - clear (side cable entry only)

Code LN360-JNC-S

Mounting Type



LINIO NEON 360°

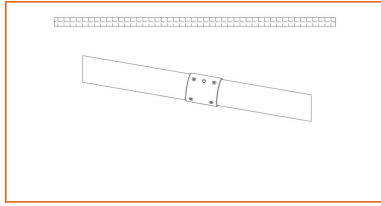
Indoor/Outdoor · All-direction Bending · 360° Emitting



Joiner bracket - clear (closed end cap)

Code LN360-JNC-C

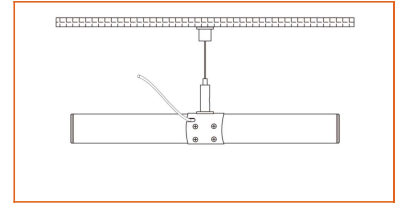
Mounting Type



Suspended joiner bracket - clear (side cable entry only)

Code LN360-JSC-S

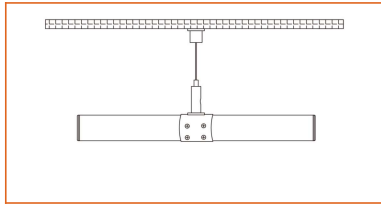
Mounting Type



Suspended joiner bracket - clear (closed end cap)

Code LN360-JSC-C

Mounting Type



Driver Options

Code	Max Load	Input	Output	Dimmable	Class 2	Environment	Size (L*W*H)
Non Dimmable							
KV-24030-ASW	30W	100-277VAC	24V	No	Yes	Dry/damp	6.10*2.12*0.78 inch
KV-24060-ASW	60W	100-277VAC	24V	No	Yes	Dry/damp	7.00*2.40*0.94 inch
KV-24096-ASW	96W	100-277VAC	24V	No	Yes	Dry/damp/wet	9.05*2.75*1.69 inch
KV-24150-ASW	150W	100-277VAC	24V	No	No	Dry/damp/wet	10.07*3.07*1.85 inch
KV-24200-ASW	200W	100-277VAC	24V	No	No	Dry/damp/wet	10.07*3.07*1.85 inch
KV-24300-ASW	300W	100-277VAC	24V	No	No	Dry/damp/wet	10.86*3.07*1.85 inch
Phase cut /Triac Dimmable							
KVF-24030-TDW	30W	100-277VAC	24V	Yes	Yes	Dry/damp	6.10*2.12*0.78 inch
KVF-24060-TDW	60W	100-277VAC	24V	Yes	Yes	Dry/damp	7*2.4*0.94 inch
KVF-24096-TDW	96W	100-277VAC	24V	Yes	Yes	Dry/damp/wet	9.05*2.75*1.69 inch
KVF-24150-TDW	150W	100-277VAC	24V	Yes	No	Dry/damp/wet	10*3.07*1.85 inch
KVF-24200-TDW	200W	100-277VAC	24V	Yes	No	Dry/damp/wet	10*3.07*1.85 inch
KVF-24300-TDW	300W	100-277VAC	24V	Yes	No	Dry/damp/wet	10.87*3.07*1.85 inch
4 in 1 Dimmable (0-10V/1-10V/Potentiometer/10V PWM)							
KVD-24030-DIM	30W	100-277VAC	24V	Yes	Yes	Dry/damp	6.10*2.12*0.78 inch
KVD-24060-DIM	60W	100-277VAC	24V	Yes	Yes	Dry/damp	7.01*2.40*0.94 inch
KVD-24096-DIM	96W	100-277VAC	24V	Yes	Yes	Dry/damp/wet	9.05*2.75*1.69 inch
KVD-24150-DIM	150W	100-277VAC	24V	Yes	No	Dry/damp/wet	10.08*3.07*1.85 inch
KVD-24200-DIM	200W	100-277VAC	24V	Yes	No	Dry/damp/wet	13.38*11.02*7.28 inch
KVD-24300-DIM	300W	100-277VAC	24V	Yes	No	Dry/damp/wet	10.87*3.07*1.89 inch

LINIO NEON 360°

Indoor/Outdoor · All-direction Bending · 360° Emitting



5 in 1 Dimmable (Triac/0-10V/1-10V/Potentiometer/10V PWM)

KVG-24030-DW	30W	100-277VAC	24V	Yes	Yes	Dry/damp	6.1*2.13*0.79 inch
KVG-24060-DW	60W	100-277VAC	24V	Yes	Yes	Dry/damp	7.01*2.41*0.94 inch
KVG-24096-DW	96W	100-277VAC	24V	Yes	Yes	Dry/damp/wet	9.06*2.76*1.69 inch
KVG-24150-DW	150W	100-277VAC	24V	Yes	No	Dry/damp/wet	10.08*3.07*1.85 inch
KVG-24200-DW	200W	100-277VAC	24V	Yes	No	Dry/damp/wet	10.08*3.07*1.85 inch
KVG-24300-DW	300W	100-277VAC	24V	Yes	No	Dry/damp/wet	10.87*3.07*1.89 inch

* Please refer to the spec sheet of each power supply for more detailed information

* KVF, KVD, KVG series are available in junction box enclosure, you can select it by adding "J" at the end of the driver code, e.g. KVF-24030-TDWJ, and refer to its standalone spec sheet on our website.

Accessories Options (Optional, purchase for extra)



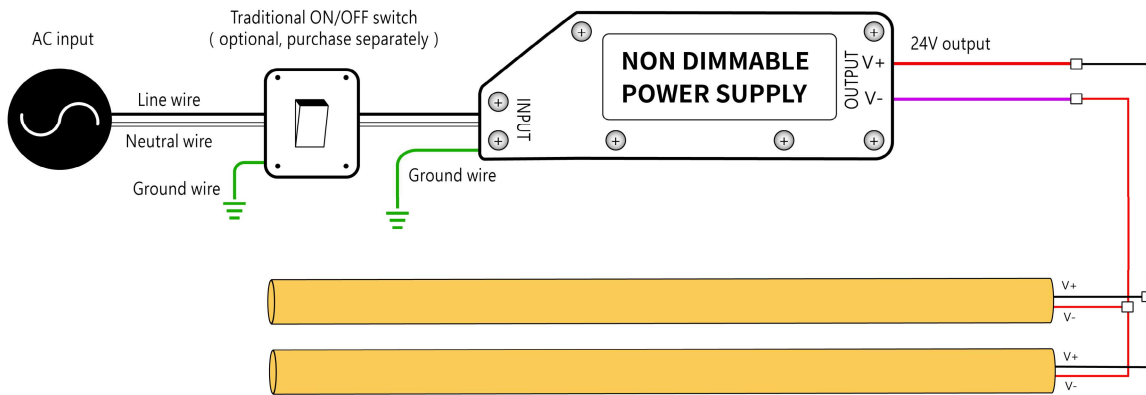
Name Male and female connectors

Code MFC-2P-67

Male and female connectors with 11.81" cable, IP67, 2 pin

Wiring Diagram

Non Dimmable



Dimmable

