

LINIO NEON 1220 SV TW

Outdoor · Horizontal Bending · Field Cuttable

Beamever

Features

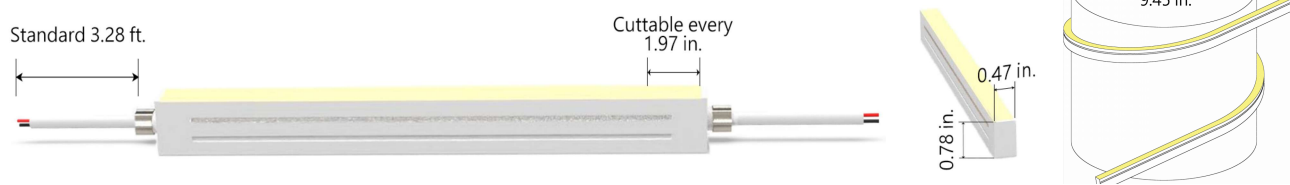
- Field cuttable & joinable
- Low voltage 24V DC
- Tunable white, CCT changing from 2700K to 5300K
- IP67 rated, ideal for indoor and outdoor uses
- UV stable without yellowing or cracking over time
- 5 years warranty



Fixture type	
Project name	
Project phase	
Date	



Dimension & Bending



Physical

Dimensions	0.47" x 0.78" (width x height)
Bend Direction	Horizontal bending
Bend Diameter	9.45" (240mm)
Cutting Interval	1.97" (50mm)
Field Cuttable	Yes
Housing Material	Dow Corning
Housing Technique	Co-extrusion
Body Color	White
Finish	Matt
Feed Entry	Front, side, bottom
Feed Length	Standard length 3.28'
End Cap	Injected (Factory made only)
Mounting	Clips or channel (rigid or bendable)
Storage Temperature	-40°C(-40°F) to 60°C (140°F)
Ambient Temperature	-40°C(-40°F) to 45°C (113°F)@4.57W
Max. Production Length	98.43ft (30m)

Performance & Electrical

Voltage	24VDC (23.5Vmin, 24.5Vmax)
Beam Angle	120°
MacAdam	3 steps
Efficacy (lm/W)	35lm/W @2700K+5300K 4.57W
CRI	Ra80
Lumen Maintenance	> 54,000 hours
IP Rating	IP67
Resistance	UV, solvent, saltwater, flame
Dimming	Triac, ELV, PWM, 0-10V, DMX, SPI
Control Protocol	N/A
Warranty	5 years

Certification & Safety

Certifications	UL
Environment	Dry, damp or wet locations

Lumen/ft	4.57W
■ 2700K	82
■ 5300K	82
■ 2700K+5300K	159
Max. Run Length(ft)	16.4

LINIO NEON 1220 SV TW

Outdoor · Horizontal Bending · Field Cuttable



Order Code

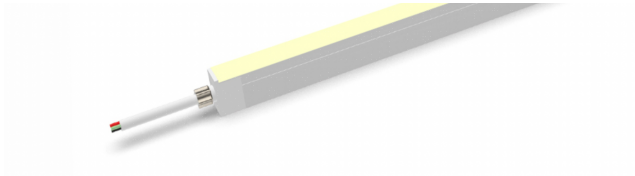
Series	Temp./Color	Power	Feed Entry	Connector Wire	End Cap	Length (ft)
LN1220SV	2753=2700K+53 00K	457=4.57W	FF =Front + Front BB =Bottom + Bottom LSLS =Left Side + Left Side RSRS =Right Side + Right Side FC =Front + Closed FB =Front + Bottom FLS =Front + Left Side FRS =Front + Right Side BC =Bottom + Closed BLS =Bottom + Left Side BRS =Bottom + Right side LSC =Left side + Closed RSC =Right side + Closed LSRS =Left side + Right side	OW =Open wire 3.28' MFC =Male & female connector 0.98'	IJ =Injected end cap (IP67) SEC =Silicone end cap (IP67) MEC =Mechanical end cap (IP67) * End caps are added by default * MEC will reduce max. run length, consult Beamever for specific data	Min. - 1.97" Max. - 98.4' Cut Inc. - 1.97"

Example: LN1220SV-2753-457-FF-OW-IJ-11'

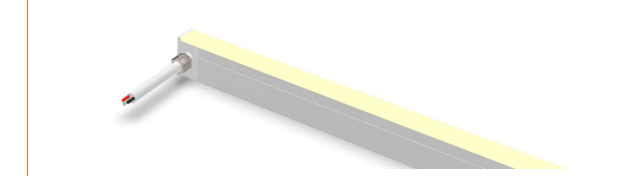
* Customizable—Contact Beamever representatives

Feed Entry Options

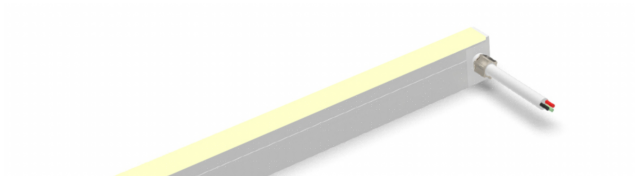
Front feed entry (F)



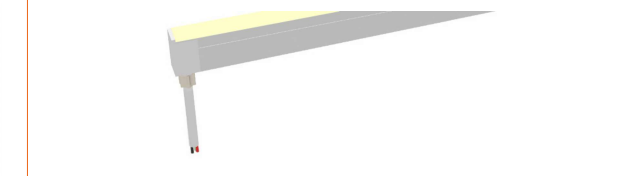
Left side feed entry (LS)



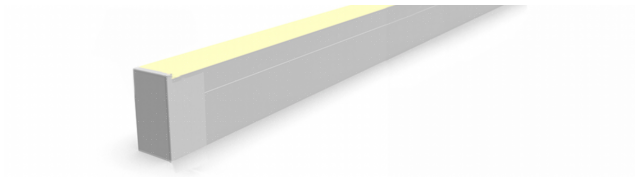
Right side feed entry (RS)



Bottom feed entry (B)



Closed feed entry (C)

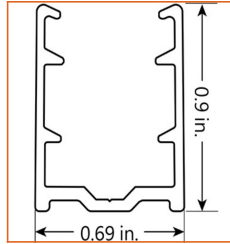
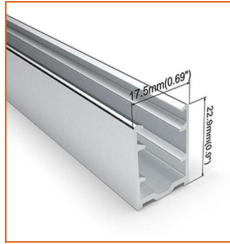


LINIO NEON 1220 SV TW

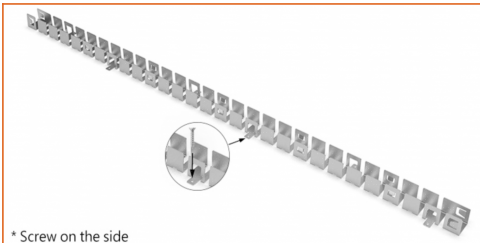
Outdoor · Horizontal Bending · Field Cuttable



Mounting Options

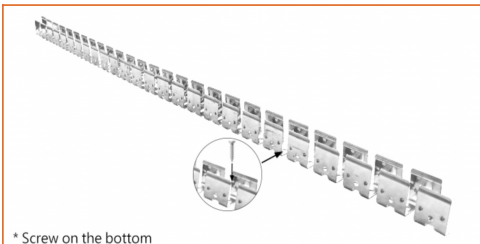
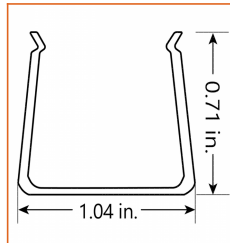


* Standard length is 3.28' / pcs.



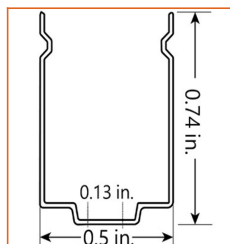
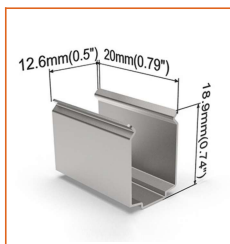
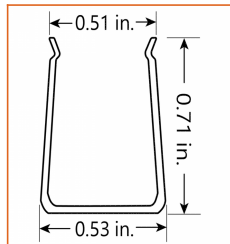
* Screw on the side

* Standard length is 1.64' / pcs.

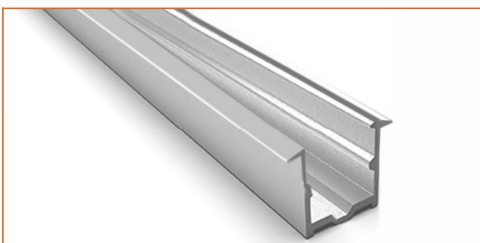


* Screw on the bottom

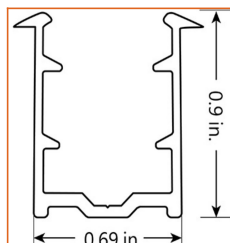
* Standard length is 3.28' / pcs.



* Recommend use 1 mounting clip for 1' of neon.



* Standard length is 3.28' / pcs.



Name	Straight aluminum channel
Code	LN1220-SC
Material	Aluminum
Mounting style	Surface mounted
Length	3.28' (1m)
Width	0.69" (17.5mm)
Height	0.9" (22.9mm)
Internal width	/

Name	Bendable channel (Side screw)
Code	LN1220-BC-S
Material	Stainless Steel
Mounting style	Surface mounted
Length	1.64' (0.5m)
Width	1.04" (26.4mm)
Height	0.71" (18mm)
Internal Width	/

Name	Bendable channel (Bottom screw)
Code	LN1220-BC-B
Material	Stainless Steel
Mounting style	Surface mounted
Length	3.28' (1m)
Width	0.53" (13.5mm)
Height	0.71" (18mm)
Internal Width	0.51" (12.9mm)

Name	Mounting clip
Code	LN1220-CL
Material	Stainless Steel
Mounting style	Surface mounted
Length	0.79" (20mm)
Width	0.5" (12.6mm)
Height	0.74" (18.9mm)
Internal Width	/

Name	Recessed straight channel
Code	LN1220-RSC
Material	Aluminum
Mounting style	Recessed mounted
Length	3.28' (1m)
Width	0.69" (17.5mm)
Height	0.9" (22.9mm)
Internal width	/

Driver Options

Code	Max Load	Input	Output	Dimmable	Class 2	Environment	Size (L*W*H)
LM-100-24-U2A2	100W	100-277VAC	24V	Yes	No	Dry	13.86 x 1.69 x 1.18 inch

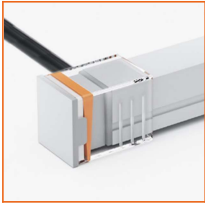
* Please refer to the spec sheet of each power supply for more detailed information

Accessories Options (Optional, purchase for extra)

	<p>Name Silicone closed end cap</p> <p>Code LN1220-SEC-C</p> <p>Closed silicone end cap</p>		<p>Name Silicone front end cap</p> <p>Code LN1220-SEC-F-3P</p> <p>Silicone end cap front entry with 11.81" black cable, 3 Pin</p>
	<p>Name Silicone side end cap</p> <p>Code LN1220-SEC-S-3P</p> <p>Silicone end cap side entry with 11.81" black cable, 3 Pin</p>		<p>Name Silicone bottom end cap</p> <p>Code LN1220-SEC-B-3P</p> <p>Silicone end cap bottom entry with 11.81" black cable, 3 Pin</p>
	<p>Name Mechanical end cap (G1)</p> <p>Code LN1220-MEC1-C</p> <p>Mechanical closed end cap with screws (G1)</p>		<p>Name Mechanical end cap (G1)</p> <p>Code LN1220-MEC1-F-3P</p> <p>Mechanical end cap with screws (G1), front entry with 11.81" black cable, 3 pin</p>
	<p>Name Mechanical end cap (G1)</p> <p>Code LN1220-MEC1-LS-3P</p> <p>Mechanical end cap with screws (G1), left side entry with 11.81" black cable, 3 pin</p>		<p>Name Mechanical end cap (G1)</p> <p>Code LN1220-MEC1-RS-3P</p> <p>Mechanical end cap with screws (G1), right side entry with 11.81" black cable, 3 pin</p>
	<p>Name Mechanical end cap (G1)</p> <p>Code LN1220-MEC1-B-3P</p> <p>Mechanical end cap with screws (G1), bottom entry with 11.81" black cable, 3 pin</p>		<p>Name Mechanical end cap (G3)</p> <p>Code LN1220-MEC3-C</p> <p>Screw-free mechanical closed end cap (G3)</p>
	<p>Name Mechanical end cap (G3)</p> <p>Code LN1220-MEC3-F-3P</p> <p>Screw-free mechanical end cap (G3), front entry with 11.81" black cable, 3 pin</p>		<p>Name Mechanical end cap (G3)</p> <p>Code LN1220-MEC3-LS-3P</p> <p>Screw-free mechanical end cap (G3), left side entry with 11.81" black cable, 3 pin</p>

LINIO NEON 1220 SV TW

Outdoor · Horizontal Bending · Field Cuttable



Name Mechanical end cap (G3)
Code LN1220-MEC3-RS-3P
Screw-free mechanical end cap (G3), right side entry with 11.81" black cable, 3 pin



Name Mechanical end cap (G3)
Code LN1220-MEC3-B-3P
Screw-free mechanical end cap (G3), bottom entry with 11.81" black cable, 3 pin



Name Male and female connectors
Code MFC-3P-67
Male and female connectors with 11.81" white cable, 3 pin



Name Extension connectors
Code ETC-3P-67-1M
Extension Male and female connectors with 3.28ft white cable, 3 pin



Name Extension connectors
Code ETC-3P-67-5M
Extension Male and female connectors with 16.4ft white cable, 3 pin



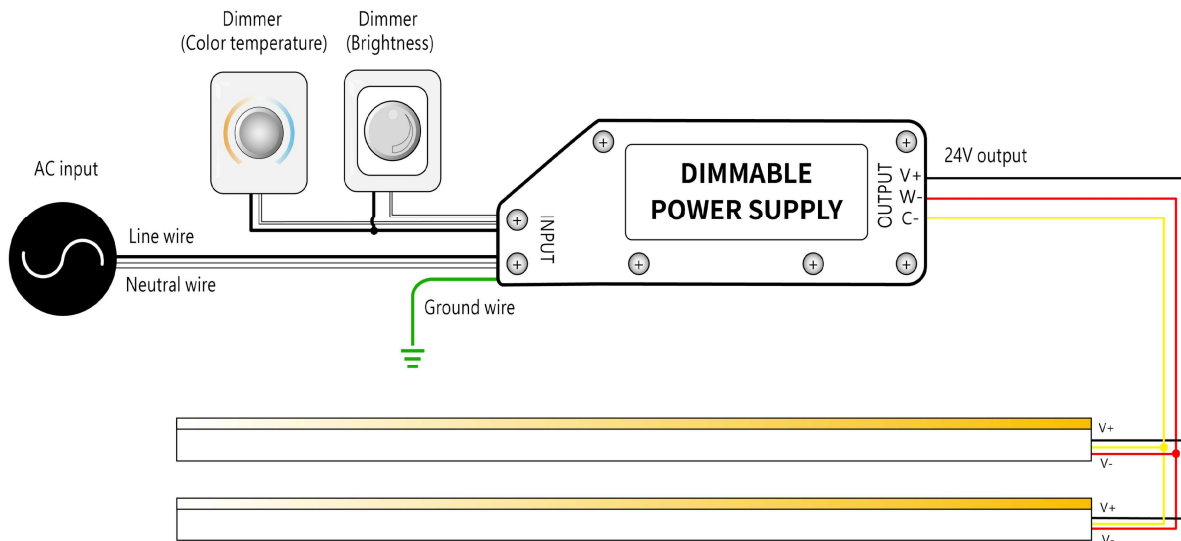
Name Silicone glue
Code SG
Silicone glue



Name Suspension cord
Code LN1220-SPC
Use with the channel

Wiring Diagram

Dimmable



* Dimmers need to be purchased separately.