

# LINIO NEON 1212 TV RGB

Outdoor · Vertical Bending · Field Cuttable

# Beamever

## Features

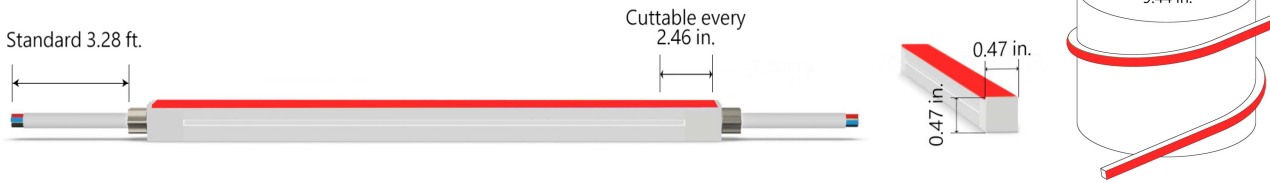
- Field cuttable & joinable
- Low voltage 24V DC
- RGB allows for versatile lighting effects
- IP67 rated, ideal for indoor and outdoor uses
- UV stable without yellowing or cracking over time
- 5 years warranty



Fixture type	
Project name	
Project phase	
Date	



## Dimension & Bending



## Physical

Dimensions	0.47" x 0.47" (width x height)
Bend Direction	Vertical bending
Bend Diameter	9.44" (240mm)
Cutting Interval	2.46" (62.5mm)
Field Cuttable	Yes
Housing Material	Dow Corning
Housing Technique	Co-extrusion
Body Color	White
Finish	Matte
Feed Entry	Front, side, bottom
Feed Length	Standard length 3.28'
End Cap	Injected (Factory made only)
Mounting	Clips or channel (rigid)
Storage Temperature	-40~60°C (-40~140°F)
Ambient Temperature	-40~60°C (-40~140°F)@3.05W
Max. Production Length	98.43ft (30m)

## Performance & Electrical

Voltage	24VDC (23.5Vmin, 24.5Vmax)
Beam Angle	120°
MacAdam	3 steps
Efficacy (lm/W)	24.2lm/W @3.05W
CRI	N/A
Lumen Maintenance	> 30,000 hours
IP Rating	IP67
Resistance	UV, solvent, saltwater, flame
Dimming	DMX
Control Protocol	N/A
Warranty	5 years

## Certification & Safety

Certifications	UL
Environment	Dry, damp or wet locations

<b>Lumen/ft</b>	<b>3.05W</b>
■ R	17
■ G	49
■ B	10
■ RGB	74
Max. Run Length(ft)	16.4

# LINIO NEON 1212 TV RGB

Outdoor · Vertical Bending · Field Cuttable



## Order Code

Series	Temp./Color	Power	Feed Entry	Connector Wire	End Cap	Length (ft)
LN1212TV	RGB	305=3.05W	<b>FF</b> =Front + Front <b>BB</b> =Bottom + Bottom <b>LSLS</b> =Left Side + Left Side <b>RSRS</b> =Right Side + Right Side <b>FC</b> =Front + Closed <b>FB</b> =Front + Bottom <b>FLS</b> =Front + Left Side <b>FRS</b> =Front + Right Side <b>BC</b> =Bottom + Closed <b>BLS</b> =Bottom + Left Side <b>BRS</b> =Bottom + Right side <b>LSC</b> =Left side + Closed <b>RSC</b> =Right side + Closed <b>LSRS</b> =Left side + Right side	<b>OW</b> =Open wire 3.28' <b>MFC</b> =Male & female connector 0.98'	<b>IJ</b> =Injected end cap (IP67) *Only available for front/bottom/closed entry <b>SEC</b> =Silicone end cap (IP67) <b>MEC</b> =Mechanical end cap (IP67) * End caps are added by default * MEC will reduce max. run length, consult Beamever for specific data	Min. - 2.46' Max. - 98.4' Cut Inc. - 2.46"

Example: LN1212TV-RGB-305-FF-OW-IJ-11'

\* Customizable—Contact Beamever representatives

## Feed Entry Options

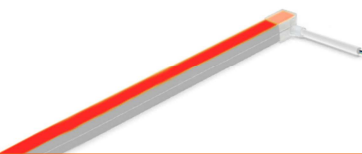
Front feed entry (F)



Left side feed entry (LS)



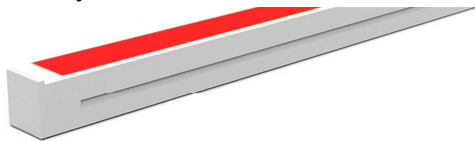
Right side feed entry (RS)



Bottom feed entry (B)



Closed feed entry (C)

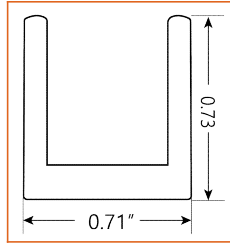
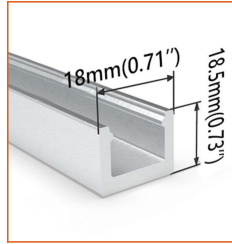


# LINIO NEON 1212 TV RGB

Outdoor · Vertical Bending · Field Cuttable

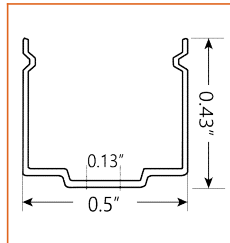
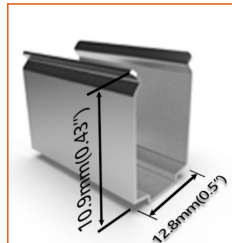


## Mounting Options



\* Standard length is 3.28' / pcs.

Name	Straight Aluminum channel
Code	LN1212-SC
Material	Aluminum
Mounting style	Surface mounted
Length	3.28' (1m)
Width	0.71" (18mm)
Height	0.73" (18.5mm)
Internal width	/



\* Recommend use 1 mounting clip for 1' of neon.

Name	Mounting clip
Code	LN1212-CL
Material	Stainless Steel
Mounting style	Surface mounted
Length	0.3" (7.6mm)
Width	0.5" (12.8mm)
Height	0.43" (10.9mm)
Internal Width	/

## Driver Options

Code	Max Load	Input	Output	Dimmable	Class 2	Environment	Size (L*W*H)
<b>Non Dimmable</b>							
KV-24030-ASW	30W	100-277VAC	24V	No	Yes	Dry/damp	6.10*2.12*0.78 inch
KV-24060-ASW	60W	100-277VAC	24V	No	Yes	Dry/damp	7.00*2.40*0.94 inch
KV-24096-ASW	96W	100-277VAC	24V	No	Yes	Dry/damp/wet	9.05*2.75*1.69 inch
KV-24150-ASW	150W	100-277VAC	24V	No	No	Dry/damp/wet	10.07*3.07*1.85 inch
KV-24200-ASW	200W	100-277VAC	24V	No	No	Dry/damp/wet	10.07*3.07*1.85 inch
KV-24300-ASW	300W	100-277VAC	24V	No	No	Dry/damp/wet	10.86*3.07*1.85 inch
<b>DMX512 Dimmable</b>							
KVX-24096-3C-A	96W	100-277VAC	24V	Yes	Yes	Dry/damp/wet	9.05*3.07*0.98 inch
KVX-24150-3C-A	150W	100-277VAC	24V	Yes	No	Dry/damp/wet	10.9*3.07*0.98 inch
KVX-24200-3C-A	200W	100-277VAC	24V	Yes	No	Dry/damp/wet	10.9*3.07*0.98 inch
KVX-24300-3C-A	300W	100-277VAC	24V	Yes	No	Dry/damp/wet	11.85*3.07*0.98 inch

\* Please refer to the spec sheet of each power supply for more detailed information

## DMX Decoder Options

Code	Description
LT-903	3 channels output, up to 576W output power
LT-912	12 channels output, up to 1152W output power
LT-924	24 channels output, up to 1728W output power

\* Please refer to the spec sheet of each decoder for more detailed information

## Controller Options

Code	Description
DINA-DR micro	DMX 60 channels, DMX Stand Alone controller with 10 scenes, USB connectivity for programming
SLESA-U9	DMX 256 channels, USB connection, stand alone mode with 1 area and 20 scenes
STICK-GA2	DMX 512 channels, ready to use (pre-loaded with 8 scenes and 170 RGB fixtures)
STICK-CW4	DMX 1024 channels, up to 36 scenes stored and directly recalled via 6 touch sensitive buttons

\* Please refer to the spec sheet of each controller for more detailed information

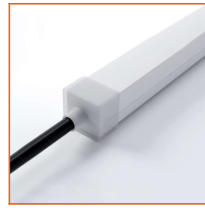
Accessories Options (Optional, purchase for extra)



Name Silicone closed end cap

Code LN1212-SEC-C

Closed silicone end cap



Name Silicone front end cap

Code LN1212-SEC-F-4P

Silicone end cap front entry with 11.81" 4 pin cable



Name Silicone side end cap

Code LN1212-SEC-S-4P

Silicone end cap side entry with 11.81" 4 pin cable



Name Silicone bottom end cap

Code LN1212-SEC-B-4P

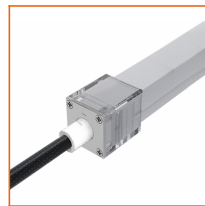
Silicone end cap bottom entry with 11.81" 4 pin cable



Name Mechanical end cap (G1)

Code LN1212-MEC1-C

Mechanical closed end cap with screws (G1)



Name Mechanical end cap (G1)

Code LN1212-MEC1-F-4P

Mechanical end cap with screws (G1), front entry with 11.81" black cable, 4 pin



Name Mechanical end cap (G1)

Code LN1212-MEC1-LS-4P

Mechanical end cap with screws (G1), left side entry with 11.81" black cable, 4 pin



Name Mechanical end cap (G1)

Code LN1212-MEC1-RS-4P

Mechanical end cap with screws (G1), right side entry with 11.81" black cable, 4 pin



Name Mechanical end cap (G1)

Code LN1212-MEC1-B-4P

Mechanical end cap with screws (G1), bottom entry with 11.81" black cable, 4 pin



Name Mechanical end cap (G3)

Code LN1212-MEC3-C

Screw-free mechanical closed end cap (G3)



Name Mechanical end cap (G3)

Code LN1212-MEC3-F-4P

Screw-free mechanical end cap (G3), front entry with 11.81" black cable, 4 pin



Name Mechanical end cap (G3)

Code LN1212-MEC3-LS-4P

Screw-free mechanical end cap (G3), left side entry with 11.81" black cable, 4 pin



Name Mechanical end cap (G3)

Code LN1212-MEC3-RS-4P

Screw-free mechanical end cap (G3), right side entry with 11.81" black cable, 4 pin



Name Mechanical end cap (G3)

Code LN1212-MEC3-B-4P

Screw-free mechanical end cap (G3), bottom entry with 11.81" black cable, 4 pin

# LINIO NEON 1212 TV RGB

Outdoor · Vertical Bending · Field Cuttable



Name Male and female connectors  
Code MFC-4P-67  
Male and female connectors with 11.81" white cable, 4 pin



Name Extension connectors  
Code ETC-4P-67-1M  
Extension Male and female connectors with 3.28ft white cable, 4 pin



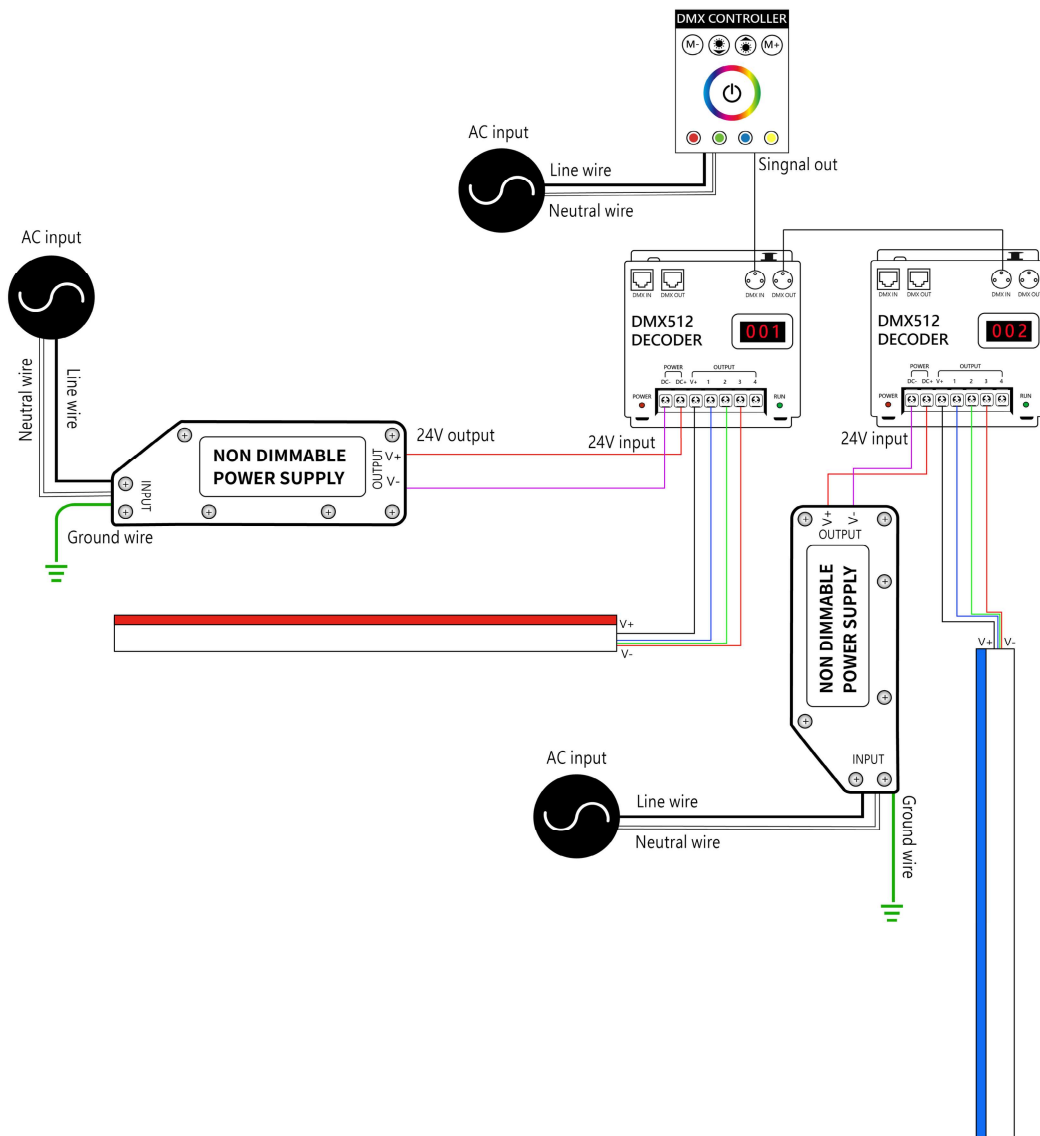
Name Extension connectors  
Code ETC-4P-67-5M  
Extension Male and female connectors with 16.4ft white cable, 4 pin



Name Silicone glue  
Code SG  
Silicone glue

## Wiring Diagram

### Nicolaudie DMX Control System



# LINIO NEON 1212 TV RGB

Outdoor · Vertical Bending · Field Cuttable



## DMX Driver System

