

LINIO NEON 1220 SV

Outdoor · Horizontal Bending · Field Cuttable

Beamever

Features

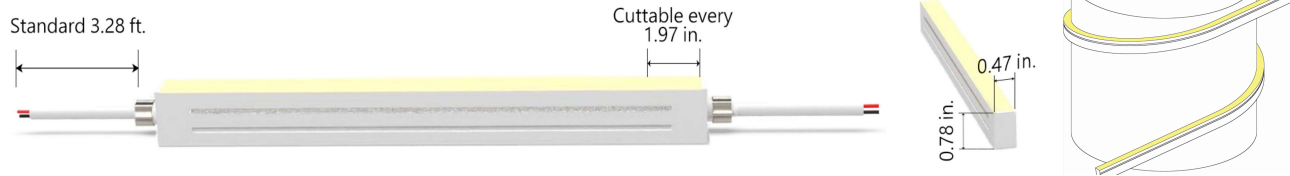
- Field cuttable & joinable
- Low voltage 24V DC
- All dimming protocols dimmable
- Max run length up to 88ft from single power feed
- IP67 rated, ideal for indoor and outdoor uses
- UV stable without yellowing or cracking over time



| | |
|---------------|--|
| Fixture type | |
| Project name | |
| Project phase | |
| Date | |



Dimension & Bending



Physical

| | |
|------------------------|--------------------------------------|
| Dimensions | 0.47" x 0.78" (width x height) |
| Bend Direction | Horizontal bending |
| Bend Diameter | 9.45" (240mm) |
| Cutting Interval | 1.97" (50mm) |
| Field Cuttable | Yes |
| Housing Material | Dow Corning |
| Housing Technique | Co-extrusion |
| Body Color | White |
| Finish | Matt |
| Feed Entry | Front, side, bottom |
| Feed Length | Standard length 3.28' |
| End Cap | Injected (Factory made only) |
| Mounting | Clips or channel (rigid or bendable) |
| Storage Temperature | -40°C(-40°F) to 60°C (140°F) |
| Ambient Temperature | -40°C(-40°F) to 60°C (140°F)@3.05W |
| Max. Production Length | 98.43ft (30m) |

Performance & Electrical

| | |
|-------------------|----------------------------------|
| Voltage | 24VDC (23.5Vmin, 24.5Vmax) |
| Beam Angle | 120° |
| MacAdam | 2 steps |
| Efficacy (lm/W) | 30lm/W @4000K 1.52W |
| CRI | Ra94 |
| Lumen Maintenance | > 54,000 hours |
| IP Rating | IP67 |
| Resistance | UV, solvent, saltwater, flame |
| Dimming | Triac, ELV, PWM, 0-10V, DMX, SPI |
| Control Protocol | N/A |
| Warranty | 5 years |

Certification & Safety

| | |
|----------------|----------------------------|
| Certifications | UL |
| Environment | Dry, damp or wet locations |

| Lumen/ft | 1.52W | 3.05W | 4.57W |
|---------------------|-------|-------|-------|
| ■ 2200K | 37 | 81 | 108 |
| ■ 2400K | 40 | 88 | 118 |
| ■ 2700K | 45 | 99 | 133 |
| ■ 3000K | 48 | 105 | 150 |
| ■ 3500K | 49 | 108 | 152 |
| ■ 4000K | 46 | 105 | 145 |
| ■ 5300K | 47 | 106 | 149 |
| Max. Run Length(ft) | 88.56 | 55.76 | 45.92 |

LINIO NEON 1220 SV

Outdoor · Horizontal Bending · Field Cuttable



Order Code

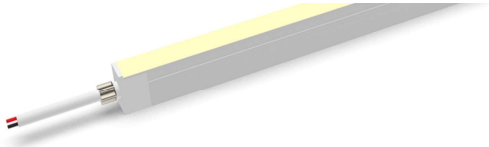
| Series | Temp./Color | Power | Feed Entry | Connector Wire | End Cap | Length (ft) |
|----------|--|-------------------------------------|--|---|--|--|
| LN1220SV | 22=2200K 24=2400K 27=2700K 30=3000K 35=3500K 40=4000K 53=5300K | 152=1.52W 305=3.05W 457=4.57W | FF=Front + Front BB=Bottom + Bottom LSLS=Left Side + Left Side RSRS=Right Side + Right Side FC=Front + Closed FB=Front + Bottom FLS=Front + Left Side FRS=Front + Right Side BC=Bottom + Closed BLS=Bottom + Left Side BRS=Bottom + Right side LSC=Left side + Closed RSC=Right side + Closed LSRS=Left side + Right side | OW=Open wire 3.28' MFC=Male & female connector 0.98' | IJ=Injected end cap (IP67) SEC=Silicone end cap (IP67) MEC=Mechanical end cap (IP67) * End caps are added by default * MEC will reduce max. run length, consult Beamever for specific data | Min. - 1.97" Max. - 98.4' Cut Inc. - 1.97" |

Example: LN1220SV-30-305-FF-OW-IJ-11'

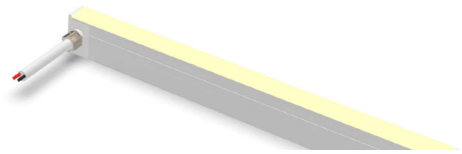
* Customizable—Contact Beamever representatives

Feed Entry Options

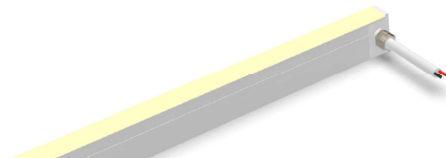
Front feed entry (F)



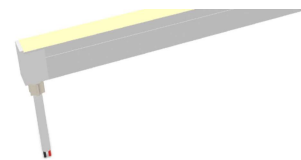
Left side feed entry (LS)



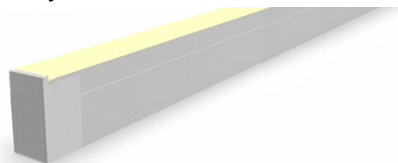
Right side feed entry (RS)



Bottom feed entry (B)



Closed feed entry (C)

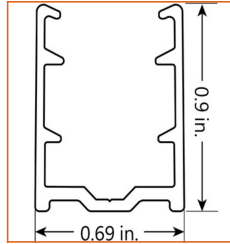
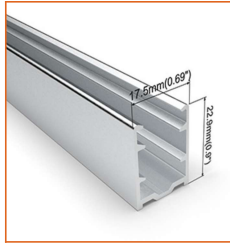


LINIO NEON 1220 SV

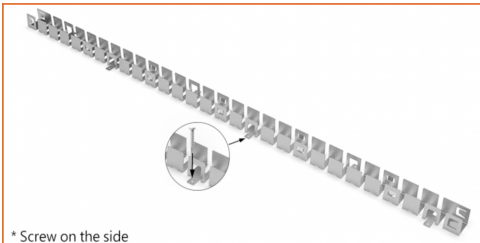
Outdoor · Horizontal Bending · Field Cuttable



Mounting Options

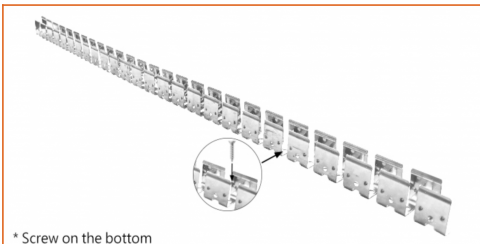
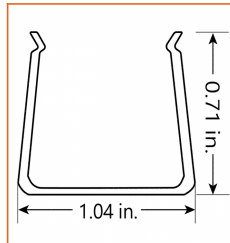


* Standard length is 3.28' / pcs.



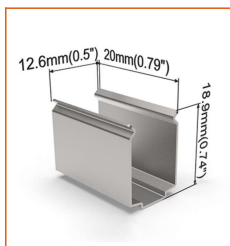
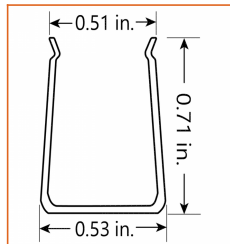
* Screw on the side

* Standard length is 1.64' / pcs.

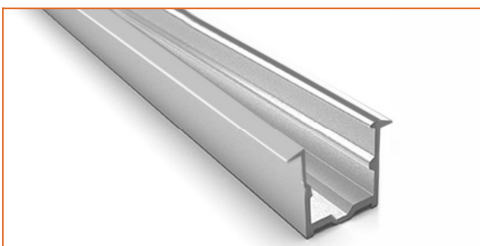
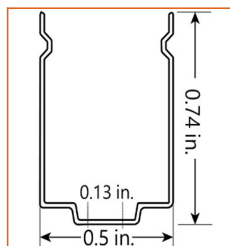


* Screw on the bottom

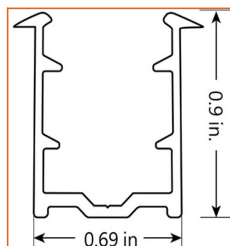
* Standard length is 3.28' / pcs.



* Recommend use 1 mounting clip for 1' of neon.



* Standard length is 3.28' / pcs.



| | |
|----------------|---------------------------|
| Name | Straight aluminum channel |
| Code | LN1220-SC |
| Material | Aluminum |
| Mounting style | Surface mounted |
| Length | 3.28' (1m) |
| Width | 0.69" (17.5mm) |
| Height | 0.9" (22.9mm) |
| Internal width | / |

| | |
|----------------|-------------------------------|
| Name | Bendable channel (Side screw) |
| Code | LN1220-BC-S |
| Material | Stainless Steel |
| Mounting style | Surface mounted |
| Length | 1.64' (0.5m) |
| Width | 1.04" (26.4mm) |
| Height | 0.71" (18mm) |
| Internal Width | / |

| | |
|----------------|---------------------------------|
| Name | Bendable channel (Bottom screw) |
| Code | LN1220-BC-B |
| Material | Stainless Steel |
| Mounting style | Surface mounted |
| Length | 3.28' (1m) |
| Width | 0.53" (13.5mm) |
| Height | 0.71" (18mm) |
| Internal Width | 0.51" (12.9mm) |

| | |
|----------------|-----------------|
| Name | Mounting clip |
| Code | LN1220-CL |
| Material | Stainless Steel |
| Mounting style | Surface mounted |
| Length | 0.79" (20mm) |
| Width | 0.5" (12.6mm) |
| Height | 0.74" (18.9mm) |
| Internal Width | / |

| | |
|----------------|---------------------------|
| Name | Recessed straight channel |
| Code | LN1220-RSC |
| Material | Aluminum |
| Mounting style | Recessed mounted |
| Length | 3.28' (1m) |
| Width | 0.69" (17.5mm) |
| Height | 0.9" (22.9mm) |
| Internal width | / |

LINIO NEON 1220 SV

Outdoor · Horizontal Bending · Field Cuttable



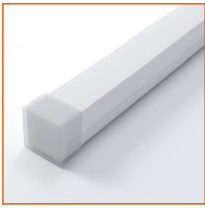
Driver Options

| Code | Max Load | Input | Output | Dimmable | Class 2 | Environment | Size (L*W*H) |
|--|----------|------------|--------|----------|---------|--------------|-----------------------|
| Non Dimmable | | | | | | | |
| KV-24030-ASW | 30W | 100-277VAC | 24V | No | Yes | Dry/damp | 6.10*2.12*0.78 inch |
| KV-24060-ASW | 60W | 100-277VAC | 24V | No | Yes | Dry/damp | 7.00*2.40*0.94 inch |
| KV-24096-ASW | 96W | 100-277VAC | 24V | No | Yes | Dry/damp/wet | 9.05*2.75*1.69 inch |
| KV-24150-ASW | 150W | 100-277VAC | 24V | No | No | Dry/damp/wet | 10.07*3.07*1.85 inch |
| KV-24200-ASW | 200W | 100-277VAC | 24V | No | No | Dry/damp/wet | 10.07*3.07*1.85 inch |
| KV-24300-ASW | 300W | 100-277VAC | 24V | No | No | Dry/damp/wet | 10.86*3.07*1.85 inch |
| Phase cut /Triac Dimmable | | | | | | | |
| KVF-24030-TDW | 30W | 100-277VAC | 24V | Yes | Yes | Dry/damp | 6.10*2.12*0.78 inch |
| KVF-24060-TDW | 60W | 100-277VAC | 24V | Yes | Yes | Dry/damp | 7*2.4*0.94 inch |
| KVF-24096-TDW | 96W | 100-277VAC | 24V | Yes | Yes | Dry/damp/wet | 9.05*2.75*1.69 inch |
| KVF-24150-TDW | 150W | 100-277VAC | 24V | Yes | No | Dry/damp/wet | 10*3.07*1.85 inch |
| KVF-24200-TDW | 200W | 100-277VAC | 24V | Yes | No | Dry/damp/wet | 10*3.07*1.85 inch |
| KVF-24300-TDW | 300W | 100-277VAC | 24V | Yes | No | Dry/damp/wet | 10.87*3.07*1.85 inch |
| 4 in 1 Dimmable (0-10V/1-10V/Potentiometer/10V PWM) | | | | | | | |
| KVD-24030-DIM | 30W | 100-277VAC | 24V | Yes | Yes | Dry/damp | 6.10*2.12*0.78 inch |
| KVD-24060-DIM | 60W | 100-277VAC | 24V | Yes | Yes | Dry/damp | 7.01*2.40*0.94 inch |
| KVD-24096-DIM | 96W | 100-277VAC | 24V | Yes | Yes | Dry/damp/wet | 9.05*2.75*1.69 inch |
| KVD-24150-DIM | 150W | 100-277VAC | 24V | Yes | No | Dry/damp/wet | 10.08*3.07*1.85 inch |
| KVD-24200-DIM | 200W | 100-277VAC | 24V | Yes | No | Dry/damp/wet | 13.38*11.02*7.28 inch |
| KVD-24300-DIM | 300W | 100-277VAC | 24V | Yes | No | Dry/damp/wet | 10.87*3.07*1.89 inch |
| 5 in 1 Dimmable (Triac/0-10V/1-10V/Potentiometer/10V PWM) | | | | | | | |
| KVG-24030-DW | 30W | 100-277VAC | 24V | Yes | Yes | Dry/damp | 6.1*2.13*0.79 inch |
| KVG-24060-DW | 60W | 100-277VAC | 24V | Yes | Yes | Dry/damp | 7.01*2.41*0.94 inch |
| KVG-24096-DW | 96W | 100-277VAC | 24V | Yes | Yes | Dry/damp/wet | 9.06*2.76*1.69 inch |
| KVG-24150-DW | 150W | 100-277VAC | 24V | Yes | No | Dry/damp/wet | 10.08*3.07*1.85 inch |
| KVG-24200-DW | 200W | 100-277VAC | 24V | Yes | No | Dry/damp/wet | 10.08*3.07*1.85 inch |
| KVG-24300-DW | 300W | 100-277VAC | 24V | Yes | No | Dry/damp/wet | 10.87*3.07*1.89 inch |

* Please refer to the spec sheet of each power supply for more detailed information

* KVF, KVD, KVG series are available in junction box enclosure, you can select it by adding "J" at the end of the driver code, e.g. KVF-24030-TDWJ, and refer to its standalone spec sheet on our website.

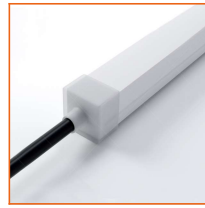
Accessories Options (Optional, purchase for extra)



Name Silicone closed end cap

Code LN1220-SEC-C

Closed silicone end cap for



Name Silicone front end cap

Code LN1220-SEC-F-2P

Silicone end cap front entry with 11.81" black cable, 2 pin



Name Silicone side end cap

Code LN1220-SEC-S-2P

Silicone end cap side entry with 11.81" black cable, 2 pin



Name Silicone bottom end cap

Code LN1220-SEC-B-2P

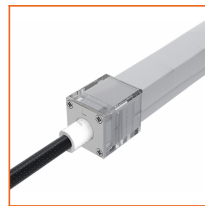
Silicone end cap bottom entry with 11.81" black cable, 2 pin



Name Mechanical end cap (G1)

Code LN1220-MEC1-C

Mechanical closed end cap with screws (G1)



Name Mechanical end cap (G1)

Code LN1220-MEC1-F-2P

Mechanical end cap with screws (G1), front entry with 11.81" black cable, 2 pin



Name Mechanical end cap (G1)

Code LN1220-MEC1-LS-2P

Mechanical end cap with screws (G1), left side entry with 11.81" black cable, 2 pin



Name Mechanical end cap (G1)

Code LN1220-MEC1-RS-2P

Mechanical end cap with screws (G1), right side entry with 11.81" black cable, 2 pin



Name Mechanical end cap (G1)

Code LN1220-MEC1-B-2P

Mechanical end cap with screws (G1), bottom entry with 11.81" black cable, 2 pin



Name Mechanical end cap (G3)

Code LN1220-MEC3-C

Screw-free mechanical closed end cap (G3)



Name Mechanical end cap (G3)

Code LN1220-MEC3-F-2P

Screw-free mechanical end cap (G3), front entry with 11.81" black cable, 2 pin



Name Mechanical end cap (G3)

Code LN1220-MEC3-LS-2P

Screw-free mechanical end cap (G3), left side entry with 11.81" black cable, 2 pin



Name Mechanical end cap (G3)

Code LN1220-MEC3-RS-2P

Screw-free mechanical end cap (G3), right side entry with 11.81" black cable, 2 pin



Name Mechanical end cap (G3)

Code LN1220-MEC3-B-2P

Screw-free mechanical end cap (G3), bottom entry with 11.81" black cable, 2 pin

LINIO NEON 1220 SV

Outdoor · Horizontal Bending · Field Cuttable



Name Male and female connectors
Code MFC-2P-67

Male and female connectors with 11.81" white cable, 2 pin



Name Extension connectors
Code ETC-2P-67-1M

Extension Male and female connectors with 3.28ft white cable, 2 pin



Name Extension connectors
Code ETC-2P-67-5M

Extension Male and female connectors with 16.4ft white cable, 2 pin



Name Silicone glue
Code SG

Silicone glue

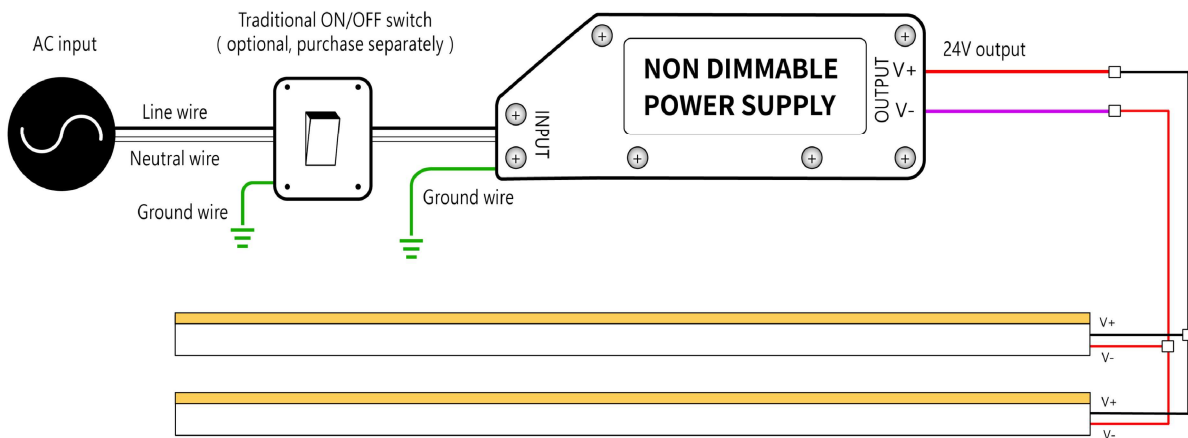


Name Suspension cord
Code LN1220-SPC

Use with the channel

Wiring Diagram

Non Dimmable



Dimmable

