



## LED CLICK LINE

- Slim in size 12.5x13mm(WxH) / 0.49"x0.51"(WxH).
- With high quality LED to offer long lifespan.
- 2-Step MacAdam bin and One BIN Only to ensure perfect color consistency.
- Complete smart accessories let you freely to create your desired lengths and shapes.
- Pre-wired LED fixture, simple and quick plug-and-play installation.
- Can go 8m/26.25ft Max. with one end power supply without brightness attenuation.

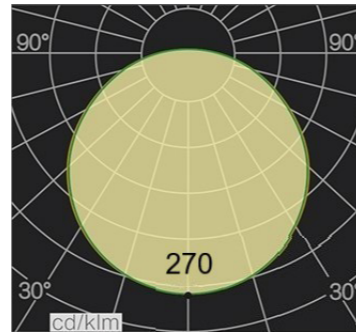
### Product Benefits:

- Designable and Inspired LED luminaire
- Magnetic, small and super exquisite appearance
- Indoor application, and homogeneous lighting outcome



### Electrical data

Voltage	DC24V (23.5V <sub>min</sub> 24.5V <sub>max</sub> )
LED PIN Temperature	Max. 65°C /149°F
Storage Temperature	-25°C /-13°F <sub>min</sub> 45°C /113°F <sub>max</sub>
Efficacy (lm/W)	80lm/w(4000K)
CRI	90
SMD Type	Lumileds 2835
Beam Angle	120°
IP Rate	IP20
Warranty	5 Years



LM/unit	LCL-100	LCL-200	LCL-500	AC01	AC02	AC03	AC04	AC05	AC06
2700K	100	190	480	320	250	160	150	160	180
3000K	100	190	480	320	250	160	150	160	180
3500K	100	190	480	320	250	160	150	160	180
4000K	100	190	480	320	250	160	150	160	180
6500K	100	190	480	320	250	160	150	160	180
Wattage (W)	1.2	2.5	6	4.8	3.6	2.4	2.4	2.4	3.6
Max. Run Length (M)	8	8	8	/	/	/	/	/	/

### Important notice

- LCL-100 refers to LED CLICK LINE in 100mm/3.94", LCL-200 refers to LED CLICK LINE in 200mm/7.87", LCL-500 refers to LED CLICK LINE in 500mm/19.69".
- Max. run length refers to single side feed in serial connection.
- Due to the tolerances of the production and electrical components, output values and electrical power can vary up to 10%.



### Order code

SERIES NAME	COLOR	LENGTH	POWER
LED CLICK LINE	27= 2700K	100=0.1M/3.94"	012=1.2W
	30= 3000K	200=0.2M/7.87"	025=2.5W
	35= 3500K	500=0.5M/19.68"	060=6W
	40=4000K		
	65=6500K		

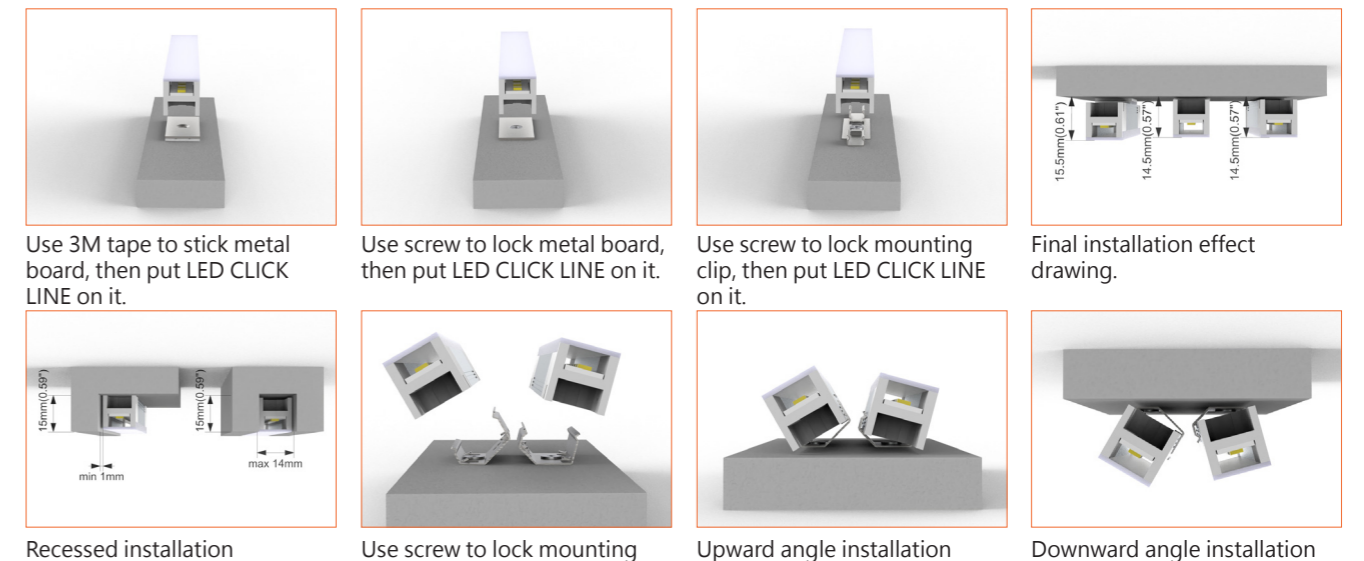
Example 1:  
LCL-27-100-012  
LED CLICK LINE, 2700K, 0.1M/unit,  
1.2W/unit

Example 2:  
LCL-30-500-060  
LED CLICK LINE,3000K, 0.5M/unit,  
6W/unit

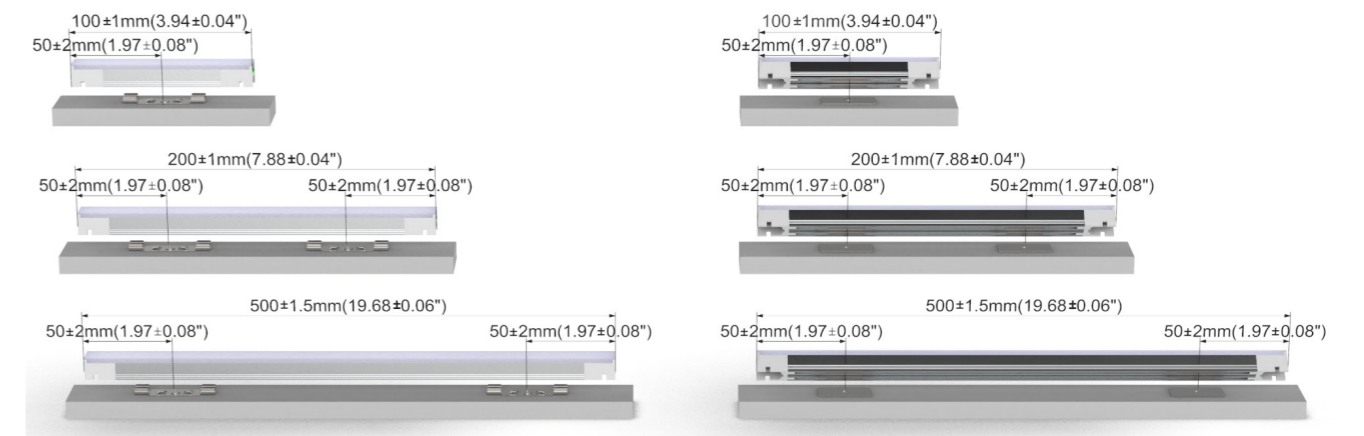
### Play and Plug



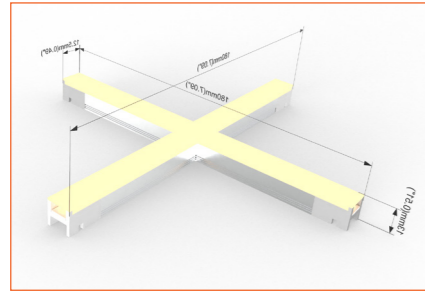
### Various Installation Way



### Order code

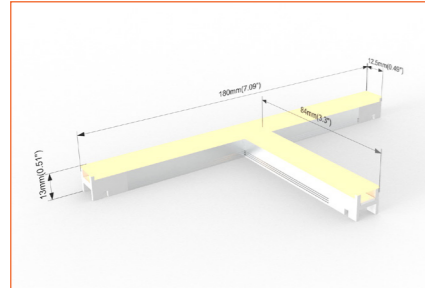


Order code



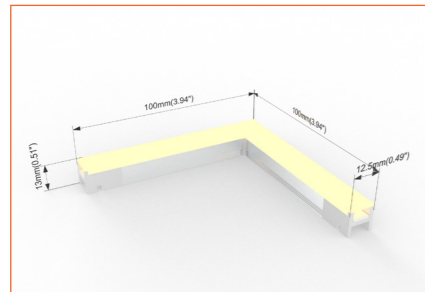
Cross connector  
Order Code: AC01

Seamless connection thanks to various smart connector. Simple DIY connection makes installation interesting.



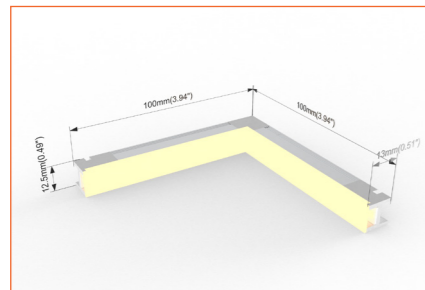
T shape connector  
Order Code: AC02

Seamless connection thanks to various smart connector. Simple DIY connection makes installation interesting.



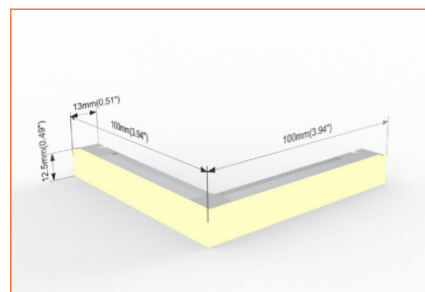
L shape flat connector  
Order Code: AC03

Seamless connection thanks to various smart connector. Simple DIY connection makes installation interesting.



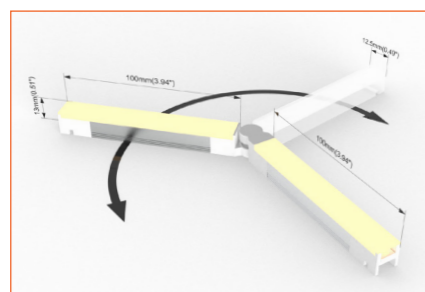
L shape light in connector  
Order Code: AC04

Seamless connection thanks to various smart connector. Simple DIY connection makes installation interesting.



L shape light out connector  
Order Code: AC05

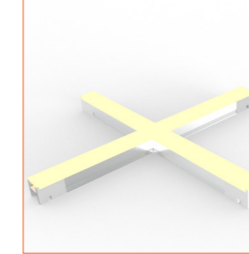
Seamless connection thanks to various smart connector. Simple DIY connection makes installation interesting.



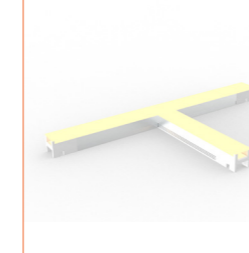
Rotation corner  
Order Code: AC06

Seamless connection thanks to various smart connector. Simple DIY connection makes installation interesting.

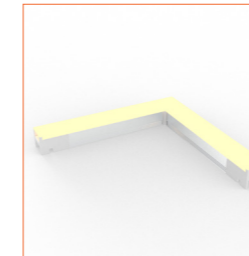
Order code



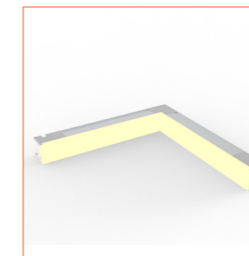
Cross connector  
Order Code: AC01  
Dimension: 180×180×13mm/  
7.08"×7.08"×0.51"(L×W×H)  
Material: aluminium



T shape connector  
Order Code: AC02  
Dimension: 180×96.3×13mm/  
7.08"×3.79"×0.51"(L×W×H)  
Material: aluminium



L shape flat connector  
Order Code: AC03  
Dimension: 100×100×13mm/  
3.94"×3.94"×0.51"(L×W×H)  
Material: aluminium



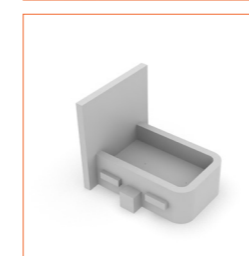
L shape light in connector  
Order Code: AC04  
Dimension: 100×100×12.5mm/  
3.94"×3.94"×0.49"(L×W×H)  
Material: aluminium



L shape light out connector  
Order Code: AC05  
Dimension: 100×100×12.5mm/  
3.94"×3.94"×0.49"(L×W×H)  
Material: aluminium



Rotation corner  
Order Code: AC06  
Dimension: 215×12.5×13mm/  
8.46"×0.49"×0.51"(L×W×H)  
Material: aluminium



Close end cap  
Order Code: AC07



Fixed bracket  
Order Code: AC08



Angle bracket  
Order Code: AC09



Magnet board  
Order Code: AC10



Joint connector-LCL to LCL  
Order Code: AC11



Extension cable-L145mm  
LCL to LCL  
Order Code: AC12



Extension cable-  
L1500mm  
LCL to LCL  
Order Code: AC13



Distribution cable-150mm  
Distribution box to cable  
Order Code: AC14



## Order code



Distribution cable-L1500mm  
Distribution box to cable  
Order Code: AC15



Constant Voltage LED Driver  
Non-Dimmable  
AC220-240V DC24V 30W  
Order Code: UT24V-30W



Power cable-L150mm  
Order Code: AC16



Constant Voltage LED Driver  
Non-Dimmable  
AC220-240V DC24V 75W  
Order Code: Q8H-24V-75W



Power cable with DC connector-  
L150mm  
Order Code: AC17



Constant Voltage LED Driver  
Non-Dimmable  
AC220-240V DC24V 150W  
Order Code: Q8H-24V-150W



Power cable with DC connector-  
L1500mm  
Order Code: AC18



Constant Voltage LED Driver  
Dimmable  
AC220-240V DC24V 150W  
Order Code: Q8H-24V-150W



Distribution box connector (with 6  
channels)  
Order Code: AC19



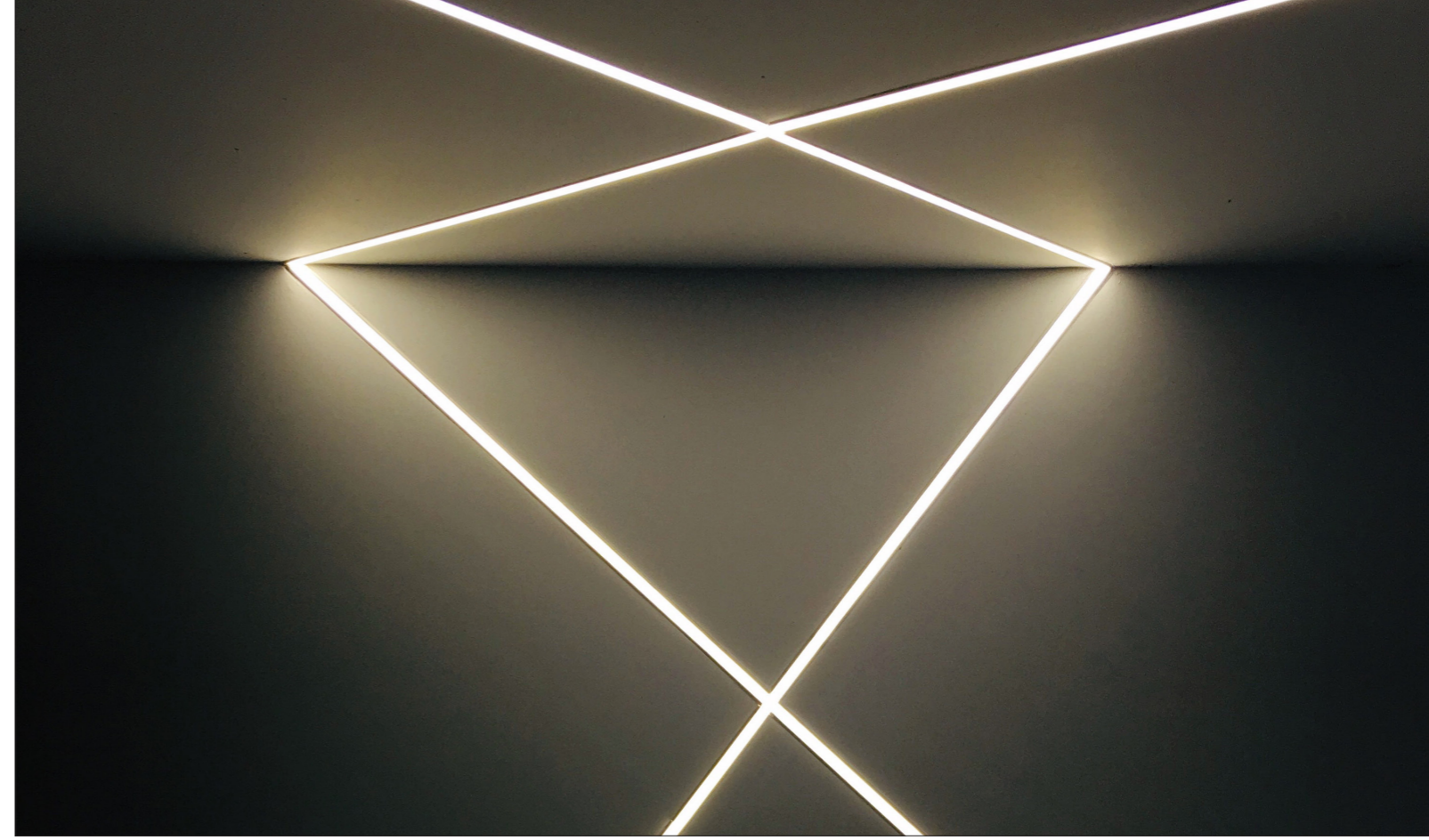
Dimmable LED Controller  
10-24VDC  
Order Code: C5AD-DALI CV



Distribution box open wire (with 6  
channels)  
Order Code: AC20



85-132VAC/170-264VAC by  
switch DC24V 150W IP20  
Global certification  
Order Code: LRS-150-24



## Application

LED CLICK LINE as features of magnetic, super creative, and what's more, that you will get so much fun in the meanwhile when decorate your beautiful project. E.g., just apply it on your fridge gate, and it will present super comfortable and design-able luminance for you during the dark. You can make different creative shape of the LED luminance, e.g., T-shape, L-shape, cross-shape, make them as parallel lines, rotated-corner, etc. Frees you inspiration, and new-creative.

## Order code

