

Beamever

ORLUX LARGE

Designer's Custom Playground

Outdoor · Vertical Bending · Horizontal Bending

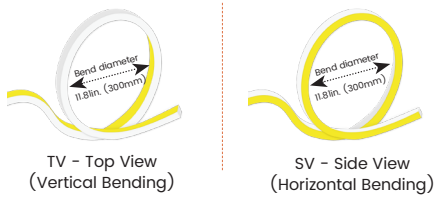
Features

- Field-cut anywhere for precise fit and seamless illumination
- IP68 rated, ideal for outdoor uses, not for underwater project
- 5 years warranty

Applications

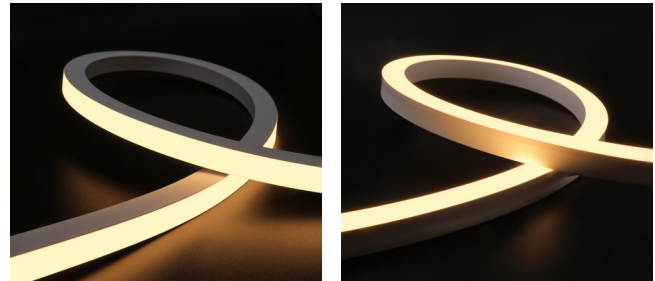
Hotels, apartments, lobbies, malls, facades, parks & soffits, etc.

Bending Directions & Diameters

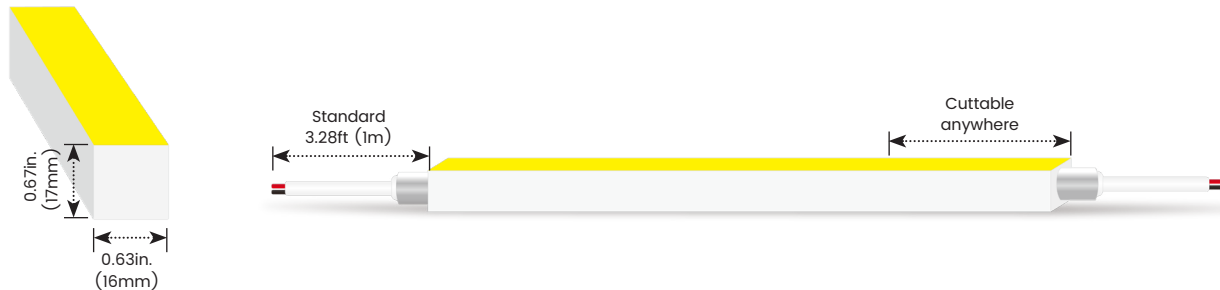


Date _____ Fixture type _____

Project name _____ Project phase _____



Dimensions



Order Code

Assembly Builder

Model	Environment	Voltage	CCT	Power	End Cap	Left Feed Entry		
OTVL	W8-Wet (IP68)	24V-DC24V	22K-2200K	3.1-3.05W/ft	FT Flush Translucent	F Front	OW	Open wire 11.81in. (300mm)
OSVL			27K-2700K		FO Flush Opaque	B Bottom	MC	Male connector with 11.81in. (300mm) cable
			30K-3000K			S Side	FC	Female connector with 11.81in. (300mm)cable
			35K-3500K			C Closed	NA	Only for Closed Feed Entry
			40K-4000K					
			53K-5300K					

Assembly Builder

Mounting Order Code

Right Feed Entry			Length
F Front	OW	Open wire 11.81in. (300mm)	Max. nominal 39.4ft (12m)
B Bottom	MC	Male connector with 11.81in. (300mm) cable	
S Side	FC	Female connector with 11.81in. (300mm)cable	
C Closed	NA	Only for Closed Feed Entry	

Product Code _____

Please select on the Mounting Options page

*We will list the nearest actual manufacturing length on the quotation, based on your requested length.

Lumen Output (lm/ft)

CCT	Vertical Bending	Horizontal Bending
	3.05W/ft	3.05W/ft
2200K	200	166
2700K	217	180
3000K	231	192
3500K	236	196
4000K	241	200
5300K	231	192
Max. Run for Class 2*	26.2ft (8m)	26.2ft (8m)
Max. Run Supported Length	39.4ft (12m)	39.4ft (12m)

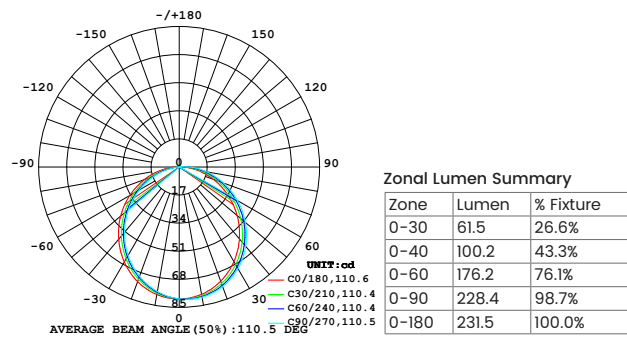
*Typically installations in USA and Canada comply with Class 2 requirements

Technical Details

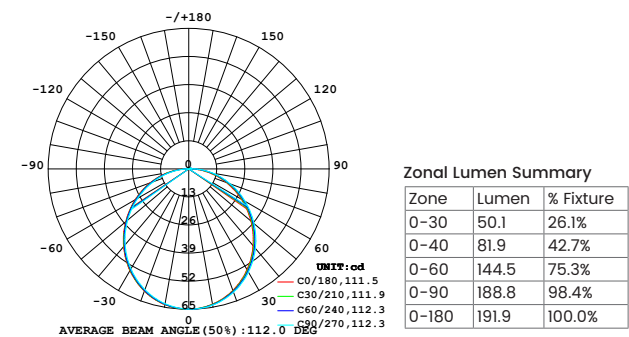
Parameter	Vertical Bending	Horizontal Bending
Efficacy	76lm/W @3000K 3.05W	63lm/W @3000K 3.05W
CRI	Ra>90	Ra>90
Beam Angle	110°	110°
LED MacAdam	3 steps	3 steps
Average Life (L80B10)	>51,000 hours	>51,000 hours
Storage Temperature	-40°F~149°F (-40°C~ 65°C)	-40°F~149°F (-40°C~ 65°C)
Operating Temperature	-40°F~149°F (-40°C~ 65°C)	-40°F~149°F (-40°C~ 65°C)

Photometry

OTVL-W8-24V-30K-3.1-FT-F-OW-F-OW
ORLUX TV LARGE, Vertical bend, 3000K, 3.05W/ft

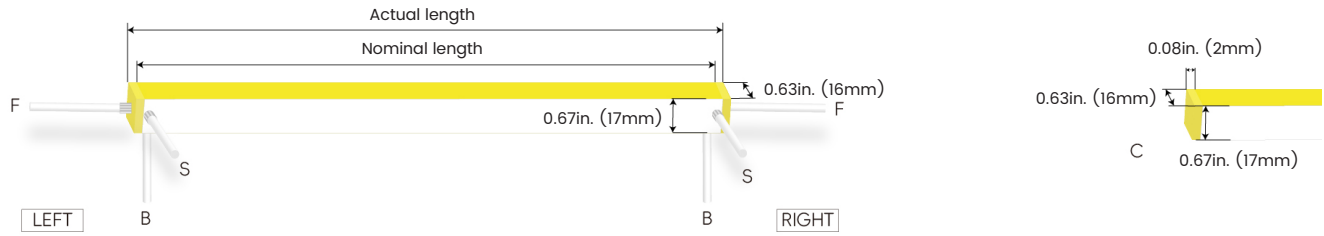


OSVL-W8-24V-30K-3.1-FT-F-OW-F-OW
ORLUX SV LARGE, Horizontal bend, 3000K, 3.05W/ft

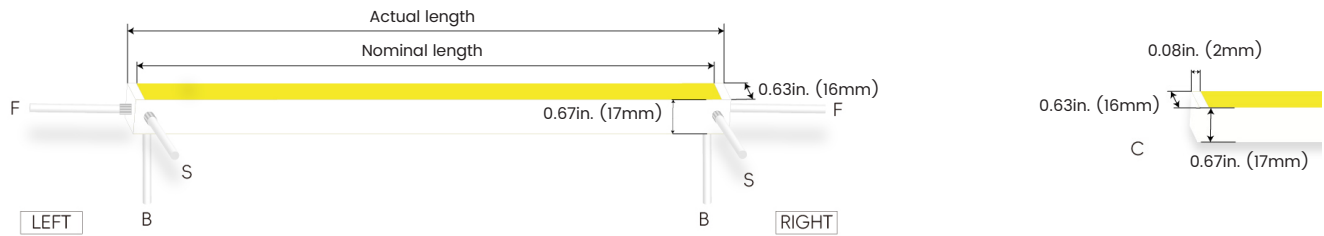


Feed Entry / End Cap Options

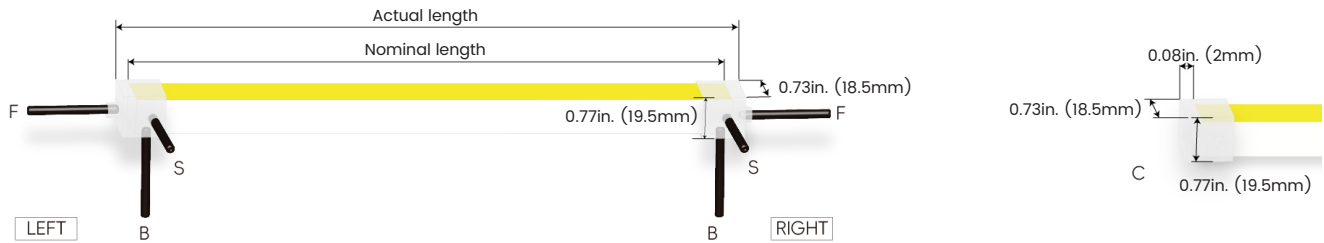
FT: Flush Translucent – IP68, factory-made only



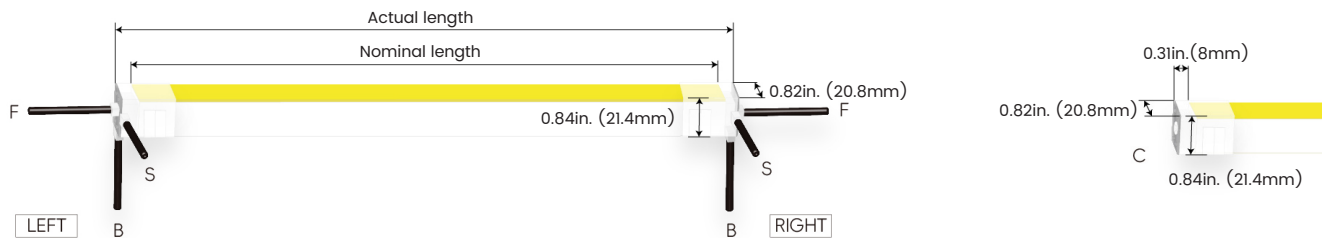
FO: Flush Opaque – IP68, factory-made only



Silicone end cap – IP67, for field cuttable only



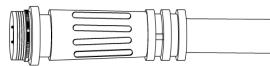
Mechanical end cap with screws – IP67, for field cuttable only



Connector Wire Options



OW: Open wire, **Dry only**
Standard 11.8in. (300mm), 18 AWG,
wire length customizable

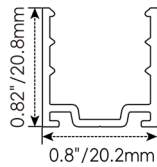
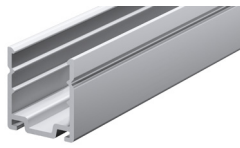


MC: Male connector, **Wet**
Standard 11.8in. (300mm), 18 AWG



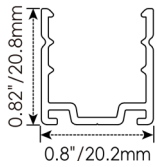
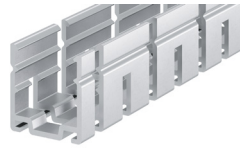
FC: Female connector, **Wet**
Standard 11.8in. (300mm), 18 AWG

Mounting Options



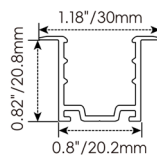
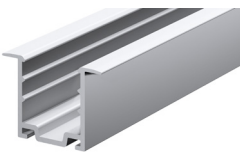
NF1617-SC

Name	Straight surface channel
Material	Aluminum
Standard Length	3.28ft (1m)



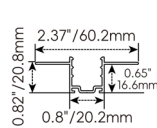
NF1617-BC

Name	Bendable surface channel
Material	Aluminum
Standard Length	3.28ft (1m)
Min. Bending Radius	11.8in (300mm)



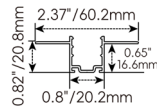
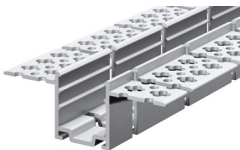
NF1617-RC

Name	Straight recessed channel
Material	Aluminum
Standard Length	3.28ft (1m)



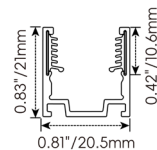
NF1617-MC

Name	Mud-in channel
Material	Aluminum
Standard Length	3.28ft (1m)



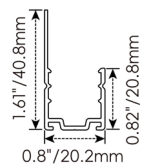
NF1617-BMC

Name	Bendable mud-in channel
Material	Aluminum
Standard Length	3.28ft (1m)
Min. Top Bending Radius	11.8in (300mm)
Min. Side Bending Radius	31.5in. (800mm)



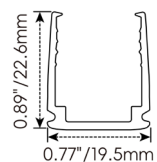
NF1617-SCS

Name	Straight surface channel
Material	Aluminum with silicone groove
Standard Length	3.28ft (1m)



NF1617-LBC

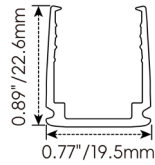
Name	Light-block channel
Material	Aluminum
Standard Length	3.28ft (1m)



NF1617-PC

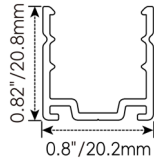
Name	PC channel
Material	Polycarbonate
Standard Length	3.28ft (1m)

Mounting Options



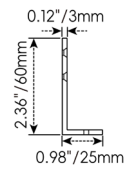
NF1617-BPC

Name	Bendable surface channel
Material	Polycarbonate
Standard Length	3.28ft (1m)
Min. Bending Radius	5.91in. (150mm)



NF1617-CL

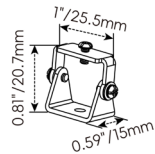
Name	Mounting clip
Material	Aluminum
Standard Length	0.98in. (25mm)



NF1617-LS

Name	L-shaped mounting bracket
Material	Aluminum
Standard Length	0.79in. (20mm)

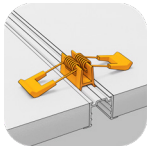
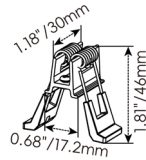
* NF1617-LS must be installed with NF1617-SC



NF1617-AC

Name	Adjustable mounting clip
Material	Stainless steel
Standard Length	1 in. (25.5mm)

* NF1617-AC must be installed with NF1617-SC

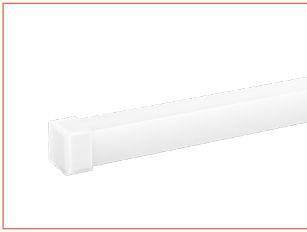


NF1617-RC-SPC

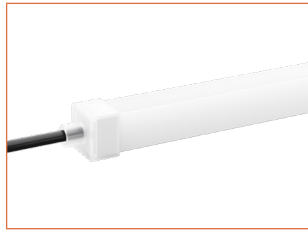
Name	Spring clip
Standard Pkg	1pcs

* NF1617-RC-SPC must be installed with NF1617-RC

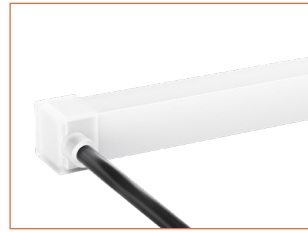
Silicone End Caps (Optional, purchase for extra)



NF1617-SEC-C
Silicone closed end cap



NF1617-SEC-F-2P
Silicone end cap front entry with 11.8in. (300mm) cable, 2 pin

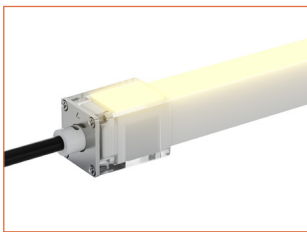


NF1617-SEC-S-2P
Silicone end cap side entry with 11.8in. (300mm) cable, 2 pin

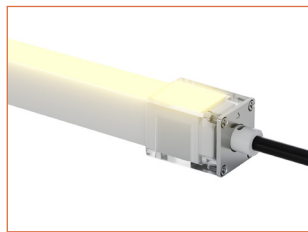


NF1617-SEC-B-2P
Silicone end cap bottom entry with 11.8in. (300mm) cable, 2 pin

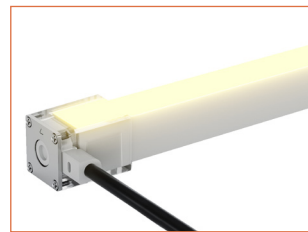
Solderless & Glueless Mechanical End Caps for Vertical Bending(Optional, purchase for extra)



NF1617T-MEC-LF-2P
Mechanical end cap with screws, left front entry, 11.8in. (300mm) cable, 2 pin, IP67



NF1617T-MEC-RF-2P
Mechanical end cap with screws, right front entry, 11.8in. (300mm) cable, 2 pin, IP67



NF1617T-MEC-LS-2P
Mechanical end cap with screws, left side entry, 11.8in. (300mm) cable, 2 pin, IP67



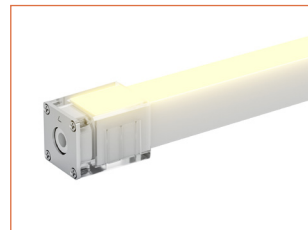
NF1617T-MEC-RS-2P
Mechanical end cap with screws, right side entry, 11.8in. (300mm) cable, 2 pin, IP67



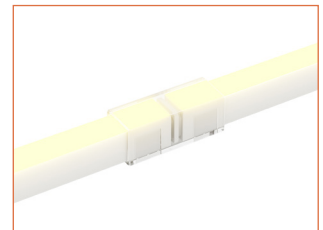
NF1617T-MEC-LB-2P
Mechanical end cap with screws, left bottom entry, 11.8in. (300mm) cable, 2 pin, IP67



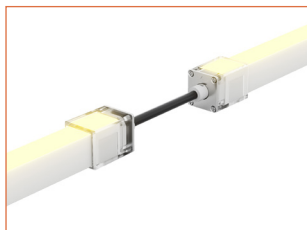
NF1617T-MEC-RB-2P
Mechanical end cap with screws, right bottom entry, 11.8in. (300mm) cable, 2 pin, IP67



NF1617T-MEC-C
Mechanical closed end cap with screws, IP67



NF1617T-S-S-2P
Strip to strip connector, 2 pin, IP54



NF1617T-JC-F-2P
Jumper connector front entry, 5.9in. (150mm) cable, 2 pin, IP67

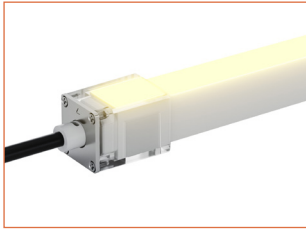


NF1617T-JC-S-2P
Jumper connector side entry, 5.9in. (150mm) cable, 2 pin, IP67

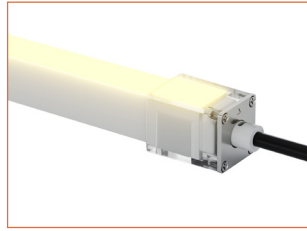


NF1617T-JC-B-2P
Jumper connector bottom entry, 5.9in. (150mm) cable, 2 pin, IP67

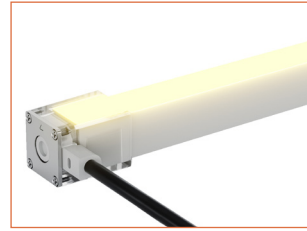
Solderless & Glueless Mechanical End Caps for Horizontal Bending(Optional, purchase for extra)



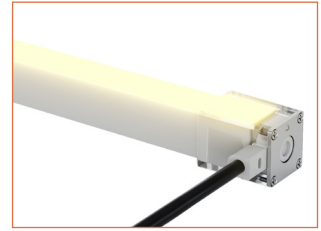
NF1617S-MEC-LF-2P
Mechanical end cap with screws, left front entry, 11.8lin. (300mm) cable, 2 pin, IP67



NF1617S-MEC-RF-2P
Mechanical end cap with screws, right front entry, 11.8lin. (300mm) cable, 2 pin, IP67



NF1617S-MEC-LS-2P
Mechanical end cap with screws, left side entry, 11.8lin. (300mm) cable, 2 pin, IP67



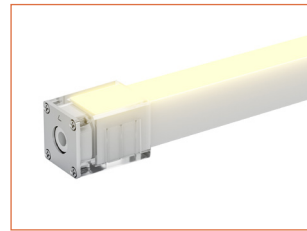
NF1617S-MEC-RS-2P
Mechanical end cap with screws, right side entry, 11.8lin. (300mm) cable, 2 pin, IP67



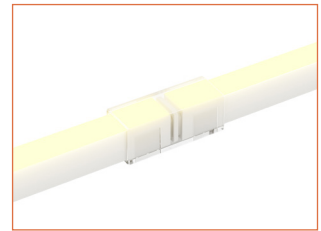
NF1617S-MEC-LB-2P
Mechanical end cap with screws, left bottom entry, 11.8lin. (300mm) cable, 2 pin, IP67



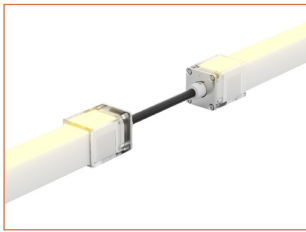
NF1617S-MEC-RB-2P
Mechanical end cap with screws, right bottom entry, 11.8lin. (300mm) cable, 2 pin, IP67



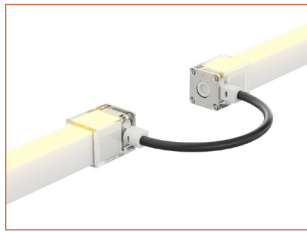
NF1617S-MEC-C
Mechanical closed end cap with screws, IP67



NF1617S-S-S-2P
Strip to strip connector, 2 pin, IP54



NF1617S-JC-F-2P
Jumper connector front entry, 5.9in. (150mm) cable, 2 pin, IP67



NF1617S-JC-S-2P
Jumper connector side entry, 5.9in. (150mm) cable, 2 pin, IP67



NF1617S-JC-B-2P
Jumper connector bottom entry, 5.9in. (150mm) cable, 2 pin, IP67

Additional Accessories (Optional, purchase for extra)



MCW-2P-67
Male connector, 11.8lin. (300mm) white cable, 2 pin, IP67, Wet, 18 AWG



FCW-2P-67
Female connector, 11.8lin. (300mm) white cable, 2 pin, IP67, Wet, 18 AWG



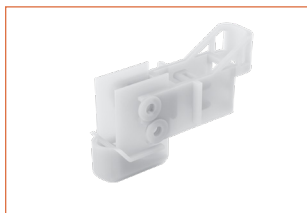
MCB-2P-67
Male connector, 11.8lin. (300mm) black cable, 2 pin, IP67, Wet, 18 AWG



FCB-2P-67
Female connector, 11.8lin. (300mm) black cable, 2 pin, IP67, Wet, 18 AWG



ADJS
1 Adjustable Angle Scissors Set, with 4 Spare Blades



NF1617-IT
Installation tool for NF1617-BPC

Drivers

Non-dimmable

Code	Max Load	Input	Output	Class 2	With Junction Box	Environment	Size (L x W x H)
KV-24030-ASW	30W	100-277VAC	24V	Yes	No	Dry/Damp	6.1 x 2.1 x 0.8in. (155 x 54 x 20mm)
KV-24060-ASW	60W	100-277VAC	24V	Yes	No	Dry/Damp	7 x 2.4 x 0.9in. (178 x 61 x 24mm)
KV-24096-ASW	96W	100-277VAC	24V	Yes	No	Dry/Damp/Wet	9.1 x 2.8 x 1.7in. (230 x 70 x 43mm)

Phase cut/Triac-dimmable

Code	Max Load	Input	Output	Class 2	With Junction Box	Environment	Size (L x W x H)
KVF-24030-TDW	30W	100-277VAC	24V	Yes	No	Dry/Damp	6.1 x 2.1 x 0.8in. (155 x 54 x 20mm)
KVF-24060-TDW	60W	100-277VAC	24V	Yes	No	Dry/Damp	7 x 2.4 x 0.9in. (178 x 61 x 24mm)
KVF-24096-TDW	96W	100-277VAC	24V	Yes	No	Dry/Damp/Wet	9.1 x 2.8 x 1.7in. (230 x 70 x 43mm)
KVF-24030-TDWJ	30W	100-277VAC	24V	Yes	Yes	Dry/Damp	6.5 x 3.6 x 1in. (165 x 92 x 26mm)
KVF-24060-TDWJ	60W	100-277VAC	24V	Yes	Yes	Dry/Damp	7.4 x 3.6 x 1in. (188 x 92 x 26mm)
KVF-24096-TDWJ	96W	100-277VAC	24V	Yes	Yes	Dry/Damp	8.7 x 3.7 x 1.6in. (220 x 93 x 41mm)
KVF-24192-TDWJ	192W (96Wx2)	100-277VAC	24V	Yes	Yes	Dry/Damp	10.9 x 4.3 x 1.8in. (278 x 110 x 45mm)
KVF-24288-TDWJ	288W (96Wx3)	100-277VAC	24V	Yes	Yes	Dry/Damp	11.9 x 4.3 x 1.8in. (301 x 110 x 45mm)
KVF-24384-TDWJ	384W (96Wx4)	100-277VAC	24V	Yes	Yes	Dry/Damp	12.7 x 5.5 x 1.9in. (323 x 140 x 48mm)

4 in 1-dimmable (0-10V/1-10V/Potentiometer/10V PWM)

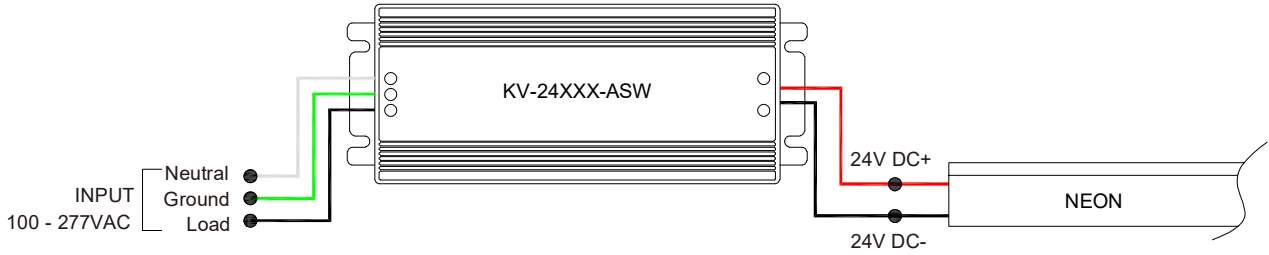
Code	Max Load	Input	Output	Class 2	With Junction Box	Environment	Size (L x W x H)
KVD-24030-DIM	30W	100-277VAC	24V	Yes	No	Dry/Damp	6.1 x 2.1 x 0.8in. (155 x 54 x 20mm)
KVD-24060-DIM	60W	100-277VAC	24V	Yes	No	Dry/Damp	7 x 2.4 x 0.9in. (178 x 61 x 24mm)
KVD-24096-DIM	96W	100-277VAC	24V	Yes	No	Dry/Damp/Wet	9.1 x 2.8 x 1.7in. (230 x 70 x 43mm)
KVD-24030-DIMJ	30W	100-277VAC	24V	Yes	Yes	Dry/Damp	6.5 x 3.6 x 1in. (165 x 92 x 26mm)
KVD-24060-DIMJ	60W	100-277VAC	24V	Yes	Yes	Dry/Damp	7.4 x 3.6 x 1in. (188 x 92 x 26mm)
KVD-24096-DIMJ	96W	100-277VAC	24V	Yes	Yes	Dry/Damp	8.7 x 3.7 x 1.6in. (220 x 93 x 41mm)
KVD-24192-DIMJ	192W (96Wx2)	100-277VAC	24V	Yes	Yes	Dry/Damp	10.9 x 4.3 x 1.8in. (278 x 110 x 45mm)
KVD-24288-DIMJ	288W (96Wx3)	100-277VAC	24V	Yes	Yes	Dry/Damp	11.9 x 4.3 x 1.8in. (301 x 110 x 45mm)
KVD-24384-DIMJ	384W (96Wx4)	100-277VAC	24V	Yes	Yes	Dry/Damp	12.7 x 5.5 x 1.9in. (323 x 140 x 48mm)

5 in 1-dimmable (Triac/0-10V/1-10V/Potentiometer/10V PWM)

Code	Max Load	Input	Output	Class 2	With Junction Box	Environment	Size (L x W x H)
KVG-24030-DW	30W	100-277VAC	24V	Yes	No	Dry/Damp	6.1 x 2.1 x 0.8in. (155 x 54 x 20mm)
KVG-24060-DW	60W	100-277VAC	24V	Yes	No	Dry/Damp	7 x 2.4 x 0.9in. (178 x 61 x 24mm)
KVG-24096-DW	96W	100-277VAC	24V	Yes	No	Dry/Damp/Wet	9.1 x 2.8 x 1.7in. (230 x 70 x 43mm)
KVG-24030-DWJ	30W	100-277VAC	24V	Yes	Yes	Dry/Damp	6.5 x 3.7 x 1.6in. (165 x 95 x 40mm)
KVG-24060-DWJ	60W	100-277VAC	24V	Yes	Yes	Dry/Damp	7.4 x 3.7 x 1.6in. (188 x 95 x 40mm)
KVG-24096-DWJ	96W	100-277VAC	24V	Yes	Yes	Dry/Damp	8.7 x 3.7 x 1.6in. (220 x 95 x 40mm)
KVG-C24192-DWJ	192W (96Wx2)	100-277VAC	24V	Yes	Yes	Dry/Damp	10.9 x 4.3 x 1.8in. (278 x 110 x 45mm)
KVG-C24288-DWJ	288W (96Wx3)	100-277VAC	24V	Yes	Yes	Dry/Damp	11.9 x 4.3 x 1.8in. (301 x 110 x 45mm)
KVG-C24384-DWJ	384W (96Wx4)	100-277VAC	24V	Yes	Yes	Dry/Damp	12.8 x 5.5 x 1.9in. (325 x 140 x 48mm)

Wiring Diagram

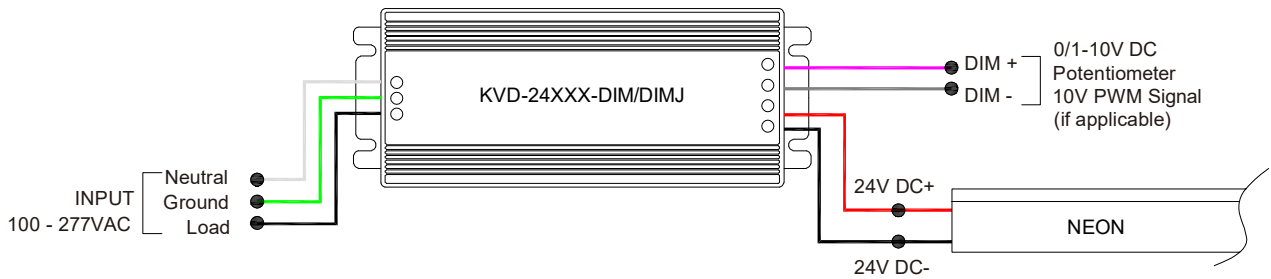
Non-dimmable



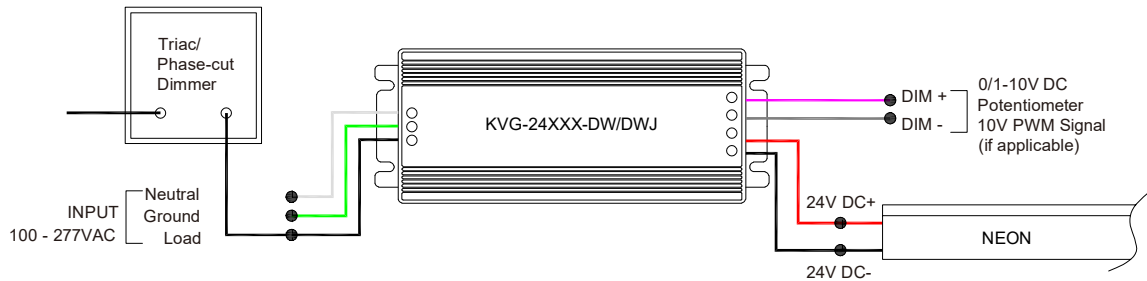
Phase cut/Triac-dimmable



4 in 1-dimmable (0-10V/1-10V/Potentiometer/10V PWM)



5 in 1-dimmable (Triac/0-10V/1-10V/Potentiometer/10V PWM)



24V Voltage Drop & Maximum Wire Length Chart

Based on 24V voltage with a 3% voltage drop allowance. Indicates the maximum wire length from the power supply to the start of the run.

Total load	8AWG	10AWG	12AWG	14AWG	16AWG	18AWG	20AWG	22AWG
10W / 0.4A	1588ft (484.0m)	999ft (304.5m)	628ft (191.4m)	395ft (120.4m)	248ft (75.5m)	156ft (47.5m)	98ft (29.8m)	61ft (18.5m)
20W / 0.8A	794ft (242.0m)	499ft (152.1m)	314ft (95.7m)	197ft (60.0m)	124ft (37.8m)	78ft (23.7m)	49ft (14.9m)	30ft (9.1m)
30W / 1.3A	529ft (161.2m)	333ft (101.5m)	209ft (63.7m)	131ft (39.9m)	82ft (24.9m)	52ft (15.8m)	32ft (9.7m)	20ft (6.1m)
40W / 1.7A	397ft (121.0m)	249ft (75.9m)	157ft (47.8m)	98ft (29.8m)	62ft (18.9m)	39ft (11.8m)	24ft (7.3m)	15ft (4.5m)
50W / 2.1A	317ft (96.6m)	199ft (60.6m)	125ft (38.1m)	79ft (24.0m)	49ft (14.9m)	31ft (9.4m)	19ft (5.7m)	12ft (3.6m)
60W / 2.5A	264ft (80.4m)	166ft (50.6m)	104ft (31.7m)	65ft (19.8m)	41ft (12.5m)	26ft (7.9m)	16ft (4.8m)	10ft (3.0m)
70W / 2.9A	226ft (68.8m)	142ft (43.2m)	89ft (27.1m)	56ft (17.0m)	35ft (10.6m)	22ft (6.7m)	14ft (4.2m)	8ft (2.4m)
80W / 3.3A	198ft (60.3m)	124ft (37.8m)	78ft (23.7m)	49ft (14.9m)	31ft (9.4m)	19ft (5.7m)	12ft (3.6m)	7ft (2.1m)
90W / 3.8A	176ft (53.6m)	111ft (33.8m)	69ft (21.0m)	43ft (13.1m)	27ft (8.2m)	17ft (5.1m)	10ft (3.0m)	6ft (1.8m)
100W / 4.2A	158ft (48.1m)	99ft (30.1m)	62ft (18.9m)	39ft (11.8m)	24ft (7.3m)	15ft (4.5m)	9ft (2.7m)	6ft (1.8m)
110W / 4.6A	144ft (43.8m)	90ft (27.4m)	57ft (17.3m)	35ft (10.6m)	22ft (6.7m)	14ft (4.2m)	9ft (2.7m)	5ft (1.5m)
120W / 5.0A	132ft (40.2m)	83ft (25.3m)	52ft (15.8m)	32ft (9.7m)	20ft (6.1m)	13ft (3.9m)	8ft (2.4m)	5ft (1.5m)
130W / 5.4A	122ft (37.1m)	76ft (23.1m)	48ft (14.6m)	30ft (9.1m)	19ft (5.7m)	12ft (3.6m)	7ft (2.1m)	4ft (1.2m)
140W / 5.8A	113ft (34.4m)	71ft (21.6m)	44ft (13.4m)	28ft (8.5m)	17ft (5.1m)	11ft (3.3m)	7ft (2.1m)	4ft (1.2m)
150W / 6.3A	105ft (32.0m)	66ft (20.1m)	41ft (12.5m)	26ft (7.9m)	16ft (4.8m)	10ft (3.0m)	6ft (1.8m)	4ft (1.2m)
160W / 6.7A	99ft (30.1m)	62ft (18.9m)	39ft (11.8m)	24ft (7.3m)	15ft (4.5m)	9ft (2.7m)	6ft (1.8m)	3ft (0.9m)
170W / 7.1A	93ft (28.3m)	58ft (17.6m)	36ft (10.9m)	23ft (7.0m)	14ft (4.2m)	9ft (2.7m)	5ft (1.5m)	3ft (0.9m)
180W / 7.5A	88ft (26.8m)	55ft (16.7m)	34ft (10.3m)	22ft (6.7m)	13ft (3.9m)	8ft (2.4m)	5ft (1.5m)	3ft (0.9m)
190W / 7.9A	83ft (25.3m)	52ft (15.8m)	33ft (10.0m)	20ft (6.0m)	13ft (3.9m)	8ft (2.4m)	5ft (1.5m)	3ft (0.9m)
200W / 8.3A	79ft (24.0m)	49ft (14.9m)	31ft (9.4m)	19ft (5.7m)	12ft (3.6m)	7ft (2.1m)	4ft (1.2m)	3ft (0.9m)
210W / 8.8A	75ft (22.8m)	47ft (14.3m)	29ft (8.8m)	18ft (5.4m)	11ft (3.3m)	7ft (2.1m)	4ft (1.2m)	2ft (0.6m)
220W / 9.2A	72ft (21.9m)	45ft (13.7m)	28ft (8.5m)	18ft (5.4m)	11ft (3.3m)	7ft (2.1m)	4ft (1.2m)	2ft (0.6m)
230W / 9.6A	69ft (21.0m)	43ft (13.1m)	27ft (8.2m)	17ft (5.1m)	10ft (3.0m)	6ft (1.8m)	4ft (1.2m)	2ft (0.6m)
240W / 10.0A	66ft (20.1m)	41ft (12.5m)	26ft (7.9m)	16ft (4.8m)	10ft (3.0m)	6ft (1.8m)	4ft (1.2m)	2ft (0.6m)
250W / 10.4A	63ft (19.2m)	40ft (12.1m)	25ft (7.6m)	15ft (4.5m)	9ft (2.7m)	6ft (1.8m)	3ft (0.9m)	2ft (0.6m)