

Beamever

FORTE 3D LARGE

Designer's Custom Playground

3D Bending · Static White

Features

- Flexible 3D bending for seamless integration with complex contours
- IK10 impact resistance for demanding environments
- IP68 rated, ideal for outdoor uses, not for underwater project
- 5 years warranty

FORTE 3D LARGE HE

- Up to 115 lm/W (337 lm/ft) for energy-efficient illumination
- 36.1ft single-feed runs for facades and architectural accents

FORTE 3D LARGE LONG RUN

- Up to 180.4ft single-feed for seamless, uninterrupted light lines
- Ideal for maximum single-feed length with minimal power access

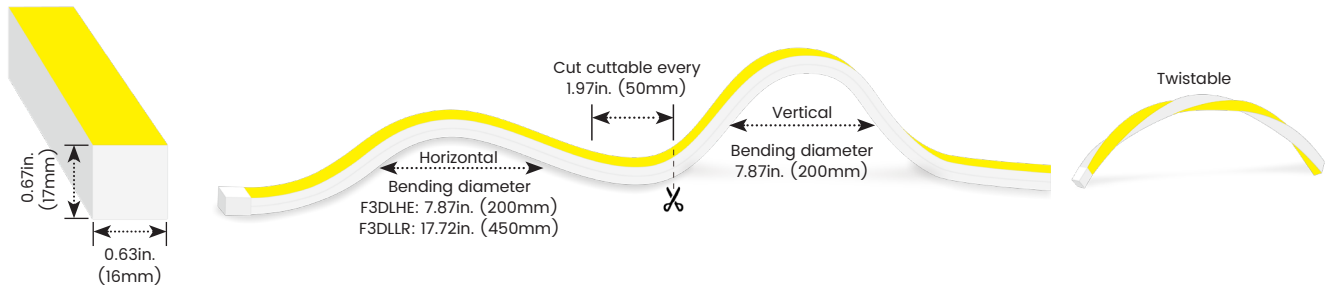
Applications

Architectural facades, building contours, landscape accents, bridges, walkways, transit hubs, staircases, and outdoor feature walls, etc.

Date	Fixture type
Project name	Project phase



Bending Directions & Diameters



Order Code

Model	Environment	Voltage	CCT	Power	End Cap	Left Feed Entry
F3DLHE	W8-Wet (IP68)	24V-DC24V	22K-2200K	1.5-1.46W/ft (F3DLLR only)	FT Flush Translucent	F Front
F3DLLR			27K-2700K	2.9-2.93W/ft (F3DLHE/F3DLLR)	FO Flush Opaque	B Bottom
			30K-3000K			S Side
			35K-3500K			C Closed
			40K-4000K			NA Only for Closed Feed Entry
			57K-5700K			

*F3DLHE:FORTE 3D LARGE HE
*F3DLLR:FORTE 3D LARGE LONG RUN

Assembly Builder

Assembly Builder

Right Feed Entry			Length
F	Front	OW Open wire 3.28ft (1m)	Max. nominal 36.1ft (11m)
B	Bottom	MC Male connector with 11.81in. (300mm) cable	*For F3DLHE
S	Side	FC Female connector with 11.81in. (300mm) cable	Max. nominal 180.4ft (55m)
C	Closed	NA Only for Closed Feed Entry	*For F3DLLR, 1.46W/ft
			Max. nominal 131.2ft (40m)
			*For F3DLLR, 2.93W/ft
			Increment 1.97in. (50mm)

*We will list the nearest actual manufacturing length on the quotation, based on your requested length.

Mounting Order Code

Product Code
Please select on the Mounting Options page

Lumen Output (lm/ft)

CCT	FORTE 3D LARGE HE	FORTE 3D LARGE LONG RUN	
	2.93W/ft	1.46W/ft	2.93W/ft
■ 2200K	263	102	190
■ 2700K	300	114	212
■ 3000K	325	121	224
■ 3500K	335	125	232
■ 4000K	337	124	230
■ 5700K	310	120	224
Max. Run for Class 2	27.3ft (8.3m)	54.8ft (16.7m)	27.3ft (8.3m)
Max. Run Supported Length	36.1ft (11m)	180.4ft (55m)	131.2ft (40m)

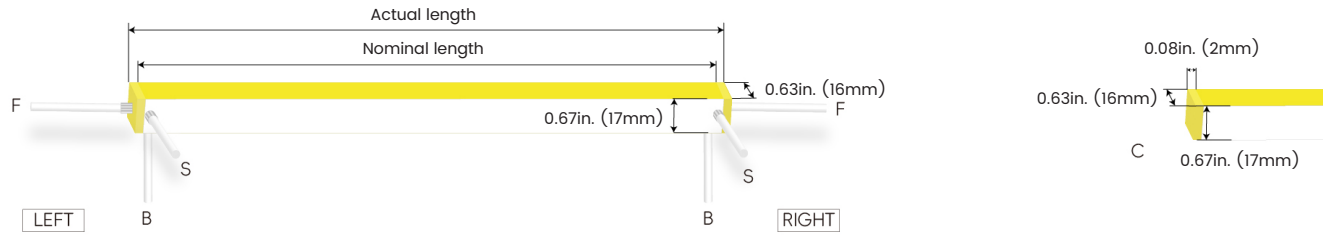
*Typically installations in USA and Canada comply with Class 2 requirements

Technical Details

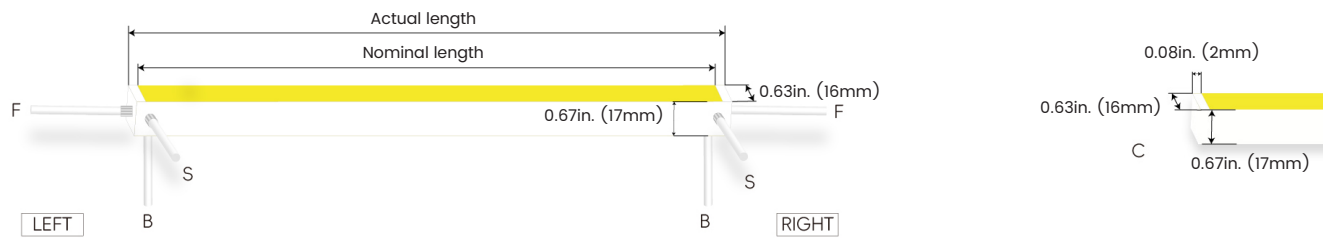
Parameter	FORTE 3D LARGE HE	FORTE 3D LARGE LONG RUN
Efficacy	110.9lm/W @3000K 2.93W	76.5lm/W @3000K 2.93W
CRI	Ra≥90	Ra≥90
Beam Angle	110°	110°
LED MacAdam	3 steps	3 steps
IK Rating	IK10 (with aluminium profile)	IK10 (with aluminium profile)
Average Life (L70B10)	>44,000 hours	>44,000 hours
Storage Temperature	-40°F ~ 149°F (-40°C~ 65°C)	-40°F ~ 149°F (-40°C~ 65°C)
Operating Temperature	-40°F ~ 149°F (-40°C~ 65°C)	-40°F ~ 149°F (-40°C~ 65°C)

Feed Entry / End Cap Options

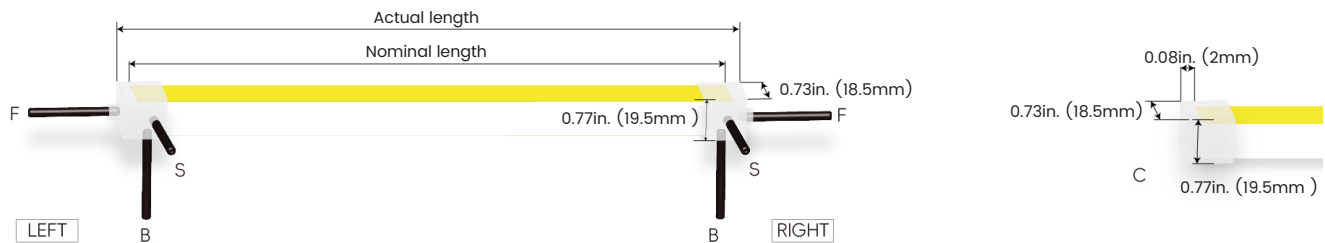
FT: Flush Translucent – IP68, factory-made only



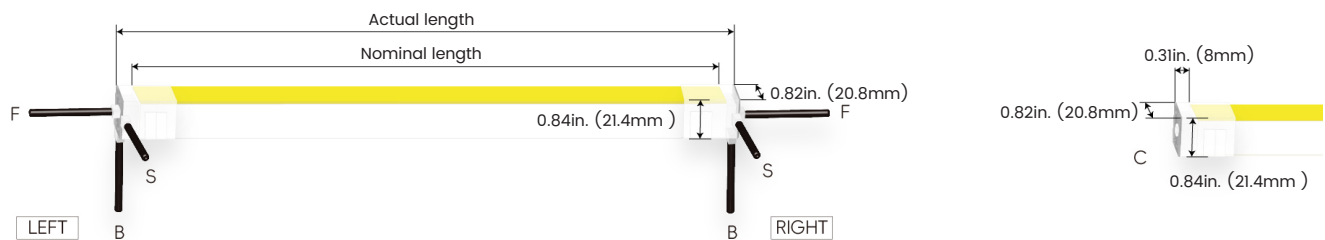
FO: Flush Opaque – IP68, factory-made only



Silicone end cap – IP67, for field cuttable only



Mechanical end cap with screws – IP67, for field cuttable only, FORTE 3D LARGE LONG RUN only



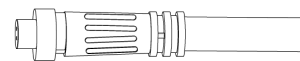
Connector Wire Options



OW: Open wire, **Dry** only
Standard 3.28ft (1m), 18 AWG,
wire length customizable

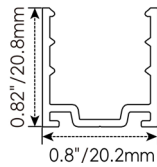
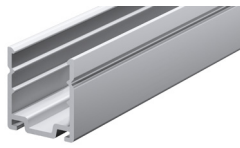


MC: Male connector, **Wet**
Standard 11.8in. (300mm), 18 AWG



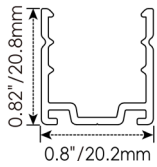
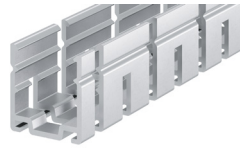
FC: Female connector, **Wet**
Standard 11.8in. (300mm), 18 AWG

Mounting Options



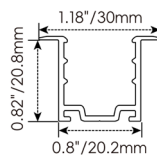
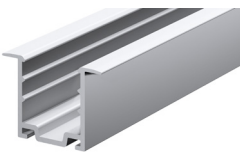
NF1617-SC

Name	Straight surface channel
Material	Aluminum
Standard Length	3.28ft (1m)



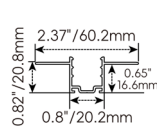
NF1617-BC

Name	Bendable surface channel
Material	Aluminum
Standard Length	3.28ft (1m)
Min. Bending Radius	11.8in (300mm)



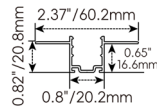
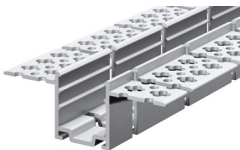
NF1617-RC

Name	Straight recessed channel
Material	Aluminum
Standard Length	3.28ft (1m)



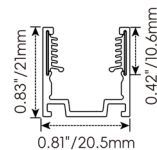
NF1617-MC

Name	Mud-in channel
Material	Aluminum
Standard Length	3.28ft (1m)



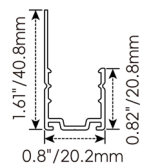
NF1617-BMC

Name	Bendable mud-in channel
Material	Aluminum
Standard Length	3.28ft (1m)
Min. Top Bending Radius	11.8in (300mm)
Min. Side Bending Radius	31.5in. (800mm)



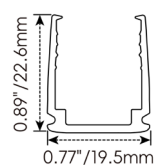
NF1617-SCS

Name	Straight surface channel
Material	Aluminum with silicone groove
Standard Length	3.28ft (1m)



NF1617-LBC

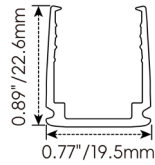
Name	Light-block channel
Material	Aluminum
Standard Length	3.28ft (1m)



NF1617-PC

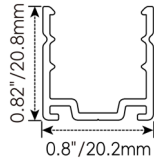
Name	PC channel
Material	Polycarbonate
Standard Length	3.28ft (1m)

Mounting Options



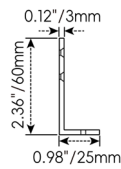
NF1617-BPC

Name	Bendable surface channel
Material	Polycarbonate
Standard Length	3.28ft (1m)
Min. Bending Radius	5.91in. (150mm)



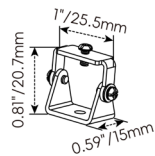
NF1617-CL

Name	Mounting clip
Material	Aluminum
Standard Length	0.98in. (25mm)



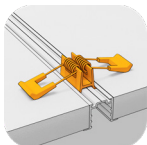
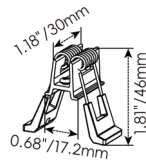
NF1617-LS

Name	L-shaped mounting bracket
Material	Aluminum
Standard Length	0.79in. (20mm)
* NF1617-LS must be installed with NF1617-SC	



NF1617-AC

Name	Adjustable mounting clip
Material	Stainless steel
Standard Length	1 in. (25.5mm)
* NF1617-AC must be installed with NF1617-SC	



NF1617-RC-SPC

Name	Spring clip
Standard Pkg	1pcs
* NF1617-RC-SPC must be installed with NF1617-RC	

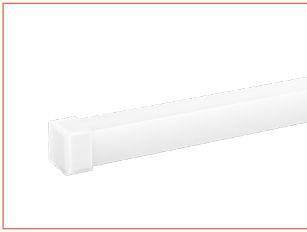
Beamever

FORTE 3D LARGE

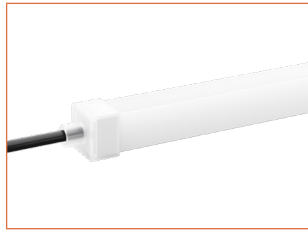
Designer's Custom Playground

3D Bending · Static White

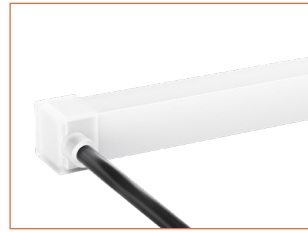
Silicone End Caps (Optional, purchase for extra)



NF1617-SEC-C
Silicone closed end cap



NF1617-SEC-F-2P
Silicone end cap front entry with 11.81in. (300mm) cable, 2 pin

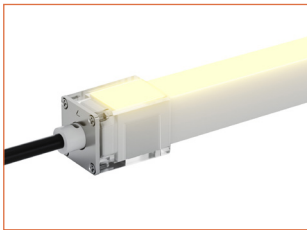


NF1617-SEC-S-2P
Silicone end cap side entry with 11.81in. (300mm) cable, 2 pin

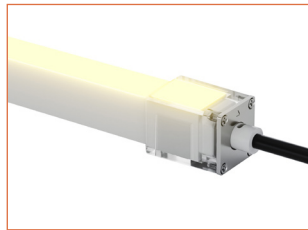


NF1617-SEC-B-2P
Silicone end cap bottom entry with 11.81in. (300mm) cable, 2 pin

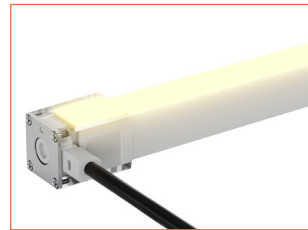
Solderless & Glueless Mechanical End Caps for FORTE 3D LARGE LONG RUN only (Optional, purchase for extra)



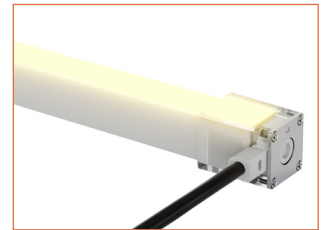
NF1617T-MEC-LF-2P
Mechanical end cap with screws, left front entry, 11.81in. (300mm) cable, 2 pin, IP67



NF1617T-MEC-RF-2P
Mechanical end cap with screws, right front entry, 11.81in. (300mm) cable, 2 pin, IP67



NF1617T-MEC-LS-2P
Mechanical end cap with screws, left side entry, 11.81in. (300mm) cable, 2 pin, IP67



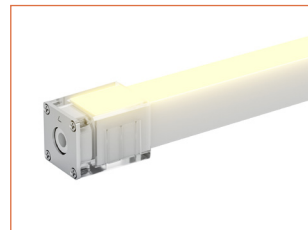
NF1617T-MEC-RS-2P
Mechanical end cap with screws, right side entry, 11.81in. (300mm) cable, 2 pin, IP67



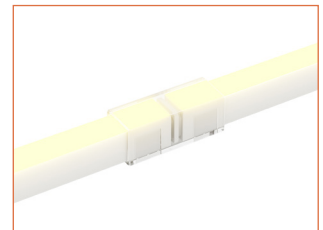
NF1617T-MEC-LB-2P
Mechanical end cap with screws, left bottom entry, 11.81in. (300mm) cable, 2 pin, IP67



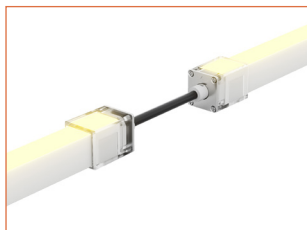
NF1617T-MEC-RB-2P
Mechanical end cap with screws, right bottom entry, 11.81in. (300mm) cable, 2 pin, IP67



NF1617T-MEC-C
Mechanical closed end cap with screws, IP67



NF1617T-S-S-2P
Strip to strip connector, 2 pin, IP54



NF1617T-JC-F-2P
Jumper connector front entry, 5.9in. (150mm) cable, 2 pin, IP67



NF1617T-JC-S-2P
Jumper connector side entry, 5.9in. (150mm) cable, 2 pin, IP67



NF1617T-JC-B-2P
Jumper connector bottom entry, 5.9in. (150mm) cable, 2 pin, IP67

Beamever

FORTE 3D LARGE

Designer's Custom Playground

3D Bending · Static White

Additional Accessories (Optional, purchase for extra)



MCW-2P-67
Male connector,
11.81in. (300mm) white cable,
2 pin, IP67, Wet, 18 AWG



FCW-2P-67
Female connector,
11.81in. (300mm) white cable,
2 pin, IP67, Wet, 18 AWG



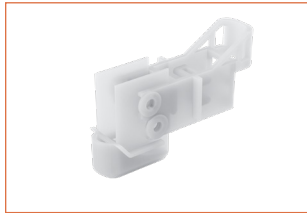
MCB-2P-67
Male connector,
11.81in. (300mm) black cable,
2 pin, IP67, Wet, 18 AWG



FCB-2P-67
Female connector,
11.81in. (300mm) black cable,
2 pin, IP67, Wet, 18 AWG



ADJS
1 Adjustable Angle Scissors Set,
with 4 Spare Blades



NF1617-IT
Installation tool for NF1617-BPC

Drivers

Non-dimmable

Code	Max Load	Input	Output	Class 2	With Junction Box	Environment	Size (L x W x H)
KV-24030-ASW	30W	100-277VAC	24V	Yes	No	Dry/Damp	6.1 x 2.1 x 0.8in. (155 x 54 x 20mm)
KV-24060-ASW	60W	100-277VAC	24V	Yes	No	Dry/Damp	7 x 2.4 x 0.9in. (178 x 61 x 24mm)
KV-24096-ASW	96W	100-277VAC	24V	Yes	No	Dry/Damp/Wet	9.1 x 2.8 x 1.7in. (230 x 70 x 43mm)

Phase cut/Triac-dimmable

Code	Max Load	Input	Output	Class 2	With Junction Box	Environment	Size (L x W x H)
KVF-24030-TDW	30W	100-277VAC	24V	Yes	No	Dry/Damp	6.1 x 2.1 x 0.8in. (155 x 54 x 20mm)
KVF-24060-TDW	60W	100-277VAC	24V	Yes	No	Dry/Damp	7 x 2.4 x 0.9in. (178 x 61 x 24mm)
KVF-24096-TDW	96W	100-277VAC	24V	Yes	No	Dry/Damp/Wet	9.1 x 2.8 x 1.7in. (230 x 70 x 43mm)
KVF-24030-TDWJ	30W	100-277VAC	24V	Yes	Yes	Dry/Damp	6.5 x 3.6 x 1in. (165 x 92 x 26mm)
KVF-24060-TDWJ	60W	100-277VAC	24V	Yes	Yes	Dry/Damp	7.4 x 3.6 x 1in. (188 x 92 x 26mm)
KVF-24096-TDWJ	96W	100-277VAC	24V	Yes	Yes	Dry/Damp	8.7 x 3.7 x 1.6in. (220 x 93 x 41mm)
KVF-24192-TDWJ	192W (96Wx2)	100-277VAC	24V	Yes	Yes	Dry/Damp	10.9 x 4.3 x 1.8in. (278 x 110 x 45mm)
KVF-24288-TDWJ	288W (96Wx3)	100-277VAC	24V	Yes	Yes	Dry/Damp	11.9 x 4.3 x 1.8in. (301 x 110 x 45mm)
KVF-24384-TDWJ	384W (96Wx4)	100-277VAC	24V	Yes	Yes	Dry/Damp	12.7 x 5.5 x 1.9in. (323 x 140 x 48mm)

4 in 1-dimmable (0-10V/1-10V/Potentiometer/10V PWM)

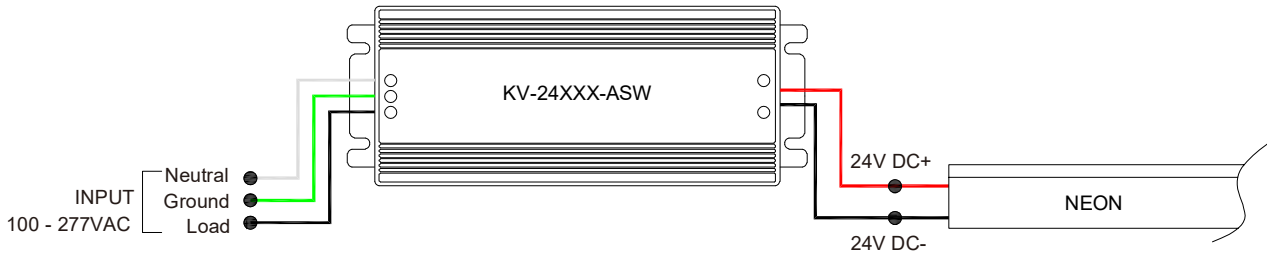
Code	Max Load	Input	Output	Class 2	With Junction Box	Environment	Size (L x W x H)
KVD-24030-DIM	30W	100-277VAC	24V	Yes	No	Dry/Damp	6.1 x 2.1 x 0.8in. (155 x 54 x 20mm)
KVD-24060-DIM	60W	100-277VAC	24V	Yes	No	Dry/Damp	7 x 2.4 x 0.9in. (178 x 61 x 24mm)
KVD-24096-DIM	96W	100-277VAC	24V	Yes	No	Dry/Damp/Wet	9.1 x 2.8 x 1.7in. (230 x 70 x 43mm)
KVD-24030-DIMJ	30W	100-277VAC	24V	Yes	Yes	Dry/Damp	6.5 x 3.6 x 1in. (165 x 92 x 26mm)
KVD-24060-DIMJ	60W	100-277VAC	24V	Yes	Yes	Dry/Damp	7.4 x 3.6 x 1in. (188 x 92 x 26mm)
KVD-24096-DIMJ	96W	100-277VAC	24V	Yes	Yes	Dry/Damp	8.7 x 3.7 x 1.6in. (220 x 93 x 41mm)
KVD-24192-DIMJ	192W (96Wx2)	100-277VAC	24V	Yes	Yes	Dry/Damp	10.9 x 4.3 x 1.8in. (278 x 110 x 45mm)
KVD-24288-DIMJ	288W (96Wx3)	100-277VAC	24V	Yes	Yes	Dry/Damp	11.9 x 4.3 x 1.8in. (301 x 110 x 45mm)
KVD-24384-DIMJ	384W (96Wx4)	100-277VAC	24V	Yes	Yes	Dry/Damp	12.7 x 5.5 x 1.9in. (323 x 140 x 48mm)

5 in 1-dimmable (Triac/0-10V/1-10V/Potentiometer/10V PWM)

Code	Max Load	Input	Output	Class 2	With Junction Box	Environment	Size (L x W x H)
KVG-24030-DW	30W	100-277VAC	24V	Yes	No	Dry/Damp	6.1 x 2.1 x 0.8in. (155 x 54 x 20mm)
KVG-24060-DW	60W	100-277VAC	24V	Yes	No	Dry/Damp	7 x 2.4 x 0.9in. (178 x 61 x 24mm)
KVG-24096-DW	96W	100-277VAC	24V	Yes	No	Dry/Damp/Wet	9.1 x 2.8 x 1.7in. (230 x 70 x 43mm)
KVG-24030-DWJ	30W	100-277VAC	24V	Yes	Yes	Dry/Damp	6.5 x 3.7 x 1.6in. (165 x 95 x 40mm)
KVG-24060-DWJ	60W	100-277VAC	24V	Yes	Yes	Dry/Damp	7.4 x 3.7 x 1.6in. (188 x 95 x 40mm)
KVG-24096-DWJ	96W	100-277VAC	24V	Yes	Yes	Dry/Damp	8.7 x 3.7 x 1.6in. (220 x 95 x 40mm)
KVG-C24192-DWJ	192W (96Wx2)	100-277VAC	24V	Yes	Yes	Dry/Damp	10.9 x 4.3 x 1.8in. (278 x 110 x 45mm)
KVG-C24288-DWJ	288W (96Wx3)	100-277VAC	24V	Yes	Yes	Dry/Damp	11.9 x 4.3 x 1.8in. (301 x 110 x 45mm)
KVG-C24384-DWJ	384W (96Wx4)	100-277VAC	24V	Yes	Yes	Dry/Damp	12.8 x 5.5 x 1.9in. (325 x 140 x 48mm)

Wiring Diagram

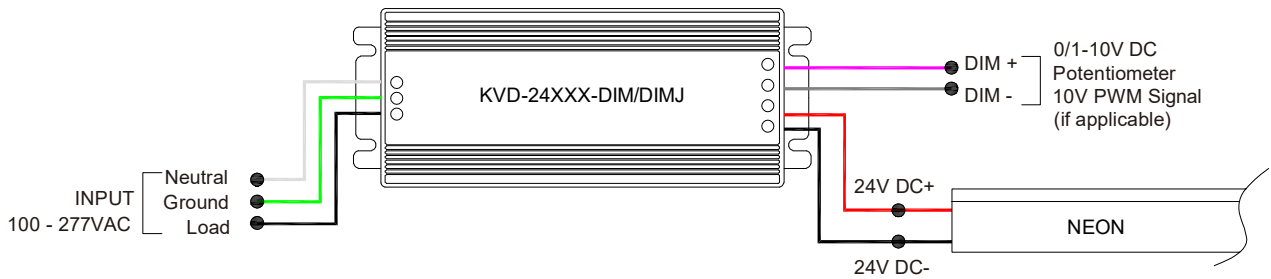
Non-dimmable



Phase cut/Triac-dimmable



4 in 1-dimmable (0-10V/1-10V/Potentiometer/10V PWM)



5 in 1-dimmable (Triac/0-10V/1-10V/Potentiometer/10V PWM)



24V Voltage Drop & Maximum Wire Length Chart

Based on 24V voltage with a 3% voltage drop allowance. Indicates the maximum wire length from the power supply to the start of the run.

Total load	8AWG	10AWG	12AWG	14AWG	16AWG	18AWG	20AWG	22AWG
10W / 0.4A	1588ft (484.0m)	999ft (304.5m)	628ft (191.4m)	395ft (120.4m)	248ft (75.5m)	156ft (47.5m)	98ft (29.8m)	61ft (18.5m)
20W / 0.8A	794ft (242.0m)	499ft (152.1m)	314ft (95.7m)	197ft (60.0m)	124ft (37.8m)	78ft (23.7m)	49ft (14.9m)	30ft (9.1m)
30W / 1.3A	529ft (161.2m)	333ft (101.5m)	209ft (63.7m)	131ft (39.9m)	82ft (24.9m)	52ft (15.8m)	32ft (9.7m)	20ft (6.1m)
40W / 1.7A	397ft (121.0m)	249ft (75.9m)	157ft (47.8m)	98ft (29.8m)	62ft (18.9m)	39ft (11.8m)	24ft (7.3m)	15ft (4.5m)
50W / 2.1A	317ft (96.6m)	199ft (60.6m)	125ft (38.1m)	79ft (24.0m)	49ft (14.9m)	31ft (9.4m)	19ft (5.7m)	12ft (3.6m)
60W / 2.5A	264ft (80.4m)	166ft (50.6m)	104ft (31.7m)	65ft (19.8m)	41ft (12.5m)	26ft (7.9m)	16ft (4.8m)	10ft (3.0m)
70W / 2.9A	226ft (68.8m)	142ft (43.2m)	89ft (27.1m)	56ft (17.0m)	35ft (10.6m)	22ft (6.7m)	14ft (4.2m)	8ft (2.4m)
80W / 3.3A	198ft (60.3m)	124ft (37.8m)	78ft (23.7m)	49ft (14.9m)	31ft (9.4m)	19ft (5.7m)	12ft (3.6m)	7ft (2.1m)
90W / 3.8A	176ft (53.6m)	111ft (33.8m)	69ft (21.0m)	43ft (13.1m)	27ft (8.2m)	17ft (5.1m)	10ft (3.0m)	6ft (1.8m)
100W / 4.2A	158ft (48.1m)	99ft (30.1m)	62ft (18.9m)	39ft (11.8m)	24ft (7.3m)	15ft (4.5m)	9ft (2.7m)	6ft (1.8m)
110W / 4.6A	144ft (43.8m)	90ft (27.4m)	57ft (17.3m)	35ft (10.6m)	22ft (6.7m)	14ft (4.2m)	9ft (2.7m)	5ft (1.5m)
120W / 5.0A	132ft (40.2m)	83ft (25.3m)	52ft (15.8m)	32ft (9.7m)	20ft (6.1m)	13ft (3.9m)	8ft (2.4m)	5ft (1.5m)
130W / 5.4A	122ft (37.1m)	76ft (23.1m)	48ft (14.6m)	30ft (9.1m)	19ft (5.7m)	12ft (3.6m)	7ft (2.1m)	4ft (1.2m)
140W / 5.8A	113ft (34.4m)	71ft (21.6m)	44ft (13.4m)	28ft (8.5m)	17ft (5.1m)	11ft (3.3m)	7ft (2.1m)	4ft (1.2m)
150W / 6.3A	105ft (32.0m)	66ft (20.1m)	41ft (12.5m)	26ft (7.9m)	16ft (4.8m)	10ft (3.0m)	6ft (1.8m)	4ft (1.2m)
160W / 6.7A	99ft (30.1m)	62ft (18.9m)	39ft (11.8m)	24ft (7.3m)	15ft (4.5m)	9ft (2.7m)	6ft (1.8m)	3ft (0.9m)
170W / 7.1A	93ft (28.3m)	58ft (17.6m)	36ft (10.9m)	23ft (7.0m)	14ft (4.2m)	9ft (2.7m)	5ft (1.5m)	3ft (0.9m)
180W / 7.5A	88ft (26.8m)	55ft (16.7m)	34ft (10.3m)	22ft (6.7m)	13ft (3.9m)	8ft (2.4m)	5ft (1.5m)	3ft (0.9m)
190W / 7.9A	83ft (25.3m)	52ft (15.8m)	33ft (10.0m)	20ft (6.0m)	13ft (3.9m)	8ft (2.4m)	5ft (1.5m)	3ft (0.9m)
200W / 8.3A	79ft (24.0m)	49ft (14.9m)	31ft (9.4m)	19ft (5.7m)	12ft (3.6m)	7ft (2.1m)	4ft (1.2m)	3ft (0.9m)
210W / 8.8A	75ft (22.8m)	47ft (14.3m)	29ft (8.8m)	18ft (5.4m)	11ft (3.3m)	7ft (2.1m)	4ft (1.2m)	2ft (0.6m)
220W / 9.2A	72ft (21.9m)	45ft (13.7m)	28ft (8.5m)	18ft (5.4m)	11ft (3.3m)	7ft (2.1m)	4ft (1.2m)	2ft (0.6m)
230W / 9.6A	69ft (21.0m)	43ft (13.1m)	27ft (8.2m)	17ft (5.1m)	10ft (3.0m)	6ft (1.8m)	4ft (1.2m)	2ft (0.6m)
240W / 10.0A	66ft (20.1m)	41ft (12.5m)	26ft (7.9m)	16ft (4.8m)	10ft (3.0m)	6ft (1.8m)	4ft (1.2m)	2ft (0.6m)
250W / 10.4A	63ft (19.2m)	40ft (12.1m)	25ft (7.6m)	15ft (4.5m)	9ft (2.7m)	6ft (1.8m)	3ft (0.9m)	2ft (0.6m)