

Beamever

LINIO NEON 1228X SV

Designer's Custom Playground

Horizontal Bending · Static White

Features

- Dome top design, eye-catching from three viewing angles
- IP68 rated, ideal for outdoor uses, not for underwater project
- 5 years warranty

Applications

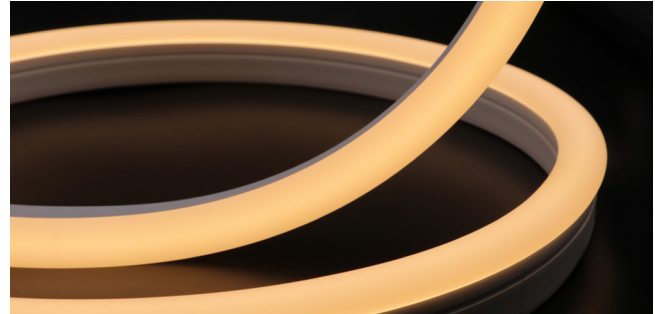
Museums, malls, amusement parks, restaurants, resorts, etc.

Date

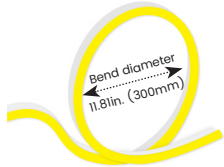
Fixture type

Project name

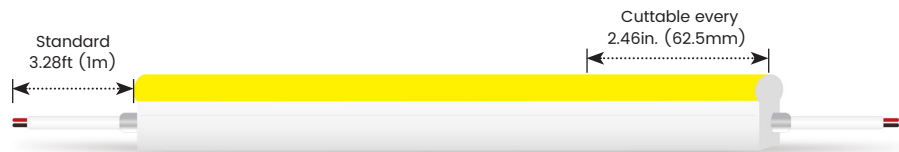
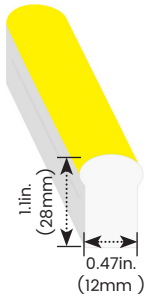
Project phase



Bending Directions & Diameters



Dimensions



Order Code

Assembly Builder

Model	Environment	Voltage	CCT	Power	End Cap	Left Feed Entry					
LN1228XSV	W8-Wet (IP68)	24V-DC24V	22K-2200K	2.9-2.93W/ft	FT	Flush Translucent	F	Front	OW	Open wire 3.28ft (1m)	
			27K-2700K	4.6-4.57W/ft	FO	Flush Opaque	B	Bottom	MC	Male connector with 0.98ft (30cm) cable	
			30K-3000K				S	Side	FC	Female connector with 0.98ft (30cm) cable	
			35K-3500K				C	Closed	NA	Only for Closed Feed Entry	
			40K-4000K								
			53K-5300K								

Assembly Builder

Right Feed Entry			Length	
F	Front	OW	Open wire 3.28ft (1m)	Max. nominal 32.8ft (10m)
B	Bottom	MC	Male connector with 0.98ft (30cm) cable	*For 2.93W/ft
S	Side	FC	Female connector with 0.98ft (30cm) cable	Max. nominal 16.4ft (5m)
C	Closed	NA	Only for Closed Feed Entry	*For 4.57W/ft
				Increment 2.46in. (62.5mm)

Mounting Order Code

Product Code
Please select on the Mounting Options page

*We will list the nearest actual manufacturing length on the quotation, based on your requested length.

Lumen Output (lm/ft)

CCT	2.93W/ft	4.57W/ft
2200K	114	168
2700K	133	195
3000K	142	208
3500K	144	211
4000K	146	215
5300K	143	210
Max. Run for Class 2	27.3ft (8.3m)	16.4ft (5m)
Max. Run Supported Length	32.8ft (10m)	16.4ft (5m)

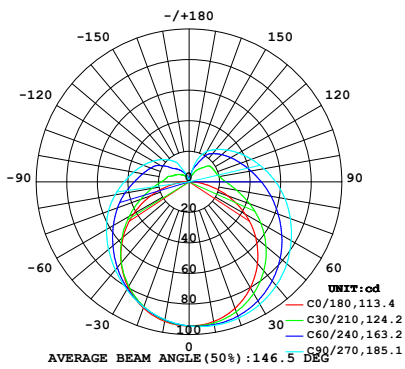
*Typically installations in USA and Canada comply with Class 2 requirements

Technical Details

Efficacy	48.5lm/W @3000K 2.93W
CRI	Ra>90
LED MacAdam	2 steps
IK Rating	IK10 (with aluminium profile,walk over only)
Average Life (L80B10)	>54,000 hours
Storage Temperature	-40°F ~ 149°F (-40°C~ 65°C)
Operating Temperature	-40°F ~ 149°F (-40°C~ 65°C)

Photometry

LNI228XSV-W8-24V-30K-2.9-FT-F-OW-F-OW
 LINIO NEON 1228X SV, Horizontal bend, 3000K, 2.93W/ft



Zonal Lumen Summary

Zone	Lumen	% Fixture
0-30	74.9	15.7%
0-40	124.9	26.1%
0-60	235.3	49.3%
0-90	367.0	76.8%
0-180	477.6	100.0%

Beamever

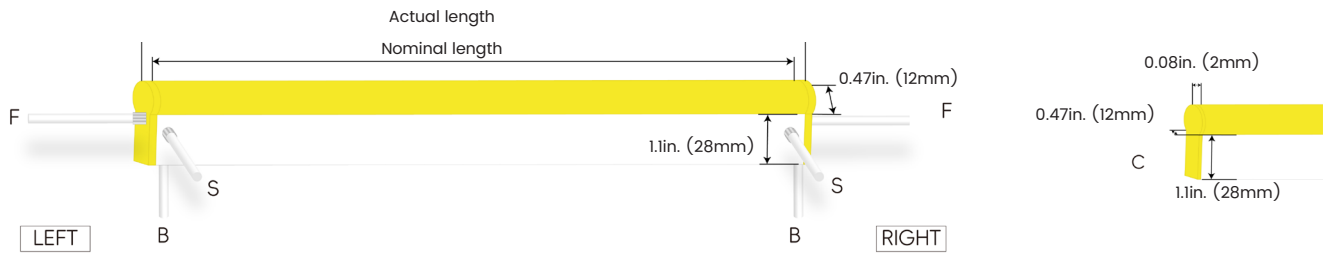
LINIO NEON 1228X SV

Designer's Custom Playground

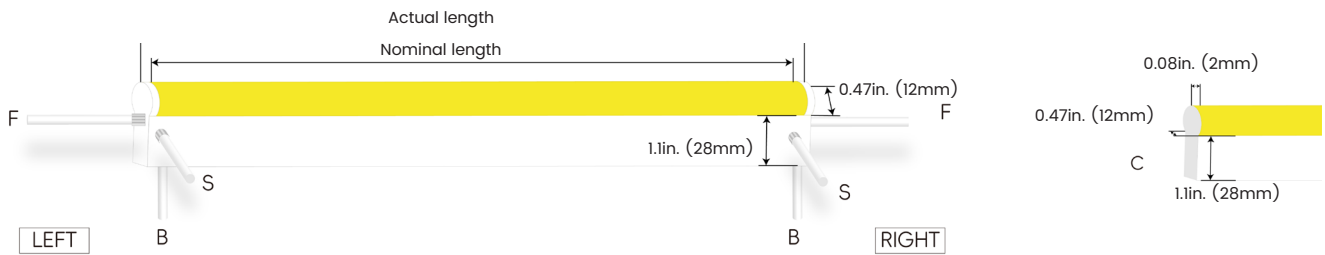
Horizontal Bending · Static White

Feed Entry / End Cap Options

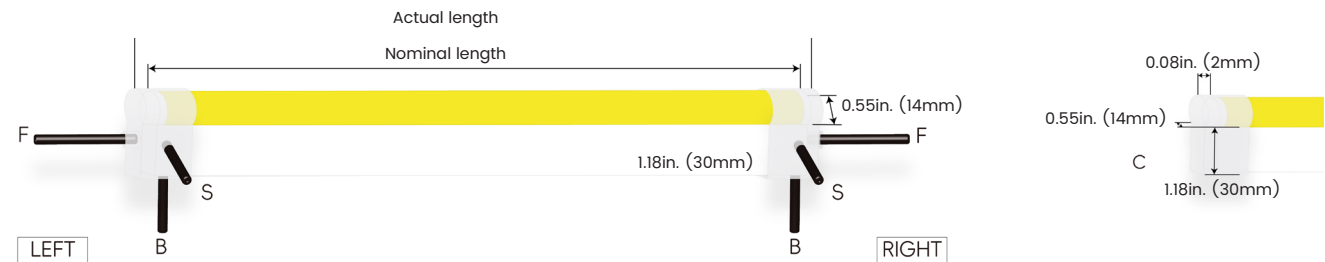
FT: Flush Translucent – IP68, factory-made only



FO: Flush Opaque – IP68, factory-made only



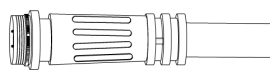
Silicone end cap – IP67, for field cuttable only



Connector Wire Options



OW: Open wire, Dry only
Standard 3.28ft (1m), 20 AWG,
wire length customizable





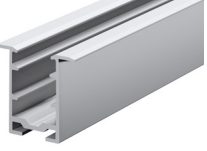

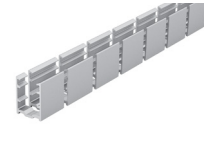





MC: Male connector, Dry
Standard 0.98ft (30cm), 20 AWG

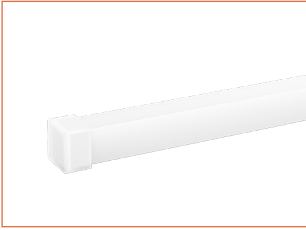


FC: Female connector, Dry
Standard 0.98ft (30cm), 20 AWG

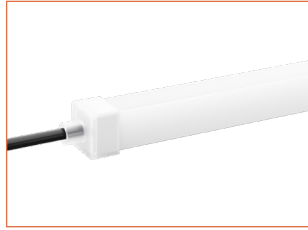
Mounting Options

			<p>LN1228-SC</p> <table border="1"> <tbody> <tr> <td>Name</td> <td>Straight surface channel</td> </tr> <tr> <td>Material</td> <td>Aluminum</td> </tr> <tr> <td>Standard Length</td> <td>3.28ft (1M)</td> </tr> </tbody> </table>	Name	Straight surface channel	Material	Aluminum	Standard Length	3.28ft (1M)		
Name	Straight surface channel										
Material	Aluminum										
Standard Length	3.28ft (1M)										
			<p>LN1228-BC</p> <table border="1"> <tbody> <tr> <td>Name</td> <td>Bendable surface channel</td> </tr> <tr> <td>Material</td> <td>Stainless Steel</td> </tr> <tr> <td>Standard Length</td> <td>3.28ft (1M)</td> </tr> <tr> <td>Min. Bending Diameter</td> <td>11.81in. (300mm)</td> </tr> </tbody> </table> <p>*Not suitable for upside-down installation</p>	Name	Bendable surface channel	Material	Stainless Steel	Standard Length	3.28ft (1M)	Min. Bending Diameter	11.81in. (300mm)
Name	Bendable surface channel										
Material	Stainless Steel										
Standard Length	3.28ft (1M)										
Min. Bending Diameter	11.81in. (300mm)										
			<p>LN1228-RC</p> <table border="1"> <tbody> <tr> <td>Name</td> <td>Straight recessed channel</td> </tr> <tr> <td>Material</td> <td>Aluminum</td> </tr> <tr> <td>Standard Length</td> <td>3.28ft (1M)</td> </tr> </tbody> </table>	Name	Straight recessed channel	Material	Aluminum	Standard Length	3.28ft (1M)		
Name	Straight recessed channel										
Material	Aluminum										
Standard Length	3.28ft (1M)										
			<p>LN1228-BCA</p> <table border="1"> <tbody> <tr> <td>Name</td> <td>Bendable surface channel</td> </tr> <tr> <td>Material</td> <td>Aluminum</td> </tr> <tr> <td>Standard Length</td> <td>3.28ft (1M)</td> </tr> <tr> <td>Min. Bending Diameter</td> <td>11.81in. (300mm)</td> </tr> </tbody> </table>	Name	Bendable surface channel	Material	Aluminum	Standard Length	3.28ft (1M)	Min. Bending Diameter	11.81in. (300mm)
Name	Bendable surface channel										
Material	Aluminum										
Standard Length	3.28ft (1M)										
Min. Bending Diameter	11.81in. (300mm)										
			<p>LN1228-CL</p> <table border="1"> <tbody> <tr> <td>Name</td> <td>Mounting clip</td> </tr> <tr> <td>Material</td> <td>Stainless Steel</td> </tr> <tr> <td>Standard Length</td> <td>0.79in. (20mm)</td> </tr> </tbody> </table> <p>*Not suitable for upside-down installation</p>	Name	Mounting clip	Material	Stainless Steel	Standard Length	0.79in. (20mm)		
Name	Mounting clip										
Material	Stainless Steel										
Standard Length	0.79in. (20mm)										

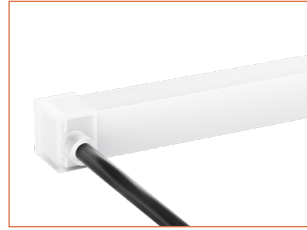
Silicone End Caps (Optional, purchase for extra)



LN1228-SEC-C
Silicone closed end cap



LN1228-SEC-F-2P
Silicone end cap front entry with 0.98ft (30cm) cable, 2 pin



LN1228-SEC-S-2P
Silicone end cap side entry with 0.98ft (30cm) cable, 2 pin



LN1228-SEC-B-2P
Silicone end cap bottom entry with 0.98ft (30cm) cable, 2 pin

Additional Accessories (Optional, purchase for extra)



MCW-2P-67
Male connector, 0.98ft (30cm) white cable, 2 pin, IP67, Wet, 20 AWG



FCW-2P-67
Female connector, 0.98ft (30cm) white cable, 2 pin, IP67, Wet, 20 AWG



MCB-2P-67
Male connector, 0.98ft (30cm) black cable, 2 pin, IP67, Wet, 20 AWG



FCB-2P-67
Female connector, 0.98ft (30cm) black cable, 2 pin, IP67, Wet, 20 AWG

Drivers

Non-dimmable

Code	Max Load	Input	Output	Class 2	With Junction Box	Environment	Size (L x W x H)
KV-24030-ASW	30W	100-277VAC	24V	Yes	No	Dry/Damp	6.1 x 2.1 x 0.8in. (15.5 x 5.4 x 2cm)
KV-24060-ASW	60W	100-277VAC	24V	Yes	No	Dry/Damp	7 x 2.4 x 0.9in. (17.8 x 6.1 x 2.4cm)
KV-24096-ASW	96W	100-277VAC	24V	Yes	No	Dry/Damp/Wet	9.1 x 2.8 x 1.7in. (23 x 7 x 4.3cm)

Phase cut/Triac-dimmable

Code	Max Load	Input	Output	Class 2	With Junction Box	Environment	Size (L x W x H)
KVF-24030-TDW	30W	100-277VAC	24V	Yes	No	Dry/Damp	6.1 x 2.1 x 0.8in. (15.5 x 5.4 x 2cm)
KVF-24060-TDW	60W	100-277VAC	24V	Yes	No	Dry/Damp	7 x 2.4 x 0.9in. (17.8 x 6.1 x 2.4cm)
KVF-24096-TDW	96W	100-277VAC	24V	Yes	No	Dry/Damp/Wet	9.1 x 2.8 x 1.7in. (23 x 7 x 4.3cm)
KVF-24030-TDWJ	30W	100-277VAC	24V	Yes	Yes	Dry/Damp	6.5 x 3.6 x 1in. (16.5 x 9.2 x 2.6cm)
KVF-24060-TDWJ	60W	100-277VAC	24V	Yes	Yes	Dry/Damp	7.4 x 3.6 x 1in. (18.8 x 9.2 x 2.6cm)
KVF-24096-TDWJ	96W	100-277VAC	24V	Yes	Yes	Dry/Damp	8.7 x 3.7 x 1.6in. (22 x 9.3 x 4.1cm)
KVF-24192-TDWJ	192W (96Wx2)	100-277VAC	24V	Yes	Yes	Dry/Damp	10.9 x 4.3 x 1.8in. (27.8 x 11 x 4.5cm)
KVF-24288-TDWJ	288W (96Wx3)	100-277VAC	24V	Yes	Yes	Dry/Damp	11.9 x 4.3 x 1.8in. (30.1 x 11 x 4.5cm)
KVF-24384-TDWJ	384W (96Wx4)	100-277VAC	24V	Yes	Yes	Dry/Damp	12.7 x 5.5 x 1.9in. (32.3 x 14 x 4.8cm)

4 in 1-dimmable (0-10V/1-10V/Potentiometer/10V PWM)

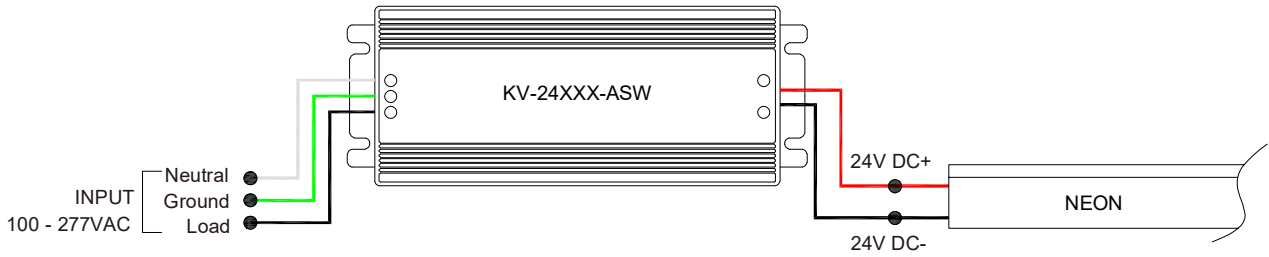
Code	Max Load	Input	Output	Class 2	With Junction Box	Environment	Size (L x W x H)
KVD-24030-DIM	30W	100-277VAC	24V	Yes	No	Dry/Damp	6.1 x 2.1 x 0.8in. (15.5 x 5.4 x 2cm)
KVD-24060-DIM	60W	100-277VAC	24V	Yes	No	Dry/Damp	7 x 2.4 x 0.9in. (17.8 x 6.1 x 2.4cm)
KVD-24096-DIM	96W	100-277VAC	24V	Yes	No	Dry/Damp/Wet	9.1 x 2.8 x 1.7in. (23 x 7 x 4.3cm)
KVD-24030-DIMJ	30W	100-277VAC	24V	Yes	Yes	Dry/Damp	6.5 x 3.6 x 1in. (16.5 x 9.2 x 2.6cm)
KVD-24060-DIMJ	60W	100-277VAC	24V	Yes	Yes	Dry/Damp	7.4 x 3.6 x 1in. (18.8 x 9.2 x 2.6cm)
KVD-24096-DIMJ	96W	100-277VAC	24V	Yes	Yes	Dry/Damp	8.7 x 3.7 x 1.6in. (22 x 9.3 x 4.1cm)
KVD-24192-DIMJ	192W (96Wx2)	100-277VAC	24V	Yes	Yes	Dry/Damp	10.9 x 4.3 x 1.8in. (27.8 x 11 x 4.5cm)
KVD-24288-DIMJ	288W (96Wx3)	100-277VAC	24V	Yes	Yes	Dry/Damp	11.9 x 4.3 x 1.8in. (30.1 x 11 x 4.5cm)
KVD-24384-DIMJ	384W (96Wx4)	100-277VAC	24V	Yes	Yes	Dry/Damp	12.7 x 5.5 x 1.9in. (32.3 x 14 x 4.8cm)

5 in 1-dimmable (Triac/0-10V/1-10V/Potentiometer/10V PWM)

Code	Max Load	Input	Output	Class 2	With Junction Box	Environment	Size (L x W x H)
KVG-24030-DW	30W	100-277VAC	24V	Yes	No	Dry/Damp	6.1 x 2.1 x 0.8in. (15.5 x 5.4 x 2cm)
KVG-24060-DW	60W	100-277VAC	24V	Yes	No	Dry/Damp	7 x 2.4 x 0.9in. (17.8 x 6.1 x 2.4cm)
KVG-24096-DW	96W	100-277VAC	24V	Yes	No	Dry/Damp/Wet	9.1 x 2.8 x 1.7in. (23 x 7 x 4.3cm)
KVG-24030-DWJ	30W	100-277VAC	24V	Yes	Yes	Dry/Damp	6.5 x 3.7 x 1.6in. (16.5 x 9.5 x 4cm)
KVG-24060-DWJ	60W	100-277VAC	24V	Yes	Yes	Dry/Damp	7.4 x 3.7 x 1.6in. (18.8 x 9.5 x 4cm)
KVG-24096-DWJ	96W	100-277VAC	24V	Yes	Yes	Dry/Damp	8.7 x 3.7 x 1.6in. (22 x 9.5 x 4cm)
KVG-C24192-DWJ	192W (96Wx2)	100-277VAC	24V	Yes	Yes	Dry/Damp	10.9 x 4.3 x 1.8in. (27.8 x 11 x 4.5cm)
KVG-C24288-DWJ	288W (96Wx3)	100-277VAC	24V	Yes	Yes	Dry/Damp	11.9 x 4.3 x 1.8in. (30.1 x 11 x 4.5cm)
KVG-C24384-DWJ	384W (96Wx4)	100-277VAC	24V	Yes	Yes	Dry/Damp	12.8 x 5.5 x 1.9in. (32.5 x 14 x 4.8cm)

Wiring Diagram

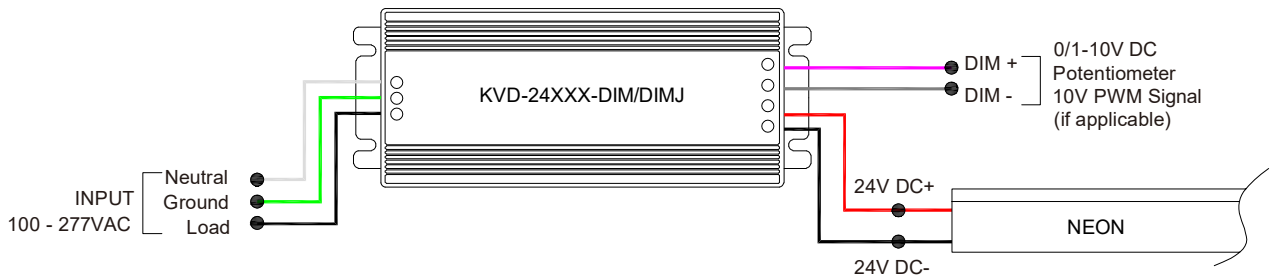
Non-dimmable



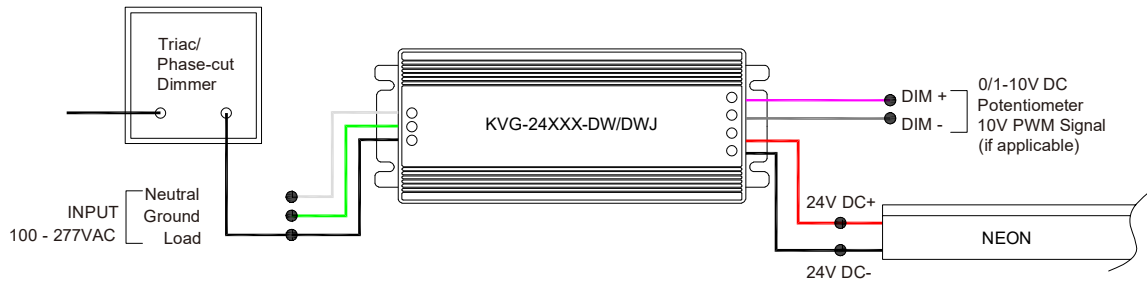
Phase cut/Triac-dimmable



4 in 1-dimmable (0-10V/1-10V/Potentiometer/10V PWM)



5 in 1-dimmable (Triac/0-10V/1-10V/Potentiometer/10V PWM)



LINIO NEON 1228X SV

Horizontal Bending · Static White

24V Voltage Drop & Maximum Wire Length Chart

Based on 24V voltage with a 3% voltage drop allowance. Indicates the maximum wire length from the power supply to the start of the run.

Total load	8AWG	10AWG	12AWG	14AWG	16AWG	18AWG	20AWG	22AWG
10W / 0.4A	1588ft (484.0m)	999ft (304.5m)	628ft (191.4m)	395ft (120.4m)	248ft (75.5m)	156ft (47.5m)	98ft (29.8m)	61ft (18.5m)
20W / 0.8A	794ft (242.0m)	499ft (152.1m)	314ft (95.7m)	197ft (60.0m)	124ft (37.8m)	78ft (23.7m)	49ft (14.9m)	30ft (9.1m)
30W / 1.3A	529ft (161.2m)	333ft (101.5m)	209ft (63.7m)	131ft (39.9m)	82ft (24.9m)	52ft (15.8m)	32ft (9.7m)	20ft (6.1m)
40W / 1.7A	397ft (121.0m)	249ft (75.9m)	157ft (47.8m)	98ft (29.8m)	62ft (18.9m)	39ft (11.8m)	24ft (7.3m)	15ft (4.5m)
50W / 2.1A	317ft (96.6m)	199ft (60.6m)	125ft (38.1m)	79ft (24.0m)	49ft (14.9m)	31ft (9.4m)	19ft (5.7m)	12ft (3.6m)
60W / 2.5A	264ft (80.4m)	166ft (50.6m)	104ft (31.7m)	65ft (19.8m)	41ft (12.5m)	26ft (7.9m)	16ft (4.8m)	10ft (3.0m)
70W / 2.9A	226ft (68.8m)	142ft (43.2m)	89ft (27.1m)	56ft (17.0m)	35ft (10.6m)	22ft (6.7m)	14ft (4.2m)	8ft (2.4m)
80W / 3.3A	198ft (60.3m)	124ft (37.8m)	78ft (23.7m)	49ft (14.9m)	31ft (9.4m)	19ft (5.7m)	12ft (3.6m)	7ft (2.1m)
90W / 3.8A	176ft (53.6m)	111ft (33.8m)	69ft (21.0m)	43ft (13.1m)	27ft (8.2m)	17ft (5.1m)	10ft (3.0m)	6ft (1.8m)
100W / 4.2A	158ft (48.1m)	99ft (30.1m)	62ft (18.9m)	39ft (11.8m)	24ft (7.3m)	15ft (4.5m)	9ft (2.7m)	6ft (1.8m)
110W / 4.6A	144ft (43.8m)	90ft (27.4m)	57ft (17.3m)	35ft (10.6m)	22ft (6.7m)	14ft (4.2m)	9ft (2.7m)	5ft (1.5m)
120W / 5.0A	132ft (40.2m)	83ft (25.3m)	52ft (15.8m)	32ft (9.7m)	20ft (6.1m)	13ft (3.9m)	8ft (2.4m)	5ft (1.5m)
130W / 5.4A	122ft (37.1m)	76ft (23.1m)	48ft (14.6m)	30ft (9.1m)	19ft (5.7m)	12ft (3.6m)	7ft (2.1m)	4ft (1.2m)
140W / 5.8A	113ft (34.4m)	71ft (21.6m)	44ft (13.4m)	28ft (8.5m)	17ft (5.1m)	11ft (3.3m)	7ft (2.1m)	4ft (1.2m)
150W / 6.3A	105ft (32.0m)	66ft (20.1m)	41ft (12.5m)	26ft (7.9m)	16ft (4.8m)	10ft (3.0m)	6ft (1.8m)	4ft (1.2m)
160W / 6.7A	99ft (30.1m)	62ft (18.9m)	39ft (11.8m)	24ft (7.3m)	15ft (4.5m)	9ft (2.7m)	6ft (1.8m)	3ft (0.9m)
170W / 7.1A	93ft (28.3m)	58ft (17.6m)	36ft (10.9m)	23ft (7.0m)	14ft (4.2m)	9ft (2.7m)	5ft (1.5m)	3ft (0.9m)
180W / 7.5A	88ft (26.8m)	55ft (16.7m)	34ft (10.3m)	22ft (6.7m)	13ft (3.9m)	8ft (2.4m)	5ft (1.5m)	3ft (0.9m)
190W / 7.9A	83ft (25.3m)	52ft (15.8m)	33ft (10.0m)	20ft (6.0m)	13ft (3.9m)	8ft (2.4m)	5ft (1.5m)	3ft (0.9m)
200W / 8.3A	79ft (24.0m)	49ft (14.9m)	31ft (9.4m)	19ft (5.7m)	12ft (3.6m)	7ft (2.1m)	4ft (1.2m)	3ft (0.9m)
210W / 8.8A	75ft (22.8m)	47ft (14.3m)	29ft (8.8m)	18ft (5.4m)	11ft (3.3m)	7ft (2.1m)	4ft (1.2m)	2ft (0.6m)
220W / 9.2A	72ft (21.9m)	45ft (13.7m)	28ft (8.5m)	18ft (5.4m)	11ft (3.3m)	7ft (2.1m)	4ft (1.2m)	2ft (0.6m)
230W / 9.6A	69ft (21.0m)	43ft (13.1m)	27ft (8.2m)	17ft (5.1m)	10ft (3.0m)	6ft (1.8m)	4ft (1.2m)	2ft (0.6m)
240W / 10.0A	66ft (20.1m)	41ft (12.5m)	26ft (7.9m)	16ft (4.8m)	10ft (3.0m)	6ft (1.8m)	4ft (1.2m)	2ft (0.6m)
250W / 10.4A	63ft (19.2m)	40ft (12.1m)	25ft (7.6m)	15ft (4.5m)	9ft (2.7m)	6ft (1.8m)	3ft (0.9m)	2ft (0.6m)