

### Features

- 3-sides emitting design offers smooth diffusion at direct view
- IP68 rated, ideal for outdoor uses, not for underwater project
- 5 years warranty

### Applications

Gardens, parks, hotels, facades, pathways, outdoor steps, etc.

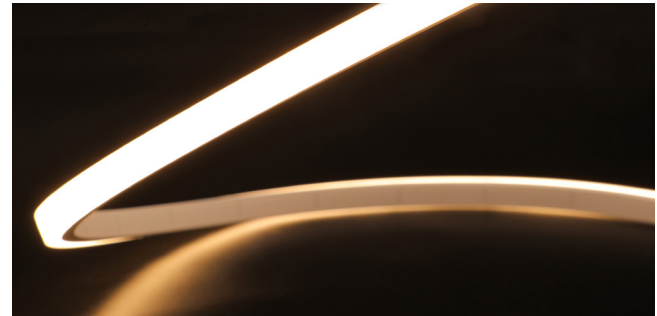
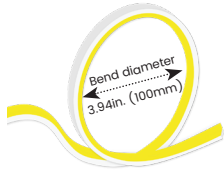
Date

Fixture type

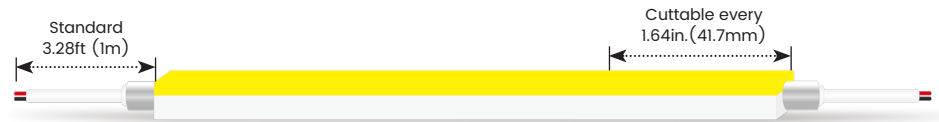
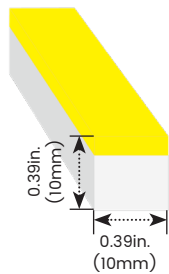
Project name

Project phase

### Bending Directions & Diameters



### Dimensions



### Order Code

### Assembly Builder

Model	Environment	Voltage	CCT	Power	End Cap	Left Feed Entry				
LN1010X3STV	W8-Wet (IP68)	24V-DC24V	22K-2200K	3.4-3.35W/ft	FT	Flush Translucent	F	Front	OW	Open wire 0.98ft(30cm)
			27K-2700K		FO	Flush Opaque	B	Bottom	MC	Male connector with 0.98ft(30cm) cable
			30K-3000K		S	Side	FC	Female connector with 0.98ft(30cm)cable		
			35K-3500K		C	Closed	NA	Only for Closed Feed Entry		
			40K-4000K							
53K-5300K										

### Assembly Builder

Right Feed Entry			Length	
F	Front	OW	Open wire 0.98ft(30cm)	<b>Max. nominal</b> 42.7ft (13m)
B	Bottom	MC	Male connector with 0.98ft(30cm) cable	<b>Increment</b> 1.64in. (41.7mm)
S	Side	FC	Female connector with 0.98ft(30cm)cable	
C	Closed	NA	Only for Closed Feed Entry	

### Mounting Order Code

Product Code
Please select on the Mounting Options page

\*We will list the nearest actual manufacturing length on the quotation, based on your requested length.

**Lumen Output (lm/ft)**

CCT	3.35W/ft
2200K	253
2700K	274
3000K	282
3500K	287
4000K	290
5300K	277

Max. Run for Class 2\* 23.9ft (7.3m)  
 Max. Run Supported Length 42.7ft (13m)

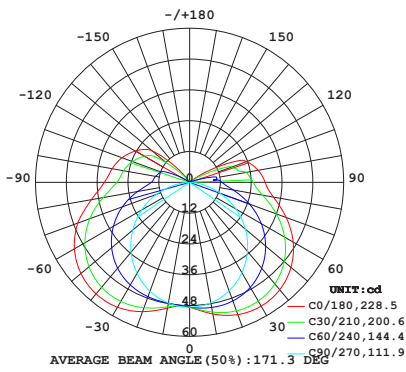
\*Typically installations in USA and Canada comply with Class 2 requirements

**Technical Details**

Efficacy	84.1lm/W @3000K 3.35W
CRI	Ra>90
Beam Angle	160°(3-sides emitting)
LED MacAdam	2 steps
Average Life (L80B10)	>52,000 hours
Storage Temperature	-40°C~ 65°C
Operating Temperature	-40°C~ 65°C

**Photometry**

LN1010X3STV-W8-24V-30K-3.4-FT-F-OW-F-OW  
 LINIO NEON 1010X 3S TV, Vertical Bend, 3000K, 3.35W/ft

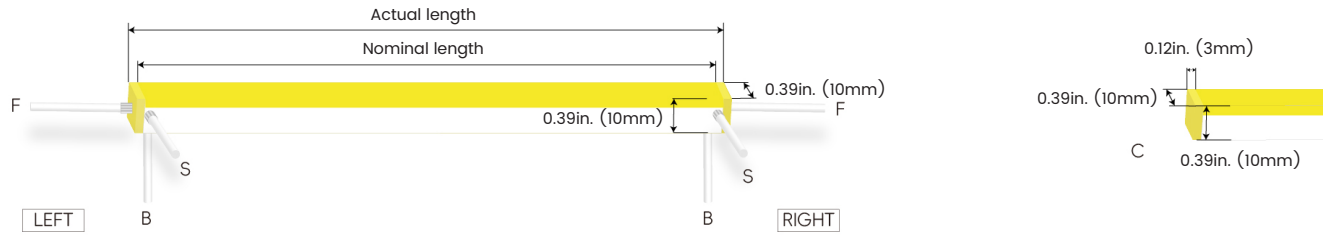


Zonal Lumen Summary

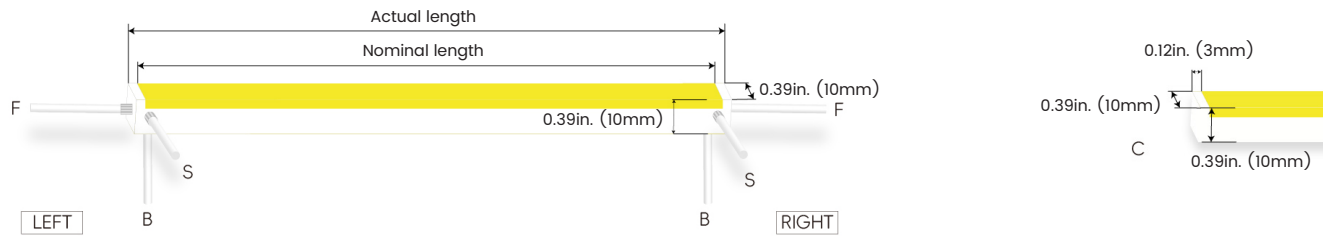
Zone	Lumen	% Fixture
0-30	41.89	14.80%
0-40	72.3	25.6%
0-60	143.5	50.8%
0-90	228.6	81.0%
0-180	282.3	100.0%

### Feed Entry / End Cap Options

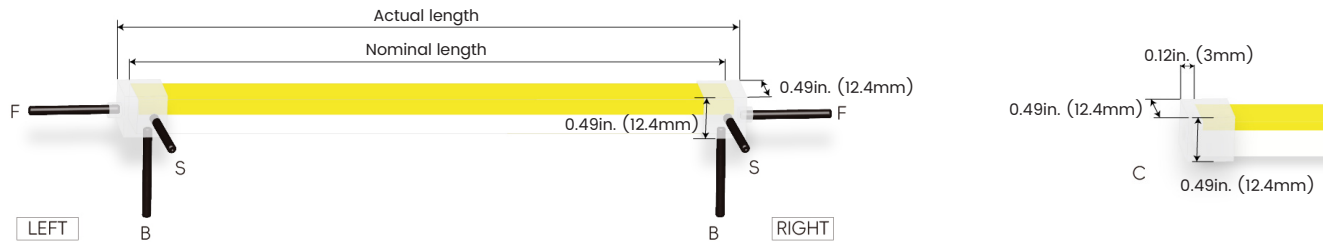
#### FT: Flush Translucent – IP68, factory-made only



#### FO: Flush Opaque – IP68, factory-made only



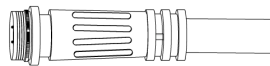
#### Silicone end cap – IP67, for field cuttable only



### Connector Wire Options



**OW:** Open wire, **Dry only**  
Standard 0.98ft (30cm), 20 AWG,  
wire length customizable

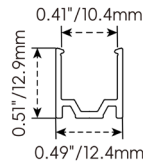


**MC:** Male connector, **Wet**  
Standard 0.98ft (30cm), 20 AWG



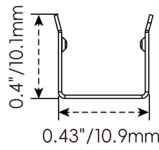
**FC:** Female connector, **Wet**  
Standard 0.98ft (30cm), 20 AWG

**Mounting Options**



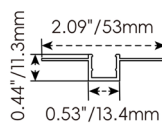
**NF1010-SC**

Name	Straight surface channel
Material	Aluminum
Standard Length	3.28ft (1M)



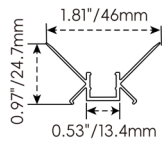
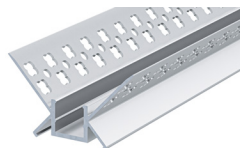
**NF1010-BC**

Name	Bendable surface channel
Material	Stainless Steel
Standard Length	3.28ft (1M)
Min. Bending Diameter	3.94in. (100mm)
*Not suitable for upside-down installation	



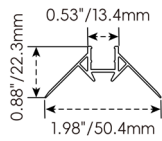
**NF1010-MC**

Name	Mud-in channel
Material	Aluminum
Standard Length	3.28ft (1M)



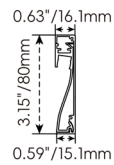
**NF1010-IC**

Name	Inside corner channel
Material	Aluminum
Standard Length	3.28ft (1M)



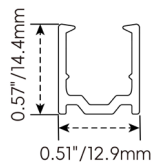
**NF1010-OC**

Name	Outside corner channel
Material	Aluminum
Standard Length	3.28ft (1M)



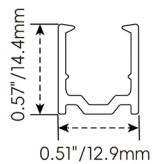
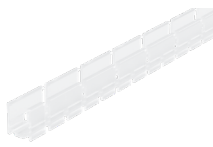
**NF1010-SBC**

Name	Skirting board channel
Material	Aluminum
Standard Length	3.28ft (1M)



**NF1010-PC**

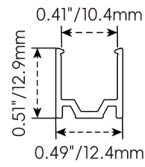
Name	PC channel
Material	PC
Standard Length	3.28ft (1M)



**NF1010-BPC**

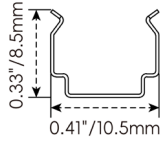
Name	Bendable PC channel
Material	PC
Standard Length	3.28ft (1M)

**Mounting Options**



**NF1010-CL**

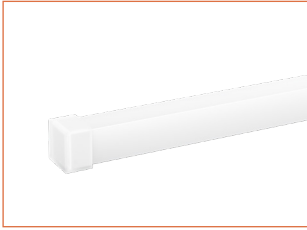
Name	Mounting clip
Material	Aluminum
Standard Length	25mm (0.98in. )



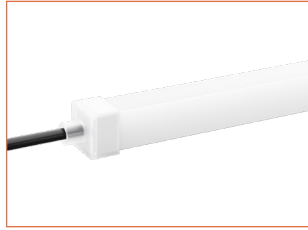
**NF1010-CLS**

Name	Mounting clip
Material	Stainless Steel
Standard Length	0.28in. (7mm)
*Not suitable for upside-down installation	

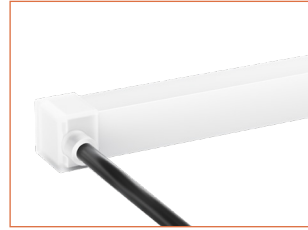
### Silicone End Caps (Optional, purchase for extra )



**NF1010-SEC-C**  
Silicone closed end cap



**NF1010-SEC-F-2P**  
Silicone end cap front entry with  
0.98ft(30cm) cable, 2 pin



**NF1010-SEC-S-2P**  
Silicone end cap side entry with  
0.98ft(30cm) cable, 2 pin



**NF1010-SEC-B-2P**  
Silicone end cap bottom entry with  
0.98ft(30cm) cable, 2 pin

### Additional Accessories (Optional, purchase for extra)



**MCW-2P-67**  
Male connector,  
0.98ft (30cm) white cable,  
2 pin, IP67, Wet, 20 AWG



**FCW-2P-67**  
Female connector,  
0.98ft (30cm) white cable,  
2 pin, IP67, Wet, 20 AWG



**MCB-2P-67**  
Male connector,  
0.98ft (30cm) black cable,  
2 pin, IP67, Wet, 20 AWG



**FCB-2P-67**  
Female connector,  
0.98ft (30cm) black cable,  
2 pin, IP67, Wet, 20 AWG

**Drivers**

**Non-dimmable**

Code	Max Load	Input	Output	Class 2	With Junction Box	Environment	Size (L x W x H)
KV-24030-ASW	30W	100-277VAC	24V	Yes	No	Dry/Damp	6.1 x 2.1 x 0.8in. (15.5 x 5.4 x 2cm)
KV-24060-ASW	60W	100-277VAC	24V	Yes	No	Dry/Damp	7 x 2.4 x 0.9in. (17.8 x 6.1 x 2.4cm)
KV-24096-ASW	96W	100-277VAC	24V	Yes	No	Dry/Damp/Wet	9.1 x 2.8 x 1.7in. (23 x 7 x 4.3cm)

**Phase cut/Triac-dimmable**

Code	Max Load	Input	Output	Class 2	With Junction Box	Environment	Size (L x W x H)
KVF-24030-TDW	30W	100-277VAC	24V	Yes	No	Dry/Damp	6.1 x 2.1 x 0.8in. (15.5 x 5.4 x 2cm)
KVF-24060-TDW	60W	100-277VAC	24V	Yes	No	Dry/Damp	7 x 2.4 x 0.9in. (17.8 x 6.1 x 2.4cm)
KVF-24096-TDW	96W	100-277VAC	24V	Yes	No	Dry/Damp/Wet	9.1 x 2.8 x 1.7in. (23 x 7 x 4.3cm)
KVF-24030-TDWJ	30W	100-277VAC	24V	Yes	Yes	Dry/Damp	6.5 x 3.6 x 1in. (16.5 x 9.2 x 2.6cm)
KVF-24060-TDWJ	60W	100-277VAC	24V	Yes	Yes	Dry/Damp	7.4 x 3.6 x 1in. (18.8 x 9.2 x 2.6cm)
KVF-24096-TDWJ	96W	100-277VAC	24V	Yes	Yes	Dry/Damp	8.7 x 3.7 x 1.6in. (22 x 9.3 x 4.1cm)
KVF-24192-TDWJ	192W (96Wx2)	100-277VAC	24V	Yes	Yes	Dry/Damp	10.9 x 4.3 x 1.8in. (27.8 x 11 x 4.5cm)
KVF-24288-TDWJ	288W (96Wx3)	100-277VAC	24V	Yes	Yes	Dry/Damp	11.9 x 4.3 x 1.8in. (30.1 x 11 x 4.5cm)
KVF-24384-TDWJ	384W (96Wx4)	100-277VAC	24V	Yes	Yes	Dry/Damp	12.7 x 5.5 x 1.9in. (32.3 x 14 x 4.8cm)

**4 in 1-dimmable (0-10V/1-10V/Potentiometer/10V PWM)**

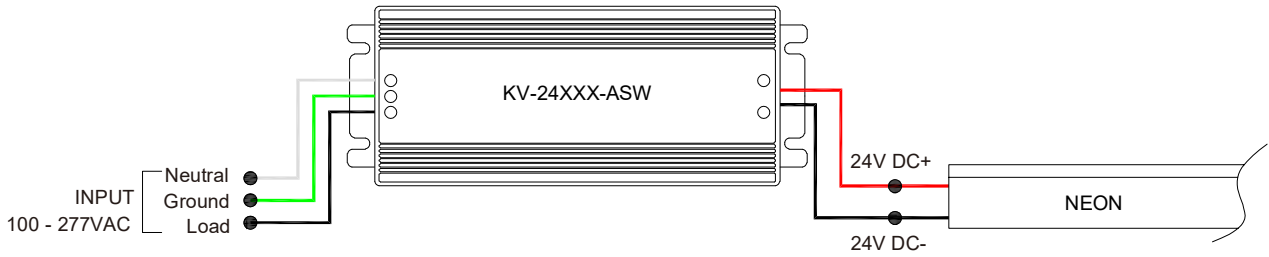
Code	Max Load	Input	Output	Class 2	With Junction Box	Environment	Size (L x W x H)
KVD-24030-DIM	30W	100-277VAC	24V	Yes	No	Dry/Damp	6.1 x 2.1 x 0.8in. (15.5 x 5.4 x 2cm)
KVD-24060-DIM	60W	100-277VAC	24V	Yes	No	Dry/Damp	7 x 2.4 x 0.9in. (17.8 x 6.1 x 2.4cm)
KVD-24096-DIM	96W	100-277VAC	24V	Yes	No	Dry/Damp/Wet	9.1 x 2.8 x 1.7in. (23 x 7 x 4.3cm)
KVD-24030-DIMJ	30W	100-277VAC	24V	Yes	Yes	Dry/Damp	6.5 x 3.6 x 1in. (16.5 x 9.2 x 2.6cm)
KVD-24060-DIMJ	60W	100-277VAC	24V	Yes	Yes	Dry/Damp	7.4 x 3.6 x 1in. (18.8 x 9.2 x 2.6cm)
KVD-24096-DIMJ	96W	100-277VAC	24V	Yes	Yes	Dry/Damp	8.7 x 3.7 x 1.6in. (22 x 9.3 x 4.1cm)
KVD-24192-DIMJ	192W (96Wx2)	100-277VAC	24V	Yes	Yes	Dry/Damp	10.9 x 4.3 x 1.8in. (27.8 x 11 x 4.5cm)
KVD-24288-DIMJ	288W (96Wx3)	100-277VAC	24V	Yes	Yes	Dry/Damp	11.9 x 4.3 x 1.8in. (30.1 x 11 x 4.5cm)
KVD-24384-DIMJ	384W (96Wx4)	100-277VAC	24V	Yes	Yes	Dry/Damp	12.7 x 5.5 x 1.9in. (32.3 x 14 x 4.8cm)

**5 in 1-dimmable (Triac/0-10V/1-10V/Potentiometer/10V PWM)**

Code	Max Load	Input	Output	Class 2	With Junction Box	Environment	Size (L x W x H)
KVG-24030-DW	30W	100-277VAC	24V	Yes	No	Dry/Damp	6.1 x 2.1 x 0.8in. (15.5 x 5.4 x 2cm)
KVG-24060-DW	60W	100-277VAC	24V	Yes	No	Dry/Damp	7 x 2.4 x 0.9in. (17.8 x 6.1 x 2.4cm)
KVG-24096-DW	96W	100-277VAC	24V	Yes	No	Dry/Damp/Wet	9.1 x 2.8 x 1.7in. (23 x 7 x 4.3cm)
KVG-24030-DWJ	30W	100-277VAC	24V	Yes	Yes	Dry/Damp	6.5 x 3.7 x 1.6in. (16.5 x 9.5 x 4cm)
KVG-24060-DWJ	60W	100-277VAC	24V	Yes	Yes	Dry/Damp	7.4 x 3.7 x 1.6in. (18.8 x 9.5 x 4cm)
KVG-24096-DWJ	96W	100-277VAC	24V	Yes	Yes	Dry/Damp	8.7 x 3.7 x 1.6in. (22 x 9.5 x 4cm)
KVG-C24192-DWJ	192W (96Wx2)	100-277VAC	24V	Yes	Yes	Dry/Damp	10.9 x 4.3 x 1.8in. (27.8 x 11 x 4.5cm)
KVG-C24288-DWJ	288W (96Wx3)	100-277VAC	24V	Yes	Yes	Dry/Damp	11.9 x 4.3 x 1.8in. (30.1 x 11 x 4.5cm)
KVG-C24384-DWJ	384W (96Wx4)	100-277VAC	24V	Yes	Yes	Dry/Damp	12.8 x 5.5 x 1.9in. (32.5 x 14 x 4.8cm)

**Wiring Diagram**

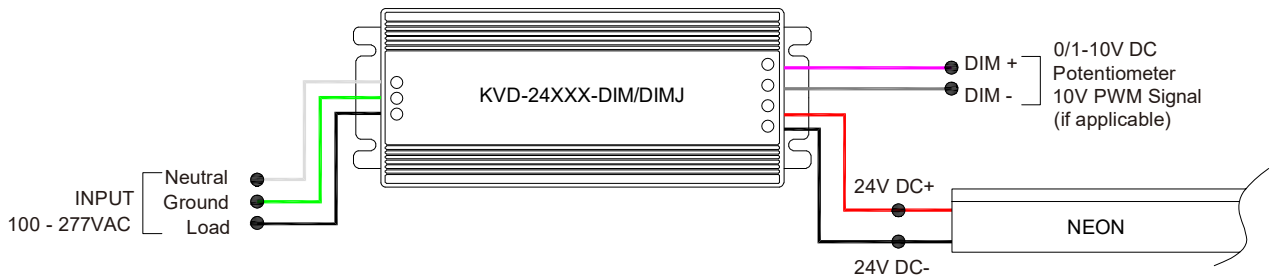
**Non-dimmable**



**Phase cut/Triac-dimmable**



**4 in 1-dimmable (0-10V/1-10V/Potentiometer/10V PWM)**



**5 in 1-dimmable (Triac/0-10V/1-10V/Potentiometer/10V PWM)**



**LINIO NEON 1010X 3S TV**

Vertical Bending · Static White

**24V Voltage Drop & Maximum Wire Length Chart**

Based on 24V voltage with a 3% voltage drop allowance. Indicates the maximum wire length from the power supply to the start of the run.

Total load	8AWG	10AWG	12AWG	14AWG	16AWG	18AWG	20AWG	22AWG
10W / 0.4A	1588ft (484.0m)	999ft (304.5m)	628ft (191.4m)	395ft (120.4m)	248ft (75.5m)	156ft (47.5m)	98ft (29.8m)	61ft (18.5m)
20W / 0.8A	794ft (242.0m)	499ft (152.1m)	314ft (95.7m)	197ft (60.0m)	124ft (37.8m)	78ft (23.7m)	49ft (14.9m)	30ft (9.1m)
30W / 1.3A	529ft (161.2m)	333ft (101.5m)	209ft (63.7m)	131ft (39.9m)	82ft (24.9m)	52ft (15.8m)	32ft (9.7m)	20ft (6.1m)
40W / 1.7A	397ft (121.0m)	249ft (75.9m)	157ft (47.8m)	98ft (29.8m)	62ft (18.9m)	39ft (11.8m)	24ft (7.3m)	15ft (4.5m)
50W / 2.1A	317ft (96.6m)	199ft (60.6m)	125ft (38.1m)	79ft (24.0m)	49ft (14.9m)	31ft (9.4m)	19ft (5.7m)	12ft (3.6m)
60W / 2.5A	264ft (80.4m)	166ft (50.6m)	104ft (31.7m)	65ft (19.8m)	41ft (12.5m)	26ft (7.9m)	16ft (4.8m)	10ft (3.0m)
70W / 2.9A	226ft (68.8m)	142ft (43.2m)	89ft (27.1m)	56ft (17.0m)	35ft (10.6m)	22ft (6.7m)	14ft (4.2m)	8ft (2.4m)
80W / 3.3A	198ft (60.3m)	124ft (37.8m)	78ft (23.7m)	49ft (14.9m)	31ft (9.4m)	19ft (5.7m)	12ft (3.6m)	7ft (2.1m)
90W / 3.8A	176ft (53.6m)	111ft (33.8m)	69ft (21.0m)	43ft (13.1m)	27ft (8.2m)	17ft (5.1m)	10ft (3.0m)	6ft (1.8m)
100W / 4.2A	158ft (48.1m)	99ft (30.1m)	62ft (18.9m)	39ft (11.8m)	24ft (7.3m)	15ft (4.5m)	9ft (2.7m)	6ft (1.8m)
110W / 4.6A	144ft (43.8m)	90ft (27.4m)	57ft (17.3m)	35ft (10.6m)	22ft (6.7m)	14ft (4.2m)	9ft (2.7m)	5ft (1.5m)
120W / 5.0A	132ft (40.2m)	83ft (25.3m)	52ft (15.8m)	32ft (9.7m)	20ft (6.1m)	13ft (3.9m)	8ft (2.4m)	5ft (1.5m)
130W / 5.4A	122ft (37.1m)	76ft (23.1m)	48ft (14.6m)	30ft (9.1m)	19ft (5.7m)	12ft (3.6m)	7ft (2.1m)	4ft (1.2m)
140W / 5.8A	113ft (34.4m)	71ft (21.6m)	44ft (13.4m)	28ft (8.5m)	17ft (5.1m)	11ft (3.3m)	7ft (2.1m)	4ft (1.2m)
150W / 6.3A	105ft (32.0m)	66ft (20.1m)	41ft (12.5m)	26ft (7.9m)	16ft (4.8m)	10ft (3.0m)	6ft (1.8m)	4ft (1.2m)
160W / 6.7A	99ft (30.1m)	62ft (18.9m)	39ft (11.8m)	24ft (7.3m)	15ft (4.5m)	9ft (2.7m)	6ft (1.8m)	3ft (0.9m)
170W / 7.1A	93ft (28.3m)	58ft (17.6m)	36ft (10.9m)	23ft (7.0m)	14ft (4.2m)	9ft (2.7m)	5ft (1.5m)	3ft (0.9m)
180W / 7.5A	88ft (26.8m)	55ft (16.7m)	34ft (10.3m)	22ft (6.7m)	13ft (3.9m)	8ft (2.4m)	5ft (1.5m)	3ft (0.9m)
190W / 7.9A	83ft (25.3m)	52ft (15.8m)	33ft (10.0m)	20ft (6.0m)	13ft (3.9m)	8ft (2.4m)	5ft (1.5m)	3ft (0.9m)
200W / 8.3A	79ft (24.0m)	49ft (14.9m)	31ft (9.4m)	19ft (5.7m)	12ft (3.6m)	7ft (2.1m)	4ft (1.2m)	3ft (0.9m)
210W / 8.8A	75ft (22.8m)	47ft (14.3m)	29ft (8.8m)	18ft (5.4m)	11ft (3.3m)	7ft (2.1m)	4ft (1.2m)	2ft (0.6m)
220W / 9.2A	72ft (21.9m)	45ft (13.7m)	28ft (8.5m)	18ft (5.4m)	11ft (3.3m)	7ft (2.1m)	4ft (1.2m)	2ft (0.6m)
230W / 9.6A	69ft (21.0m)	43ft (13.1m)	27ft (8.2m)	17ft (5.1m)	10ft (3.0m)	6ft (1.8m)	4ft (1.2m)	2ft (0.6m)
240W / 10.0A	66ft (20.1m)	41ft (12.5m)	26ft (7.9m)	16ft (4.8m)	10ft (3.0m)	6ft (1.8m)	4ft (1.2m)	2ft (0.6m)
250W / 10.4A	63ft (19.2m)	40ft (12.1m)	25ft (7.6m)	15ft (4.5m)	9ft (2.7m)	6ft (1.8m)	3ft (0.9m)	2ft (0.6m)